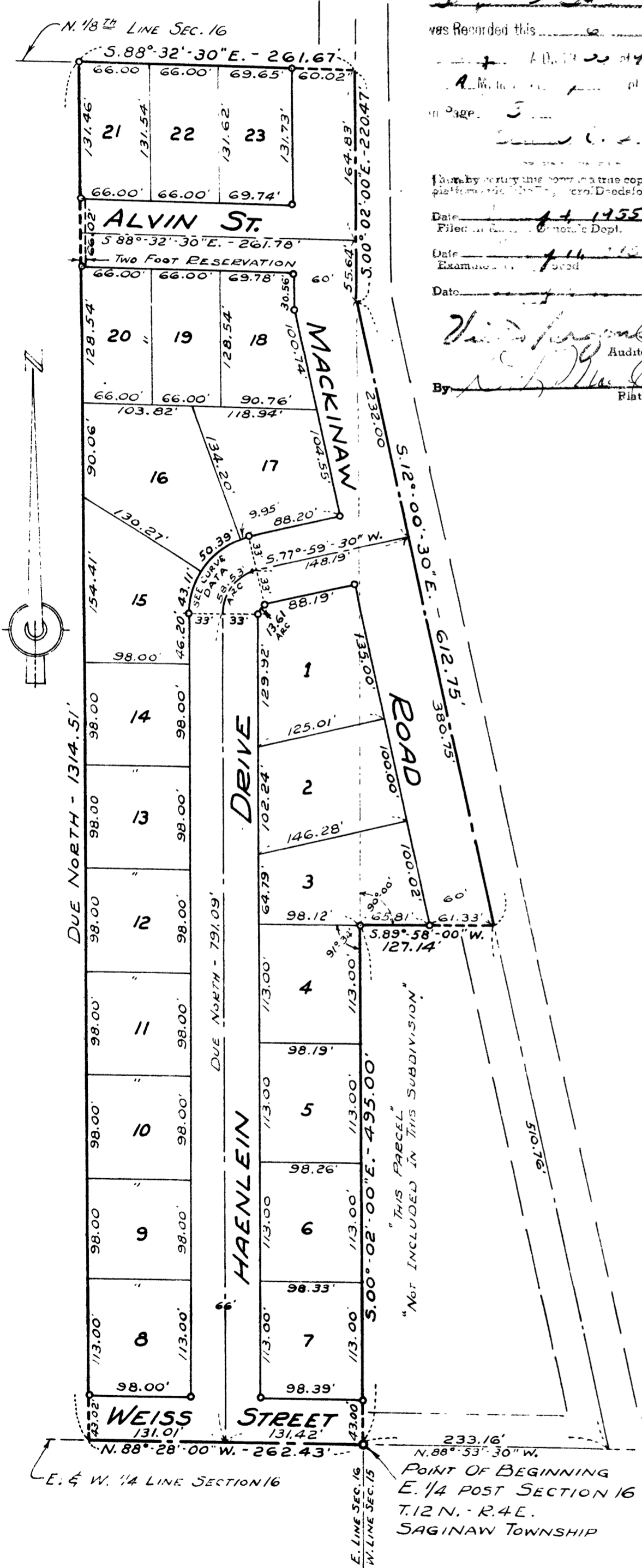


HAENLEIN SUBDIVISION

A PART OF S.W. 1/4 OF N.W. 1/4 - SECTION 15, T. 12 N. - R. 4 E.
 AND
 A PART OF S.E. 1/4 OF N.E. 1/4 - SECTION 16, T. 12 N. - R. 4 E.
 SAGINAW TOWNSHIP - SAGINAW COUNTY - MICHIGAN

SCALE: 1 INCH = 100 FEET
 0 50 100 200 300 400
 ALL DIMENSIONS ARE GIVEN IN FEET AND DECIMALS THEREOF



COPY
 Registered Office
 Saginaw County, Michigan
 Date of Recording: April 14, 1955
 Time of Recording: 4:00 O'clock
 Page: 3
 I hereby certify this is a true copy of map or plat as recorded in the Public Deeds for recording.
 Date: April 14, 1955
 Examined by: [Signature]
 Date: April 14, 1955
 Auditor General
 By: [Signature]
 First Engineer

THE SPICER ENGINEERING COMPANY
 SAGINAW, MICHIGAN
 1955

DEDICATION

KNOW ALL MEN BY THESE PRESENTS, That we, Louis W. Haenlein, a widower; Andrew J. Haenlein and Martha S. Haenlein, his wife; and Fred E. Haenlein and Lillian D. Haenlein, his wife, as proprietors, have caused the land embraced in the annexed plat to be surveyed laid out and platted, to be known as HAENLEIN SUBDIVISION, A Part of S.W. 1/4 of N.W. 1/4, Section 15, T. 12 N. - R. 4 E., and A Part of S.E. 1/4 of N.E. 1/4, Section 16, T. 12 N. - R. 4 E., Saginaw Township, Saginaw County, Michigan, and that the streets and drive as shown on said plat are hereby dedicated to the use of the public, Excepting however, from this dedication, land designated "Two Foot Reservation," such land to be dedicated automatically for street purposes at such time as street extensions adjacent thereto are dedicated in adjoining property.

Signed and Sealed in the Presence of
[Signature]
 Clifford H. Spicer
[Signature]
 Elmer Spaedt

[Signature] (L.S.)
 Louis W. Haenlein
[Signature] (L.S.)
 Andrew J. Haenlein
[Signature] (L.S.)
 Martha S. Haenlein
[Signature] (L.S.)
 Fred E. Haenlein
[Signature] (L.S.)
 Lillian D. Haenlein

STATE OF MICHIGAN) ss.
 County of Saginaw)

ACKNOWLEDGMENT

On this 14 day of April, 1955, before me, a Notary Public, in and for said County, personally came the above named Louis W. Haenlein, a widower; Andrew J. Haenlein and Martha S. Haenlein, his wife; and Fred E. Haenlein and Lillian D. Haenlein, his wife, known to me to be the persons who executed the above dedication and acknowledged the same to be their free act and deed.

My Commission Expires May 16, 1958

[Signature]
 Estelle M. Bryan
 Notary Public, Saginaw County, Michigan

DESCRIPTION

The land embraced in the annexed plat of HAENLEIN SUBDIVISION, A Part of S.W. 1/4 of N.W. 1/4, Section 15, T. 12 N. - R. 4 E., and A Part of S.E. 1/4 of N.E. 1/4, Section 16, T. 12 N. - R. 4 E., Saginaw Township, Saginaw County, Michigan, is described as follows: Commencing at the East 1/4 post of said Section 16; thence N. 88°-28'-00"W., on the East and West 1/4 line of said Section, 262.43 feet; thence Due North 1314.51 feet to the North 1/8th line of Section 16; thence S. 88°-32'-30"E., on said 1/8th line 261.67 feet to the East line of said Section; thence S. 00°-02'-00"E., on said Section line 220.17 feet; thence S. 12°-00'-30"E., on the centerline of Mackinaw Road 612.75 feet; thence S. 89°-58'-00"W., 127.14 feet to the West line of said Section 15; thence S. 00°-02'-00"E., on said Section line 495.00 feet to the point of beginning.

SURVEYOR'S CERTIFICATE

I hereby certify that the plat hereon delineated is a correct one and that permanent metal monuments consisting of bars not less than one-half inch in diameter and 36 inches in length, or shorter bars of not less than one-half inch in diameter lapped over each other at least 6 inches with an over-all length of not less than 36 inches, encased in a concrete cylinder at least 4 inches in diameter and 36 inches in depth have been placed at points marked thus o as thereon shown at all angles in the boundaries of the land platted, at all intersections of streets, at points of curvature and points of tangency in street lines, and at the intersections of streets with the boundaries of the plat as shown on said plat.

[Signature]
 Clifford H. Spicer - Registered Land Surveyor

COUNTY TREASURER'S CERTIFICATE RELATING TO TAXES
 (Sec. 135, Act 206, 1893 as amended - Sec. 4134, C. L. 1915.)
 Office of County Treasurer, Saginaw County

I hereby certify, that there are no tax liens or titles held by the State on the land described hereon, and that there are no tax liens or titles held by individuals on said lands, for the five years preceding the 14th day of March, 1955, and that the taxes for said period of five years are all paid, as shown by the records of this office.

This certificate does not apply to taxes, if any, now in process of collection by township, city or village collecting officers.

[Signature]
 Carl O. Little - Treasurer

CERTIFICATE OF APPROVAL BY CITY PLANNING COMMISSION

This plat was approved by the City Planning Commission of the City of Saginaw, Michigan, at a meeting held on the 25th day of January, 1955

[Signature]
 Russel O. Koenig - Director

CERTIFICATE OF APPROVAL BY BOARD OF COUNTY ROAD COMMISSIONERS

This plat has been examined and was approved on the 21st day of FEBRUARY, 1955 by the Saginaw County Board of Road Commissioners.

The Board of Road Commissioners of Saginaw County, Michigan, assumes no responsibility for the improvement or maintenance of the streets and roads shown on this plat until such time as they have been graded and drained with the necessary drainage structures installed and a gravel, slag, or cinder surface having a compacted thickness of at least 6 inches and a width of at least 18 feet has been applied and approved by this board.

[Signature]
 Albert M. Wille - Chairman

[Signature] - Member
[Signature] - Member

CERTIFICATE OF MUNICIPAL APPROVAL

This plat was approved by the Township Board of the Township of Saginaw at a meeting held on the 1st day of March, 1955

[Signature]
 Walter Dietzel - Clerk

CERTIFICATE OF APPROVAL BY THE COUNTY PLAT BOARD

This plat was approved by the County Plat Board of Saginaw County, Michigan, this 29th day of April, 1955.

[Signature]
 Clara P. Turck, Register of Deeds - Chairman

[Signature] - Auditor
[Signature] - Auditor

[Signature] - Auditor
 William A. Case - Auditor