

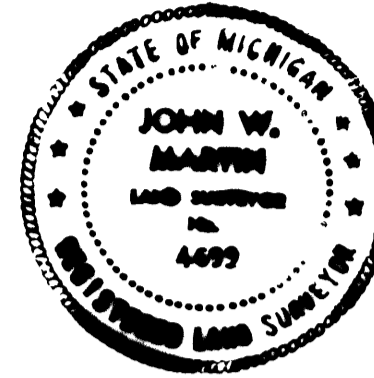
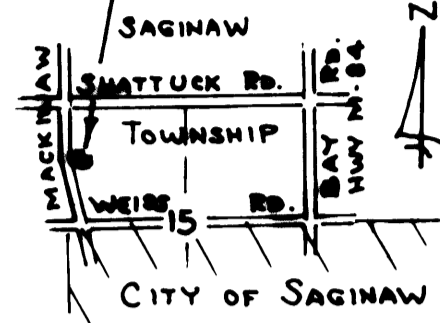
# HARVEST ACRES

PART OF THE NORTHWEST 1/4 OF SECTION 15, T.12N.-R.4E.  
SAGINAW TOWNSHIP, SAGINAW COUNTY, MICHIGAN

SHATTUCK ROAD

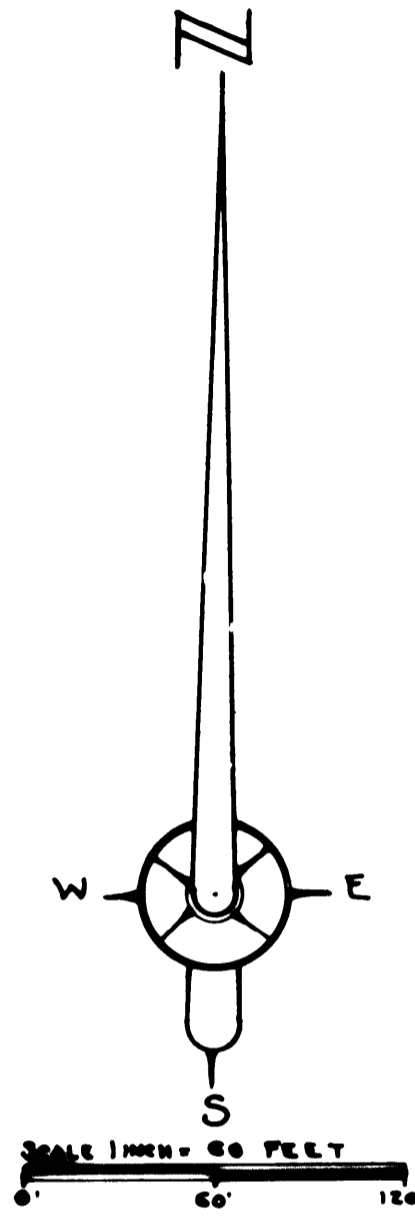
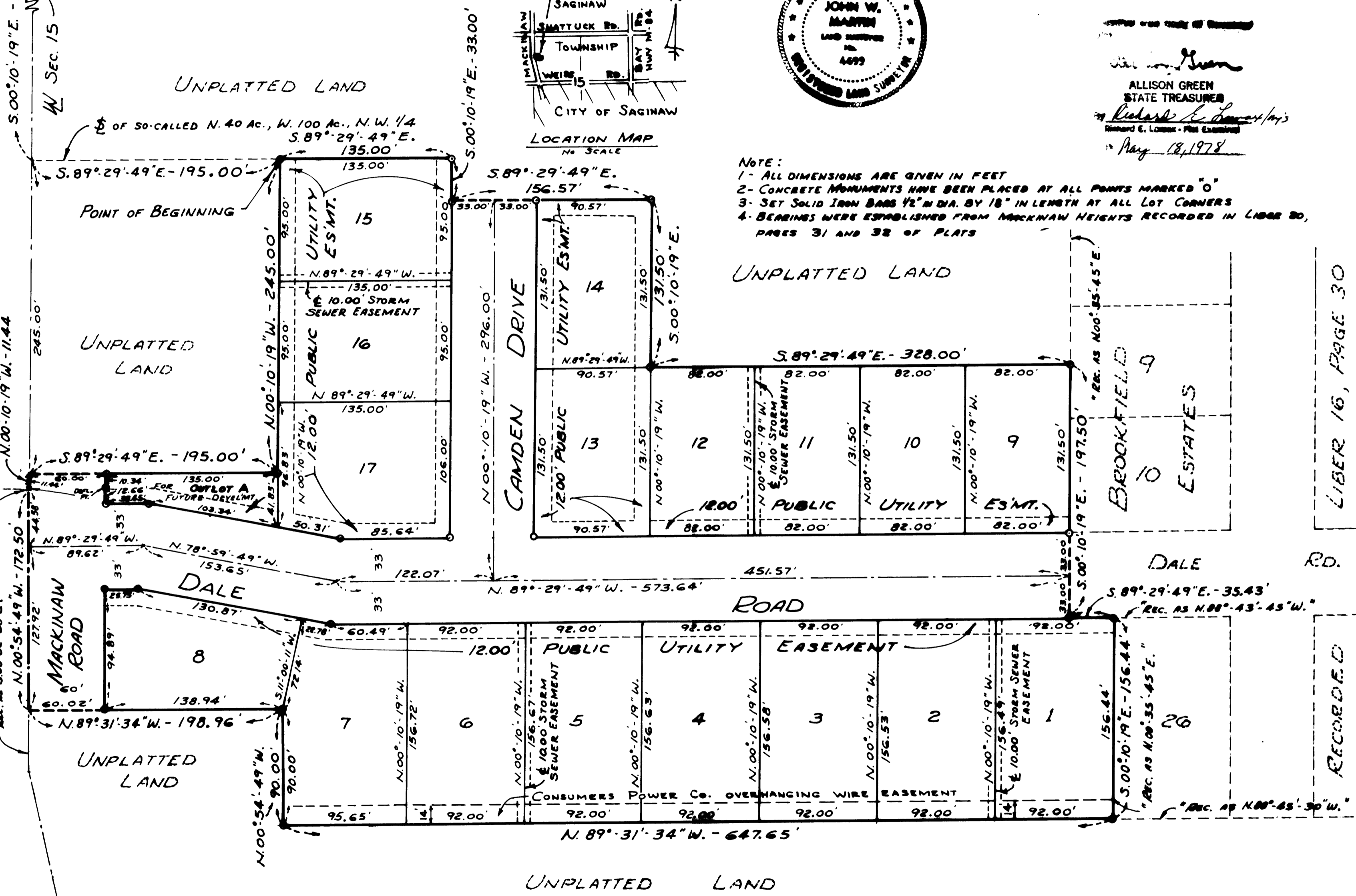
N $\frac{1}{4}$  SECTION 15  
N.W. COR. SEC. 15, T.12N.-R.4E.  
SAGINAW TOWNSHIP  
SAGINAW CO., MICHIGAN

HARVEST ACRES



ALLISON GREEN  
STATE TREASURER  
May 18, 1978

- NOTE:
- 1- ALL DIMENSIONS ARE GIVEN IN FEET
  - 2- CONCRETE MONUMENTS HAVE BEEN PLACED AT ALL POINTS MARKED 'O'
  - 3- SET SOLID IRON BARS 1/2" DIA. BY 18" IN LENGTH AT ALL LOT CORNERS
  - 4- BEARINGS WERE ESTABLISHED FROM MACKINAW HEIGHTS RECORDED IN LIBER 20, PAGES 31 AND 32 OF PLATS



HAENLEIN  
SUBDIVISION  
RECORDED LIBER 9, PAGE 3

LIBER 16, PAGE 30

RECORDED