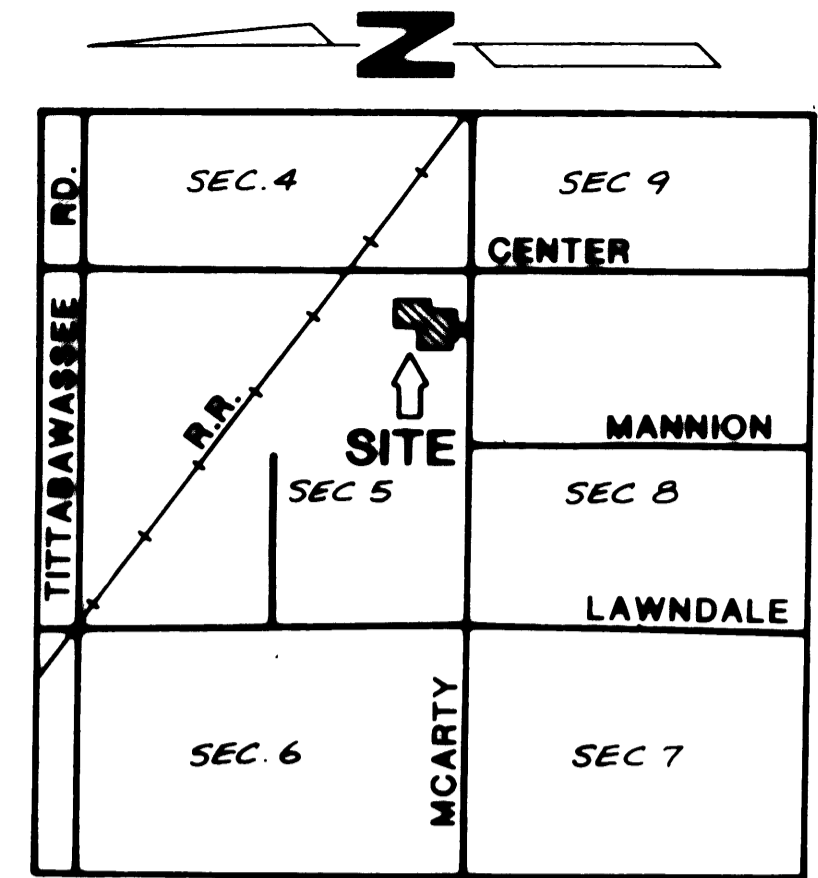
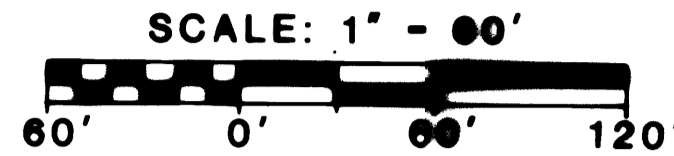


HARVEST VIEW FARMS

A PART OF THE SOUTHEAST 1/4 OF THE SOUTHEAST 1/4 OF SECTION 5, T12N., -R4E., SAGINAW TOWNSHIP, SAGINAW COUNTY, MICHIGAN



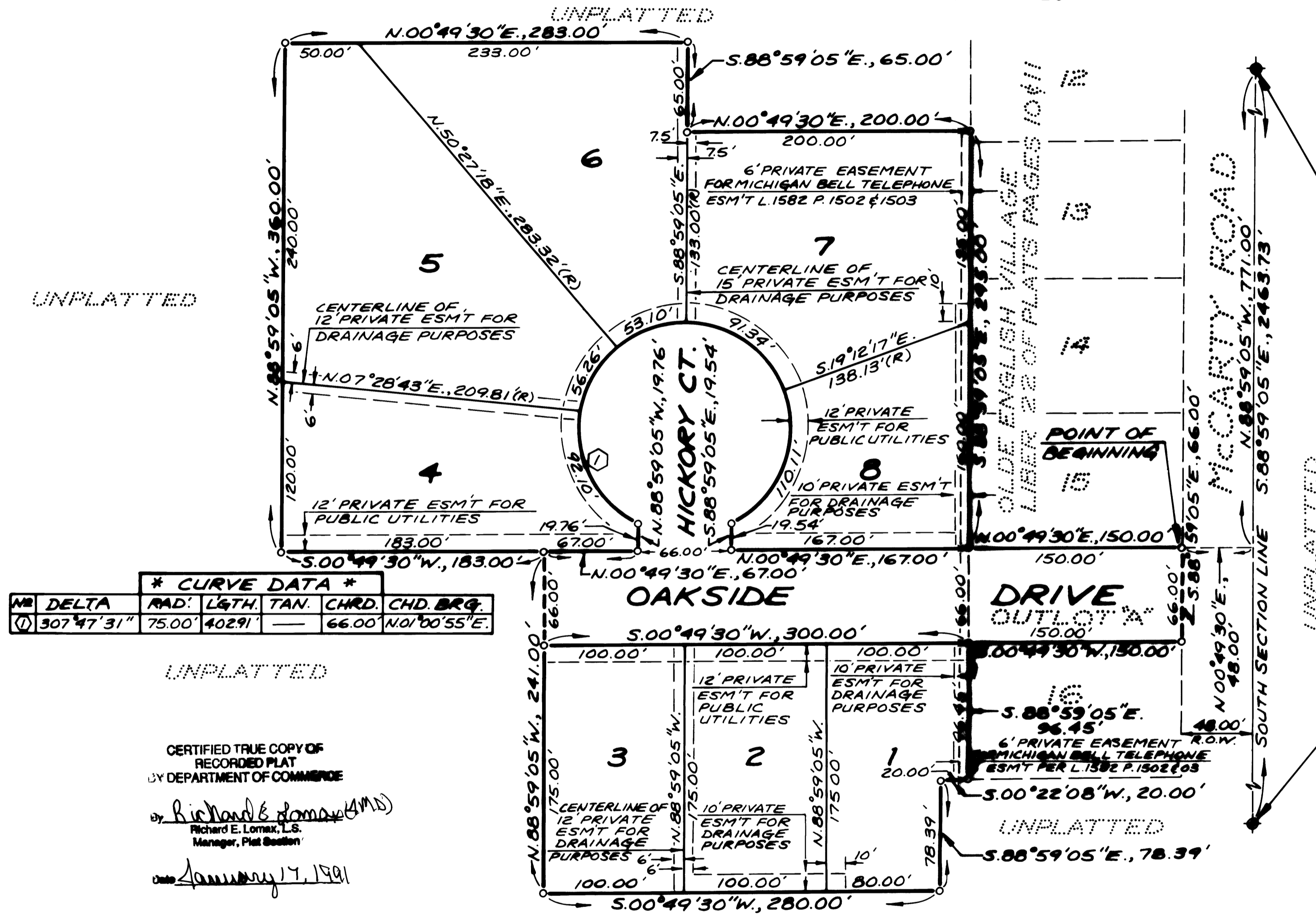
LOCATION MAP

SOUTHEAST CORNER SECTION 5
T.12N., R.4E., SAGINAW TWP.,
SAGINAW COUNTY, MICHIGAN
CORNER WITNESSES RECORDED IN LIBER 2 PAGE 6

LEGEND

1. ALL DIMENSIONS ARE IN FEET.
2. ALL CURVE DIMENSIONS ARE ARC LENGTHS.
3. CONC. MONUMENTS, 1/2" IRON BARS 36" LONG ENCASED IN 4" DIA. CONC. HAVE BEEN SET AT ALL POINTS MARKED THIS: SET
4. ALL LOT CORNERS HAVE BEEN MARKED WITH 3/4" IRON PIPES 18" IN LENGTH WITH YELLOW CAPS MARKED THIS: LEDY ENG. R.L.S. 21575
5. (R) - INDICATES LINES ARE RADIAL.
6. BASIS OF BEARING IS REFERENCED TO THE RECORDED PLAT OF "OLDE ENGLISH VILLAGE" AS RECORDED IN LIBER 22 PAGE 10 OF PLATS OF SAGINAW COUNTY RECORDS.

SOUTH 1/4 CORNER SECTION 5
T.12N., R.4E., SAGINAW TWP.,
SAGINAW COUNTY, MICHIGAN
CORNER WITNESSES RECORDED IN LIBER 1 PAGE 49



* CURVE DATA *					
NO.	DELTA	RAD.	LGTH.	TAN. CHRD.	CHD. BRG.
1	307°47'31"	75.00'	402.91'	—	66.00' N.01°00'55"E.

CERTIFIED TRUE COPY OF
RECORDED PLAT
BY DEPARTMENT OF COMMERCE

By Richard E. Lomax (M.D.)
Richard E. Lomax, L.S.
Manager, Plat Section
Date January 7, 1991



280 SOUTH MAIN ST. • FREELAND, MI 48623
PH (517) 695-2593/FAX (517) 695-2150

Duane F. Ledy
Duane F. Ledy, R.L.S. 21626



RECORDING CERTIFICATE

STATE OF MICHIGAN)
SAGINAW COUNTY)

THIS PLAT WAS RECEIVED FOR RECORD ON THE 28 DAY OF Jan, 19 90 AT 7:00 P.M. AND RECORDED IN LIBER 24 OF PLATS ON PAGE 27, 28 & 29.

Michael M. Dodak
MICHAEL M. DODAK
REGISTER OF DEEDS