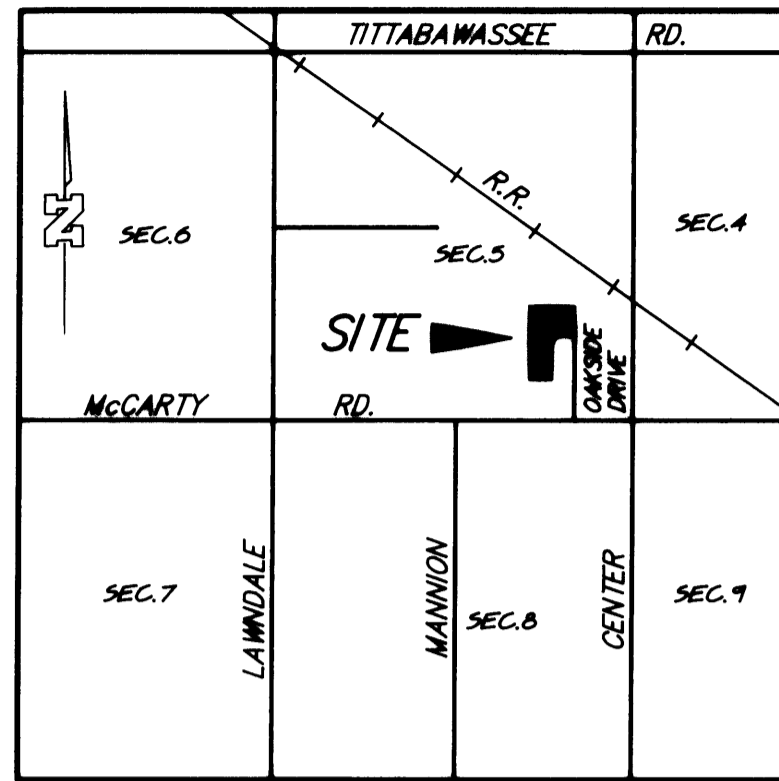


# HARVEST VIEW FARMS NO.2

A PART OF THE SOUTHEAST 1/4 OF THE SOUTHEAST 1/4 OF SECTION 5, T.12 N, R.4 E, SAGINAW TOWNSHIP, SAGINAW COUNTY, MICHIGAN



**LOCATION MAP**  
N.T.S.

**LEGEND**

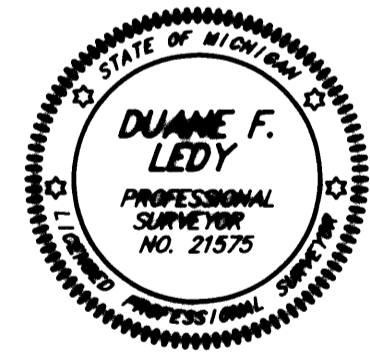
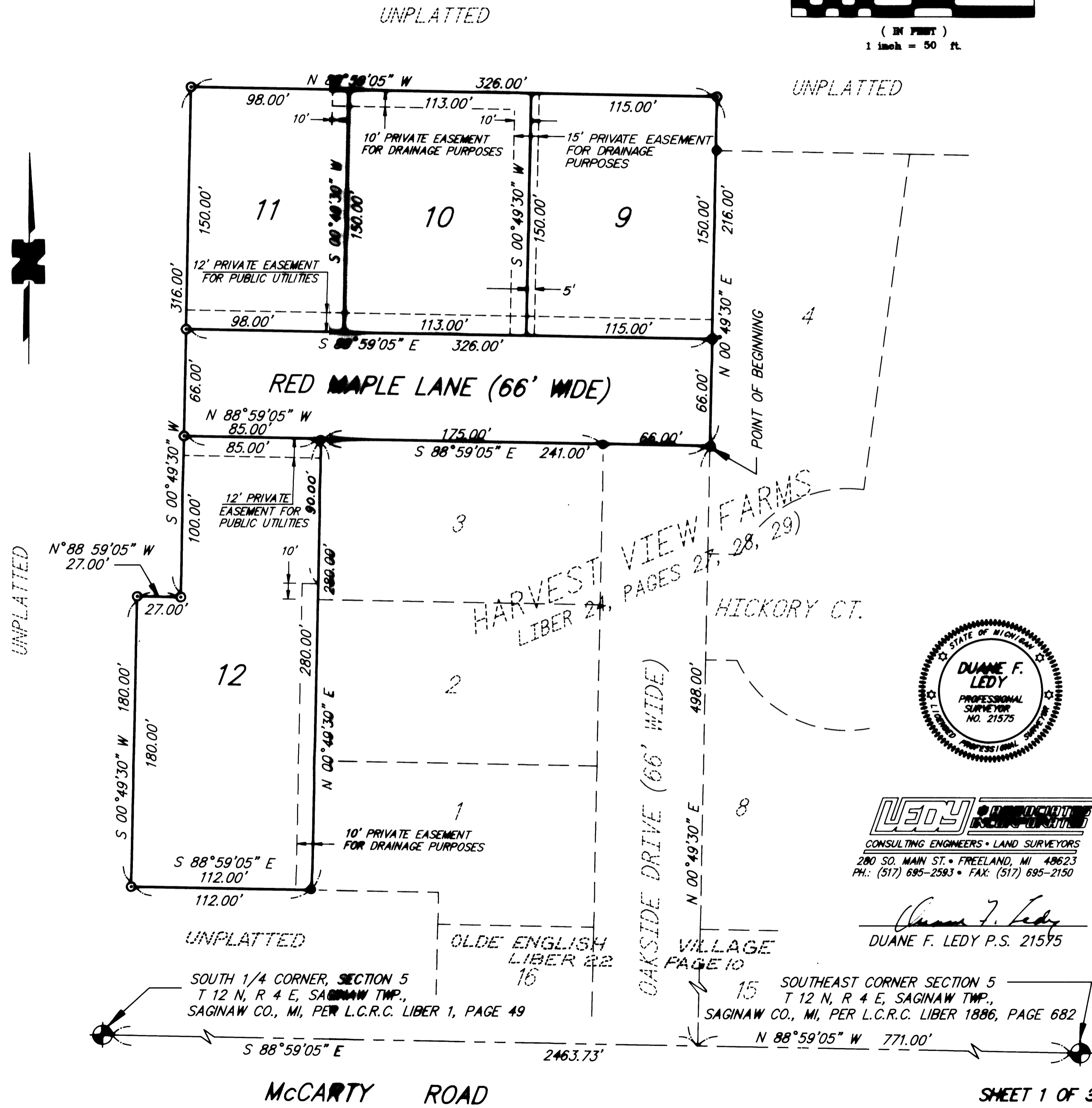
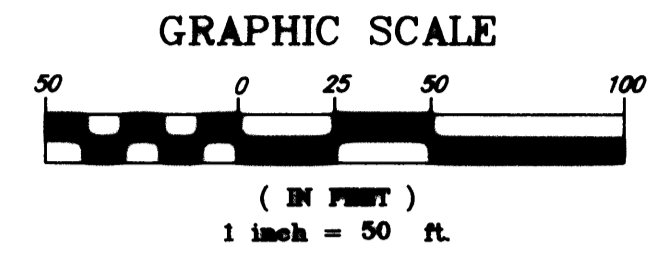
1. ALL DIMENSIONS ARE IN FEET.
2. CONCRETE MONUMENTS, 1/2" IRON BARS 36" LONG ENCASED IN 4" DIA. CONCRETE HAVE BEEN SET AT ALL POINTS MARKED THUS: ⊙ OR "FOUND" MARKED THUS: ●
3. ALL LOT CORNERS HAVE BEEN MARKED WITH 1/2" IRON BARS 18" IN LENGTH.
4. BEARINGS AS SHOWN ARE REFERENCED TO THE RECORDED PLAT OF "HARVEST VIEW FARMS" LIBER 24, PAGES 27, 28 & 29.

**RECORDING CERTIFICATE**

STATE OF MICHIGAN }  
SAGINAW COUNTY } SS  
THIS PLAT WAS RECEIVED FOR RECORD ON THE 21<sup>ST</sup> DAY OF May, 1995 AT 2:20 P.M., AND RECORDED IN LIBER 26 OF PLATS ON PAGES 33, 34 AND 35.

*Mildred M. Dodak*  
MILDRED M. DODAK  
REGISTER OF DEEDS

CERTIFIED TRUE COPY OF RECORDED PLAT BY DEPARTMENT OF COMMERCE  
By *Maynard R. Dyer*  
Maynard R. Dyer, P.S.  
Manager  
Subdivision Control Unit  
Date 5/8/95



**LEDY ASSOCIATES**  
CONSULTING ENGINEERS • LAND SURVEYORS  
280 SO. MAIN ST. • FREELAND, MI 49623  
PH.: (517) 695-2593 • FAX: (517) 695-2150

*Duane F. Ledy*  
DUANE F. LEDY P.S. 21575

SOUTH 1/4 CORNER, SECTION 5 T 12 N, R 4 E, SAGINAW TWP., SAGINAW CO., MI, PER L.C.R.C. LIBER 1, PAGE 49  
SOUTHEAST CORNER SECTION 5 T 12 N, R 4 E, SAGINAW TWP., SAGINAW CO., MI, PER L.C.R.C. LIBER 1886, PAGE 682