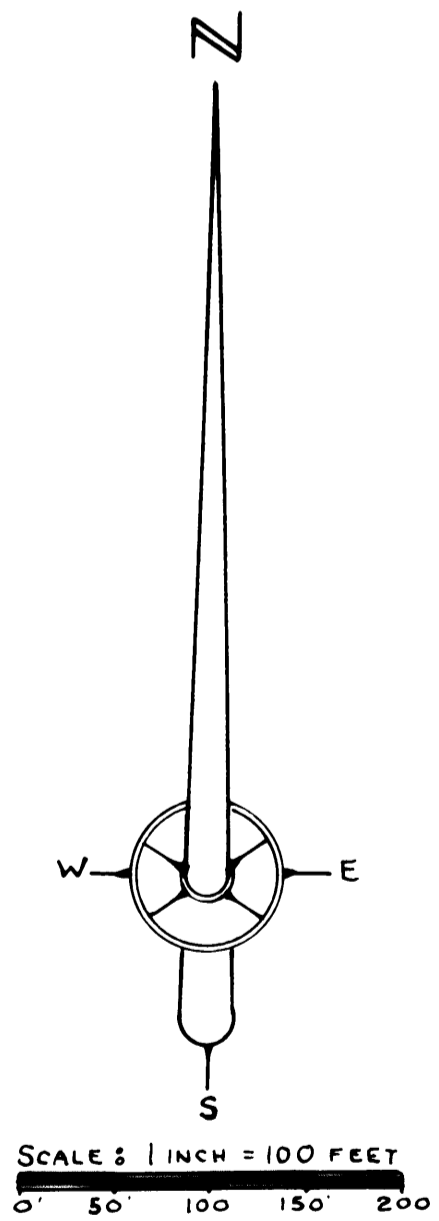
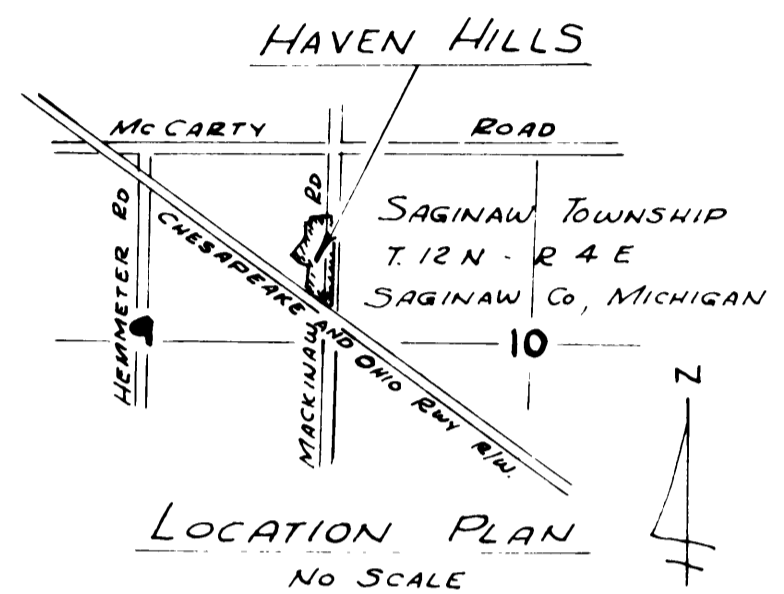
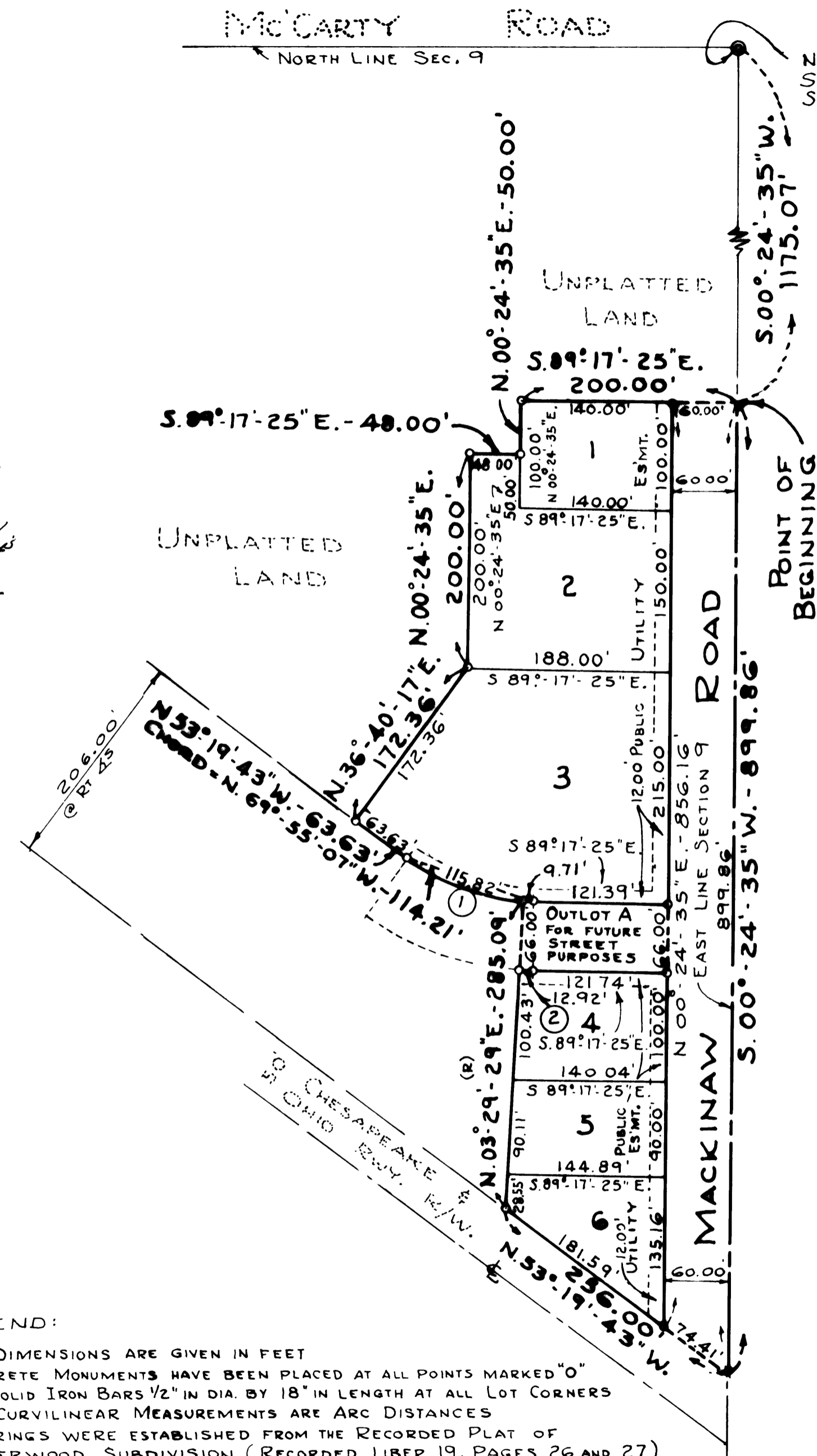


HAVEN HILLS

PART OF THE NORTHEAST 1/4 OF SECTION 9, T. 12 N. - R. 4 E.
SAGINAW TOWNSHIP, SAGINAW COUNTY, MICHIGAN

COPY OF
 RECORDED PLAT
Loren E. Monroe
 LOREN E. MONROE
 STATE TREASURER
 By *Richard E. Lomax*
 Richard E. Lomax, Plat Examiner
 Date April 4, 1979



LEGEND:
 1- ALL DIMENSIONS ARE GIVEN IN FEET
 2- CONCRETE MONUMENTS HAVE BEEN PLACED AT ALL POINTS MARKED "O"
 3- SET SOLID IRON BARS 1/2" IN DIA. BY 18" IN LENGTH AT ALL LOT CORNERS
 4- ALL CURVILINEAR MEASUREMENTS ARE ARC DISTANCES
 5- BEARINGS WERE ESTABLISHED FROM THE RECORDED PLAT OF SILVERWOOD SUBDIVISION (RECORDED LIBER 19, PAGES 26 AND 27)

CURVE DATA						
No.	DELTA ANGLE	RADIUS	ARC	CHORD	CHD BEARING	TANGENT
1	35°57'42"	200.00'	125.53'	123.48'	N 71°-18'-34" W.	64.91'
2	02°-46'-54"	266.00'	12.92'	12.91'	S. 87°-53'-58" E.	6.46'

