

CERTIFIED TRUE COPY OF
RECORDED PLAT
BY DEPARTMENT OF COMMERCIAL

Richard E. Lomax
Richard E. Lomax, L.S.
Manager, Plat Section

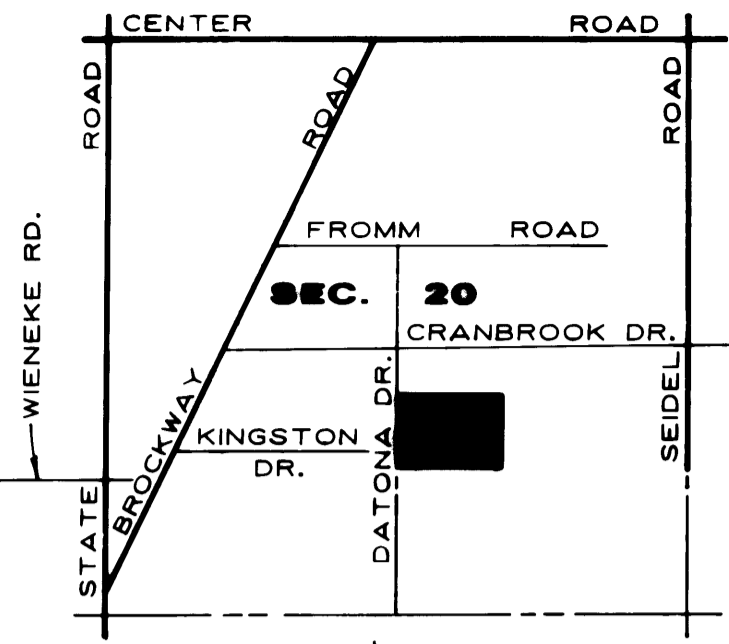
Date *July 28, 1992*

HEATHERWOOD

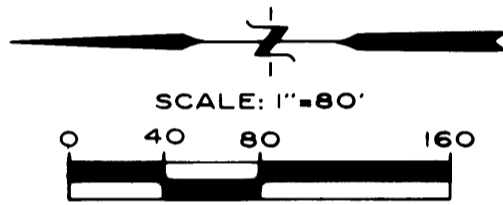
PART OF THE W. 1/2 OF THE E. 1/2 OF THE SW 1/4 OF SECTION 20,
T12N-R4E, SAGINAW TOWNSHIP, SAGINAW COUNTY, MICHIGAN

CURVE TABLE

No.	Radius	Δ Angle	Arc	Chord	Bearing
1	86.00'	89° 46' 48"	134.76'	121.39'	N. 44° 48' 51" W.
2	86.00'	90° 13' 12"	135.42'	121.86'	N. 45° 11' 09" E.
3	20.00'	90° 13' 12"	31.49'	28.34'	N. 45° 11' 09" E.
4	20.00'	89° 46' 48"	31.34'	28.23'	N. 44° 48' 51" W.

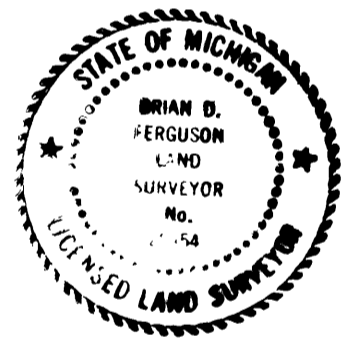


VICINITY MAP
NO SCALE



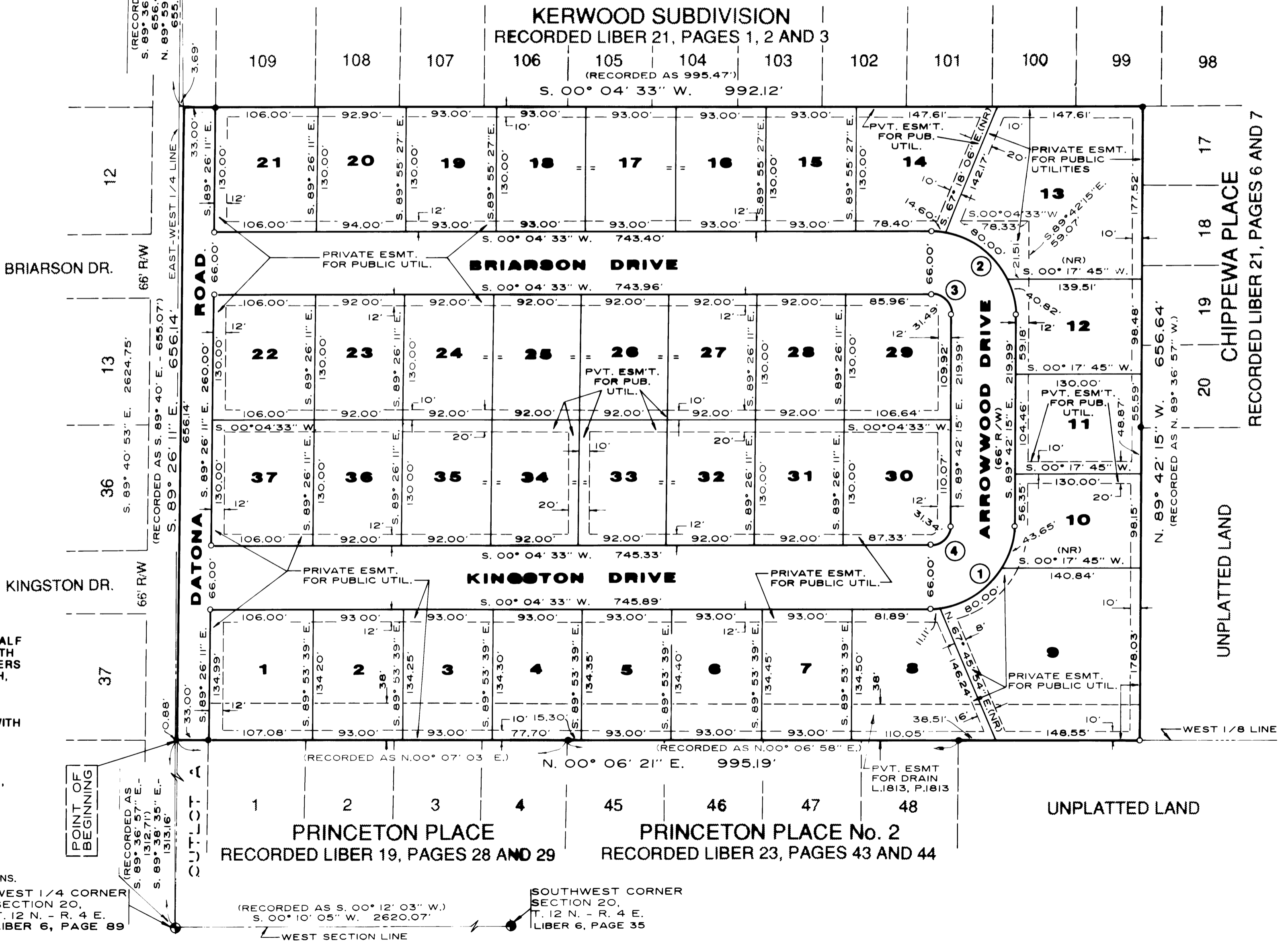
SCALE: 1"=80'

CENTER OF SECTION 20
T. 12 N. - R. 4 E.
LIBER 6, PAGE 89



Brian D. Ferguson
Brian D. Ferguson
L.L.S. No. 26454

ARROWWOOD SUBDIVISION
RECORDED LIBER 11, PAGE 05



LEGEND

- ALL DIMENSIONS ARE GIVEN IN FEET.
- MONUMENTS, CONSISTING OF IRON RODS ONE HALF INCH IN DIAMETER AND 36 INCHES IN LENGTH, WITH CAP NO. 26454, ENCASED IN CONCRETE CYLINDERS 4 INCHES IN DIAMETER AND 36 INCHES IN LENGTH, HAVE BEEN PLACED AT ALL POINTS SHOWN BY SYMBOL "O"
- SET 1/2 INCH IRON ROD, 18 INCHES IN LENGTH, WITH CAP NO. 26454, AT ALL PROPERTY CORNERS, EXCEPT AS NOTED.
- BEARINGS WERE DERIVED FROM "KERWOOD SUBDIVISION", RECORDED IN LIBER 21 OF PLATS, PAGES 1, 2 AND 3.
- "●" INDICATES FOUND MONUMENT.
- (R) DENOTES A RADIAL LINE
- (NR) DENOTES A NON-RADIAL LINE.
- ALL CURVILINEAR MEASUREMENTS ARE ARC DIMENSIONS.

WEST 1/4 CORNER SECTION 20,
T. 12 N. - R. 4 E.
LIBER 6, PAGE 89

(RECORDED AS S. 00° 10' 05" W. 2620.07')

SOUTHWEST CORNER SECTION 20,
T. 12 N. - R. 4 E.
LIBER 6, PAGE 35