

For Resolution See Liber 1653 - Page 1569  
 For Restrictions for Golfside, Hill's Replat and Schukwitz abn. See Liber 1653 - Page 1569  
 For Subdiv. & Petition See Liber 1653 - Page 2058

Liber 5 Page 3

All dimensions in feet and decimals there-of.

KNOW ALL MEN BY THESE PRESENTS, That we GOLF SIDE CORPORATION, a Michigan corporation by GEORGE H. HANNUM President, and FRANK F. SOMMERS, Secretary as proprietor, have caused the land embraced in the annexed plat to be surveyed, laid out and platted to be known as "HILL'S REPLAT OF LOTS 11 TO 24 INC, 57 TO 65 INC, AND 87 TO 112 INC. OF GOLF SIDE," SAGINAW TOWNSHIP, SAGINAW COUNTY, MICHIGAN and that the streets and alleys as shown on said plat are hereby dedicated to the use of the public.

Signed and Sealed in Presence of  
 Jesse M. Kenny, Notary Public, Saginaw County

STATE OF MICHIGAN }  
 COUNTY OF SAGINAW } SS

On this 19 day of November, A.D. 1926, before me JESSIE M. KENNY, a Notary Public in and for said county appeared GEORGE H. HANNUM and FRANK F. SOMMERS to me personally known, who being each by me duly sworn did say that they are the President and Secretary respectively of the GOLF SIDE CORPORATION, a Michigan corporation, and that the seal affixed to said instrument is the corporate seal of said corporation and that said instrument was signed and sealed in behalf of said corporation by authority of its Board of Directors and the said GEORGE H. HANNUM, President and FRANK F. SOMMERS, Secretary acknowledge said instrument to be the free act and deed of said corporation.

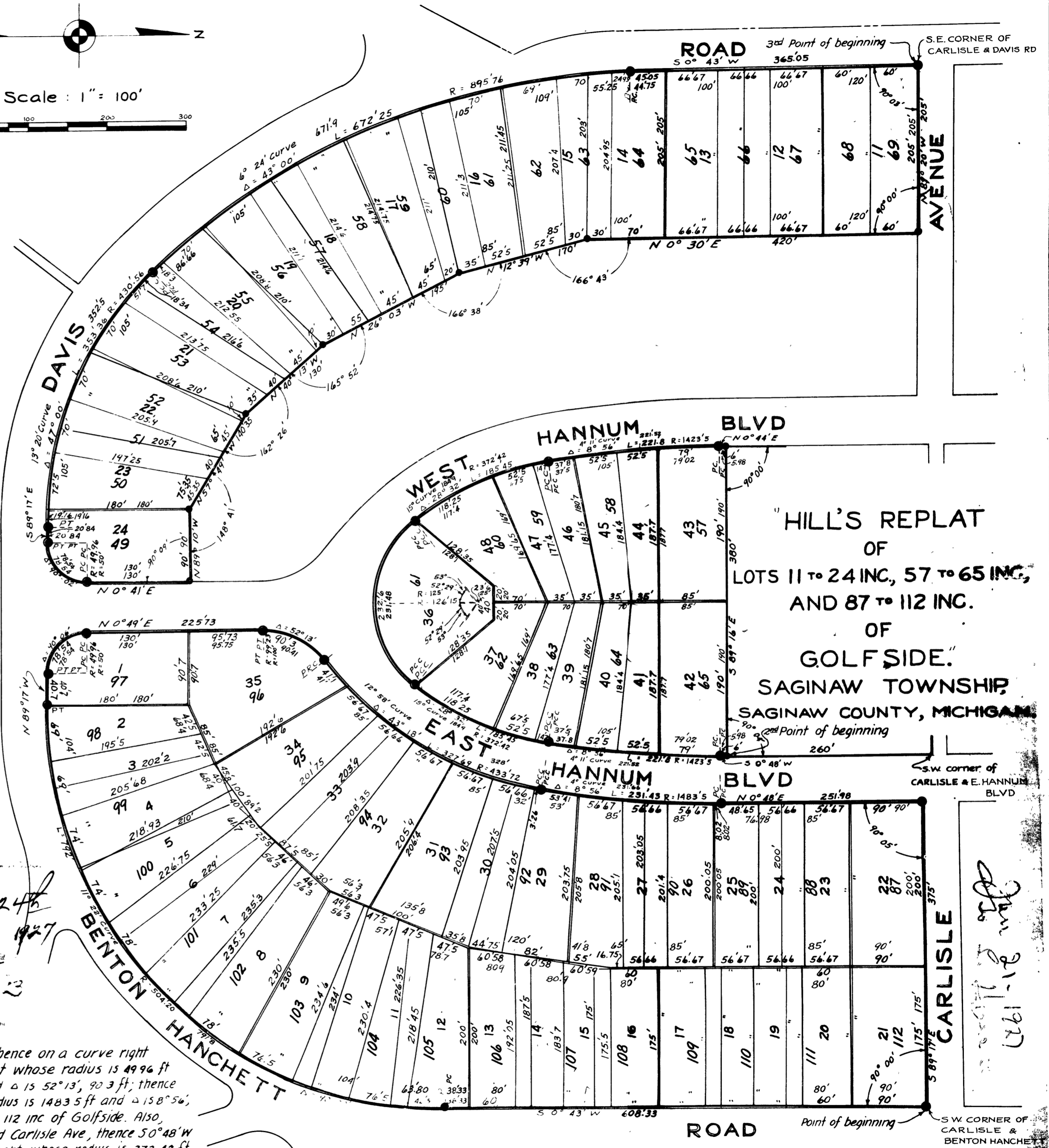
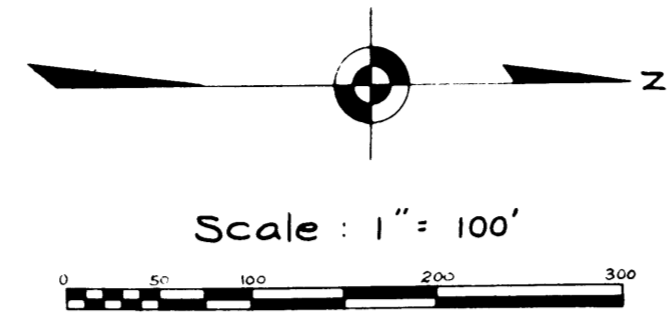
My commission expires OCTOBER 13, 1929

**SURVEYOR'S CERTIFICATE**  
 I hereby certify that the plat hereon delineated is a correct one and that permanent metal monuments of not less than one inch in diameter and fifteen inches in length set in a concrete base at least four inches in diameter and forty eight inches in depth have been placed at points marked thus • as thereon shown at all angles in the boundaries of the land platted, at all the intersections of streets, intersections of alleys, or of streets and alleys and at the intersections of streets and alleys with the boundaries of the plat as shown on said plat.

**CERTIFICATE OF MUNICIPAL APPROVAL**  
 This plat was approved by the Township Board of the Township of Saginaw at a meeting held DECEMBER 10, 1926

**CERTIFICATE OF APPROVAL BY THE BOARD OF COUNTY AUDITORS**  
 Approved by the Board of County Auditors of Saginaw County, Michigan, this 16th day of December, 1926

**COUNTY TREASURERS CERTIFICATE RELATING TO TAXES**  
 OFFICE OF COUNTY TREASURER, SAGINAW COUNTY. #2964 Copy  
 I hereby certify, That there are no tax liens or titles held by the state on the lands described below, and that there are no tax liens or titles held by individuals on said lands, for the five years preceding 19 day of November, 1926, and that the taxes for said period of five years are paid, as shown by the records of this office.  
 This certificate does not apply to taxes, if any, now in process of collection by township, city or village collecting officers.  
 Beginning at the S.W. corner of Carlisle Ave and Benton Hanchett Road; thence S 0° 43' W 608.33 ft; thence on a curve right whose radius is 504.2 ft and Δ is 90°, 792 ft; thence N 89° 17' W 40.7 ft; thence on a curve right whose radius is 49.96 ft and Δ is 90° 06', 78.54 ft; thence N 0° 49' E, 225.73 ft; thence on a curve right whose radius is 99.23 ft, and Δ is 52° 13', 90.3 ft; thence on a curve left whose radius is 433.72 ft, and Δ is 43° 18', 327.69 ft; thence on a curve left whose radius is 1483.5 ft and Δ is 8° 56', 231.43 ft; thence N 0° 48' E 251.98 ft; thence S 89° 17' E 375 ft to point of beginning Being lots 87 to 112 inc of Golfside. Also, beginning at a point on the W of E Hannum Blvd 260 ft S. of the S.W. corner of E Hannum Blvd and Carlisle Ave, thence S 0° 48' W 6 ft; thence on a curve right whose radius is 1423.5 ft and Δ is 8° 56', 221.8 ft; thence on a curve right whose radius is 372.42 ft and Δ is 28° 32', 185.45 ft; thence on a curve right whose radius is 126.15 ft and Δ is 104° 58', 232.6 ft; thence on a curve right whose radius is 372.42 ft and Δ is 28° 32', 185.45 ft; thence on a curve right whose radius is 1423.5 ft and Δ is 8° 56', 221.8 ft; thence N 0° 44' E, 6 ft; thence S 89° 16' E, 380 ft to the point of beginning. Being lots 57 to 65 inc of Golfside. Also, beginning at the S.E. corner of Carlisle Ave and Davis Road; thence S 0° 43' W, 365.05 ft; thence on a curve left whose radius is 895.52 ft and Δ is 43° 00', 672.25 ft; thence on a curve left whose radius is 432.86 ft and Δ is 47° 00', 353.36 ft; thence S 89° 17' E, 20.84 ft; thence on a curve left whose radius is 49.82 ft and Δ is 90° 02', 78.54 ft, thence N 0° 41' E, 130 ft,



thence N 89° 10' W, 90 ft; thence N 57° 49' W, 140.35 ft; thence N 40° 13' W, 130 ft; thence N 26° 03' W, 195 ft; thence N 12° 39' W, 170 ft; thence N 0° 30' E, 420 ft; thence N 89° 20' W, 205 ft to point of beginning. Being Lots 11 to 24 inclusive of Golfside, Saginaw Township, Saginaw County, Michigan.

January 5, 1927  
 Plats  
 E. J. Hesse

Jan 21, 1927  
 126112