

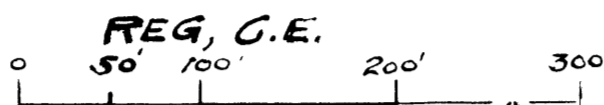
# INDIAN LANES SUBDIVISION

SECTION 20, TOWNSHIP 12 NORTH - RANGE 4 EAST.  
SAGINAW TOWNSHIP, SAGINAW CO.,

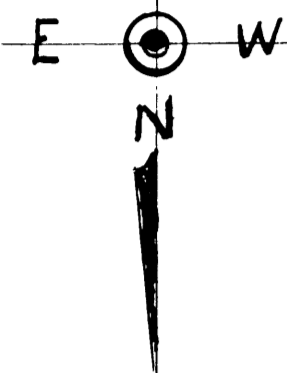
MICHIGAN

CARL H. PETERSON

SCALE 1" = 100'



ALL DIMENSIONS ARE GIVEN IN FEET AND DECIMALS THEREOF



COPY  
Register's Office  
Saginaw County  
Plat of Indian Lanes Subdivision  
Saginaw Township  
was Recorded this 28 day of August A.D., 1953 at 8:40 o'clock A.M. in Liber 7 of Plate  
on Page 41  
Clara P. Turck  
Register of Deeds

### DESCRIPTION OF LAND PLATTED.

THE LAND EMBRACED IN THE ANNEXED PLAT OF INDIAN LANES SUBDIVISION OF THE NORTH 914.1' OF THE WEST 661.0' OF THE EAST 1657.1' OF THE NORTHEAST ONE QUARTER OF SECTION 20 T 12N-R4E, SAGINAW TOWNSHIP, SAGINAW COUNTY, MICHIGAN, AND DESCRIBED AS FOLLOWS: COMMENCING AT A POINT IN THE CENTER LINE OF STATE STREET, 996.6' WEST OF SECTION CORNER COMMON TO SECTIONS 16, 17, 20 and 21 T12N-R4E, SAGINAW TOWNSHIP, SAGINAW COUNTY, MICHIGAN, THENCE NORTH 88 DEGREES WEST, 661' THENCE SOUTH 1 DEGREE 55 MINUTES WEST, 914.1' THENCE SOUTH 88 DEGREES EAST, 661' THENCE NORTH 1 DEGREE 55 MINUTES EAST, TO PLACE OF BEGINNING. 914.1' FEET

### SURVEYOR'S CERTIFICATE.

I HEREBY CERTIFY THAT THE PLAT HEREON DELINEATED IS A CORRECT ONE AND THAT PERMANENT METAL MONUMENTS CONSISTING OF BARS NOT LESS THAN ONE-HALF INCH IN DIAMETER AND 48 INCHES IN LENGTH, OR SHORTER BARS OF NOT LESS THAN ONE HALF INCH IN DIAMETER LAPPED OVER EACH OTHER AT LEAST 6 INCHES WITH AN OVER-ALL LENGTH OF NOT LESS THAN 48 INCHES, ENCASED IN A CONCRETE CYLINDER AT LEAST 4 INCHES IN DIAMETER AND 48 INCHES IN DEPTH HAVE BEEN PLACED AT POINTS MARKED THUS (O) AS THEREON SHOWN AT ALL ANGLES IN THE BOUNDARIES OF THE LAND PLATTED, AT ALL THE INTERSECTIONS OF STREETS, AND AT ALL INTERSECTIONS OF STREETS WITH THE BOUNDARIES OF THE PLAT AS SHOWN ON SAID PLAT.

Carl H. Peterson  
Carl H. Peterson, Reg. C.E.

### CERTIFICATE OF APPROVAL BY THE CITY PLANNING COMMISSION.

UNDER AUTHORITY PROVIDED BY CHARTER, AND ACT 285 OF THE PUBLIC ACTS OF MICHIGAN, FOR 1931, THIS PLAT WAS APPROVED BY THE CITY PLANNING COMMISSION OF THE CITY OF SAGINAW, AT A MEETING HELD, June 23, 1953.

Russel O. Koenig, Engineer  
Secretary.

### CERTIFICATE OF APPROVAL BY THE COUNTY PLAT BOARD.

THIS PLAT WAS APPROVED BY THE COUNTY PLAT BOARD OF SAGINAW COUNTY, MICHIGAN, THIS 18th day of August 1953.

REGISTER OF DEEDS  
AUDITOR  
AUDITOR  
AUDITOR  
Clara P. Turck, Chairman  
Peter Girard, Member  
George Cavanaugh, Member  
Charles E. Taroya, Member

### COUNTY TREASURER'S CERTIFICATE RELATING TO TAXES.

OFFICE OF COUNTY TREASURER, SAGINAW COUNTY.

I HEREBY CERTIFY THAT THERE ARE NO TAX LIENS OR TITLES HELD BY THE STATE ON THE LANDS DESCRIBED HEREON, AND THAT THERE ARE NO TAX LIENS OR TITLES HELD BY INDIVIDUALS ON SAID LANDS, FOR THE FIVE YEARS PRECEDING THE 23rd DAY OF August, 1953 AND THAT THE TAXES FOR SAID PERIOD OF FIVE YEARS ARE PAID, AS SHOWN BY THE RECORDS OF THIS OFFICE. THIS CERTIFICATE DOES NOT APPLY TO TAXES, IF ANY, NOW IN PROCESS OF COLLECTION BY TOWNSHIP, CITY OR VILLAGE COLLECTING OFFICERS.

Carl O. Little, County Treasurer.

### CERTIFICATE OF APPROVAL BY BOARD OF COUNTY ROAD COMMISSIONERS.

THIS PLAT HAS BEEN EXAMINED AND WAS APPROVED AS INDICATED BELOW ON THE 23rd DAY OF August, 1953, BY THE SAGINAW COUNTY BOARD OF ROAD COMMISSIONERS. THE BOARD ASSUMES NO RESPONSIBILITY FOR IMPROVEMENTS OR MAINTENANCE OF THE STREETS AND ROADS AS SHOWN ON THIS PLAT, UNTIL SUCH TIME AS THEY HAVE BEEN GRADED AND DRAINED WITH THE NECESSARY DRAINAGE STRUCTURES INSTALLED AND A GRAVEL, SLAG OR CINDER SURFACE, HAVING A COMPACTED THICKNESS OF AT LEAST 6" AND WIDTH OF AT LEAST 18' HAS BEEN APPLIED AND APPROVED BY THIS BOARD.

Frank Dudewicz, Chairman  
William M. Trim, Member  
Walter F. Graebner, Member

### DEDICATION.

KNOW ALL MEN BY THESE PRESENTS, THAT WE, MAX F. OTTO, AND GLADYS A. OTTO, JULIUS HEINZ AND MOLLIE HEINZ, JOSEPH F. MASAR AND MARIE R. MASAR, AND LEONARD W. BURK AND MARY HELEN BURK, AS PROPRIETORS AND WIVES, HAVE CAUSED THE LAND EMBRACED IN THE ANNEXED PLAT TO BE SURVEYED, LAID OUT AND PLATTED, TO BE KNOWN AS INDIAN LANES SUBDIVISION IN SECTION 20, TOWN 12N \* R4E, SAGINAW TOWNSHIP, SAGINAW, MICHIGAN COUNTY, MICHIGAN, AND THAT THE STREETS AND LANES AS SHOWN ON SAID PLAT ARE HEREBY DEDICATED TO THE USE OF THE PUBLIC, AND ALL BASEMENTS FOR THE USE OF PUBLIC UTILITIES. HOWEVER, EXCEPTING FROM THIS DEDICATION, ANY LAND DESIGNATED ( 2' ) RESERVATION, SUCH LANDS TO BE DEEMED TO BE DEDICATED AUTOMATICALLY AT SUCH TIME AS DRIVES, LANES OR STREET EXTENSIONS, ADJACENT THERETO ARE DEDICATED IN THE ADJOINING PROPERTY.

### SIGNED AND SEALED IN PRESENCE OF

Robert F. Braun  
Max F. Otto (L.S.)  
Gladys A. Otto (L.S.)  
Julius Heinz (L.S.)  
Mollie Heinz (L.S.)  
Joseph F. Masar (L.S.)  
Marie R. Masar (L.S.)  
Leonard W. Burk (L.S.)  
Mary Helen Burk (L.S.)

### ACKNOWLEDGMENT.

STATE OF MICHIGAN, SS.  
COUNTY OF SAGINAW.

ON THIS 23rd DAY OF August, 1953, BEFORE ME, A NOTARY PUBLIC IN AND FOR SAID COUNTY, PERSONALLY CAME THE ABOVE NAMED MAX F. AND GLADYS A. OTTO, HIS WIFE, JULIUS AND MOLLIE HEINZ, HIS WIFE, JOSEPH F. AND MARIE R. MASAR, HIS WIFE, AND LEONARD W. AND MARY HELEN BURK, HIS WIFE, KNOWN TO ME TO BE THE PERSONS WHO EXECUTED THE ABOVE DEDICATION, AND ACKNOWLEDGED THE SAME TO BE THEIR FREE ACT AND DEED.

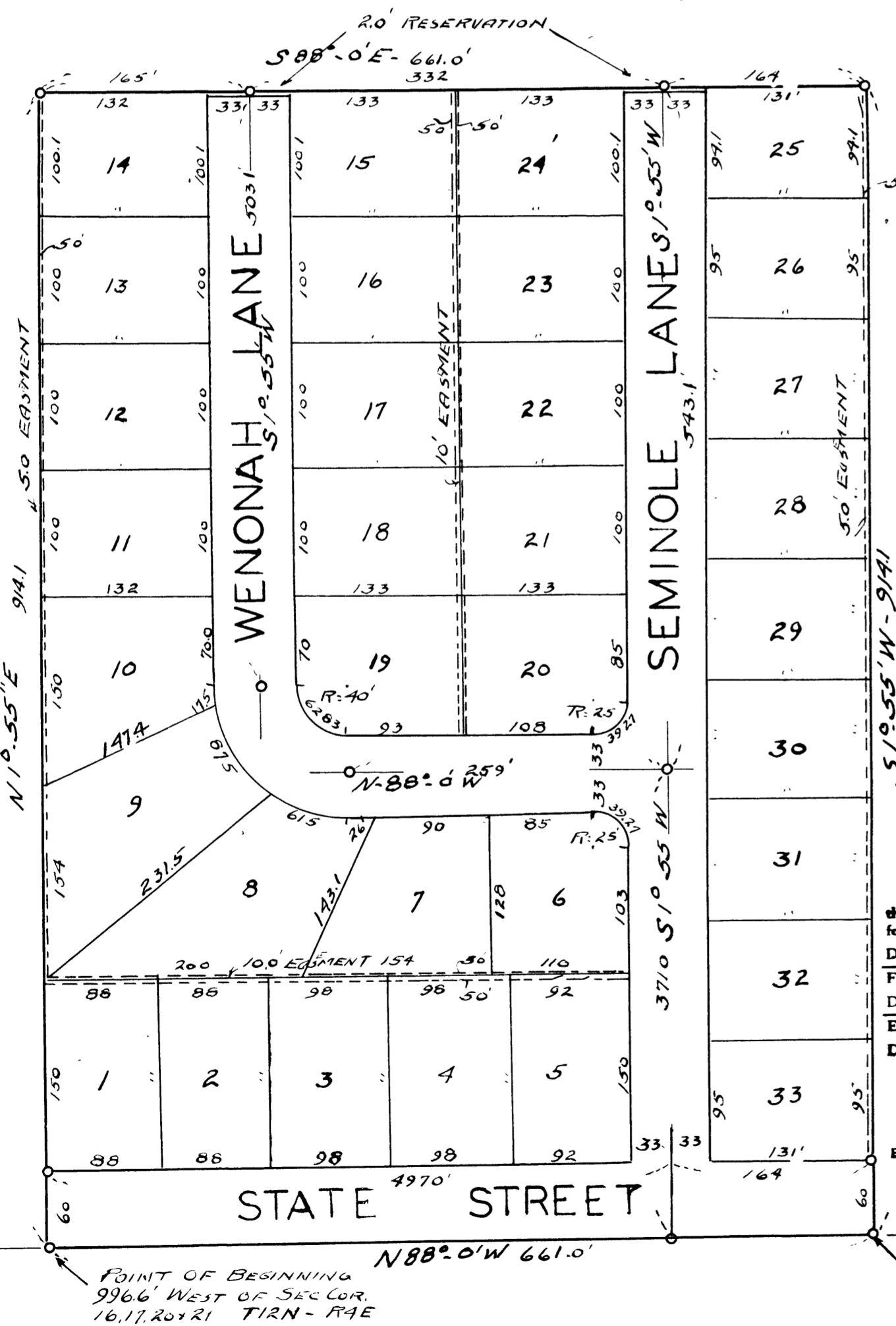
Notary Public, Saginaw Co., Mich.  
Martin Braun

MY COMMISSION EXPIRES .....

### CERTIFICATE OF MUNICIPAL APPROVAL.

THIS PLAT WAS APPROVED BY THE TOWNSHIP BOARD OF THE TOWNSHIP OF SAGINAW, SAGINAW COUNTY MICHIGAN. AT A MEETING HELD, July 6, 1953.

TOWNSHIP CLERK  
Meldron W. McLean



I hereby certify that this copy is a true copy of the map or plat forwarded the Register of Deeds for recording.  
Date August 20, 1953  
Filed in Auditor General's Dept.  
Date August 21, 1953  
Examined and Approved  
Date August 21, 1953  
John B. Weston  
Auditor General  
Plat Engineer

POINT OF BEGINNING  
996.6' WEST OF SEC COR.  
16, 17, 20 & 21 T12N-R4E

9900 TO N 1/4 COR  
SEC 20 T12N-R4E