

KEMERER SUBDIVISION

A PART OF SECTION 30 T.12N. R.4E.

SAGINAW TOWNSHIP - SAGINAW COUNTY - MICHIGAN.

SCALE: 1 INCH = 100 FEET
 0 50 100 200 300 400
 ALL DIMENSIONS ARE GIVEN IN FEET AND DECIMALS THEREOF

SPICER ENGINEERING COMPANY
 SAGINAW, MICHIGAN
 1964

EXAMINED AND APPROVED
 Date April 1, 1964
Belle S. Farnum
 BELLE S. FARNUM
 AUDITOR GENERAL

DEDICATION

KNOW ALL MEN BY THESE PRESENTS, That I, Duane V. Kemerer, Sr., a single man, as proprietor, have caused the land embraced in the annexed plat to be surveyed, laid out and platted to be known as KEMERER SUBDIVISION, A Part of Section 30, T.12 N.-R.4 E., Saginaw Township - Saginaw County - Michigan, and that the Road and Court as shown on said plat are hereby dedicated to the use of the public. Private easements as shown on said plat are hereby reserved for the installation and maintenance of public utilities and no permanent structures are to be located within said easements.

Signed and Sealed in the presence of)

Elmer Spaedt
 Elmer Spaedt
Dorine P. Hiser
 Dorine P. Hiser

Duane V. Kemerer Sr. (L.S.)
 Duane V. Kemerer, Sr.
 3125 Luther Rd.
 Saginaw, Mich.

ACKNOWLEDGMENT

STATE OF MICHIGAN)
 County of Saginaw) ss.

On this 20th day of November 1963, before me, a Notary Public in and for said County, appeared Duane V. Kemerer, Sr., a single man, known to me to be the person who executed the above dedication and acknowledged the same to be his free act and deed.

Jane Brechtelsbauer
 Jane Brechtelsbauer
 My Commission Expires April 5, 1966 Notary Public, Saginaw County, Michigan

DESCRIPTION

The land embraced in the annexed plat of KEMERER SUBDIVISION, A Part of Section 30, T.12 N.-R.4 E., Saginaw Township, Saginaw County, Michigan, is described as follows: commencing on the East line of said Section 30 at a point 419.76 feet Due North of the Southeast corner of said Section; thence Due West 750.00 feet; thence Due North 935.40 feet; thence S.66°-42'-00"E., 582.50 feet; thence Due South 305.00 feet; thence Due East 15.00 feet; thence Due South 100.00 feet; thence Due East 200.00 feet to the East line of said Section 30; thence Due South, along said line, 300.00 feet to the point of beginning. This plat contains 20 Lots numbered from 1 to 20 inclusive.

SURVEYOR'S CERTIFICATE

I hereby certify that the plat herein delineated is a correct one and that permanent metal monuments consisting of bars not less than one-half inch in diameter and 36 inches in length, or shorter bars of not less than one-half inch in diameter lapped over each other at least 6 inches with an over-all length of not less than 36 inches, encased in a concrete cylinder at least 4 inches in diameter and 36 inches in depth have been placed at points marked thus o as thereon shown at all angles in the boundaries of the land platted, at all intersections of streets, at points of curvature and points of tangency in street lines, and at the intersections of streets with the boundaries of the plat as shown on said plat.

Warren G. Wills
 Warren G. Wills, Registered Civil Engineer

COUNTY TREASURER'S CERTIFICATE RELATING TO TAXES
 (Sec. 135, Act 206, 1893 as amended - Sec. 4134, C.L. 1915)
 Office of County Treasurer, Saginaw County

I hereby certify, that there are no tax liens or titles held by the State on the land described hereon, and that there are no tax liens or titles held by individuals on said land, for the five years preceding the 10th day of March 1964, and that the taxes for said period of five years are paid, as shown by the records of this office.

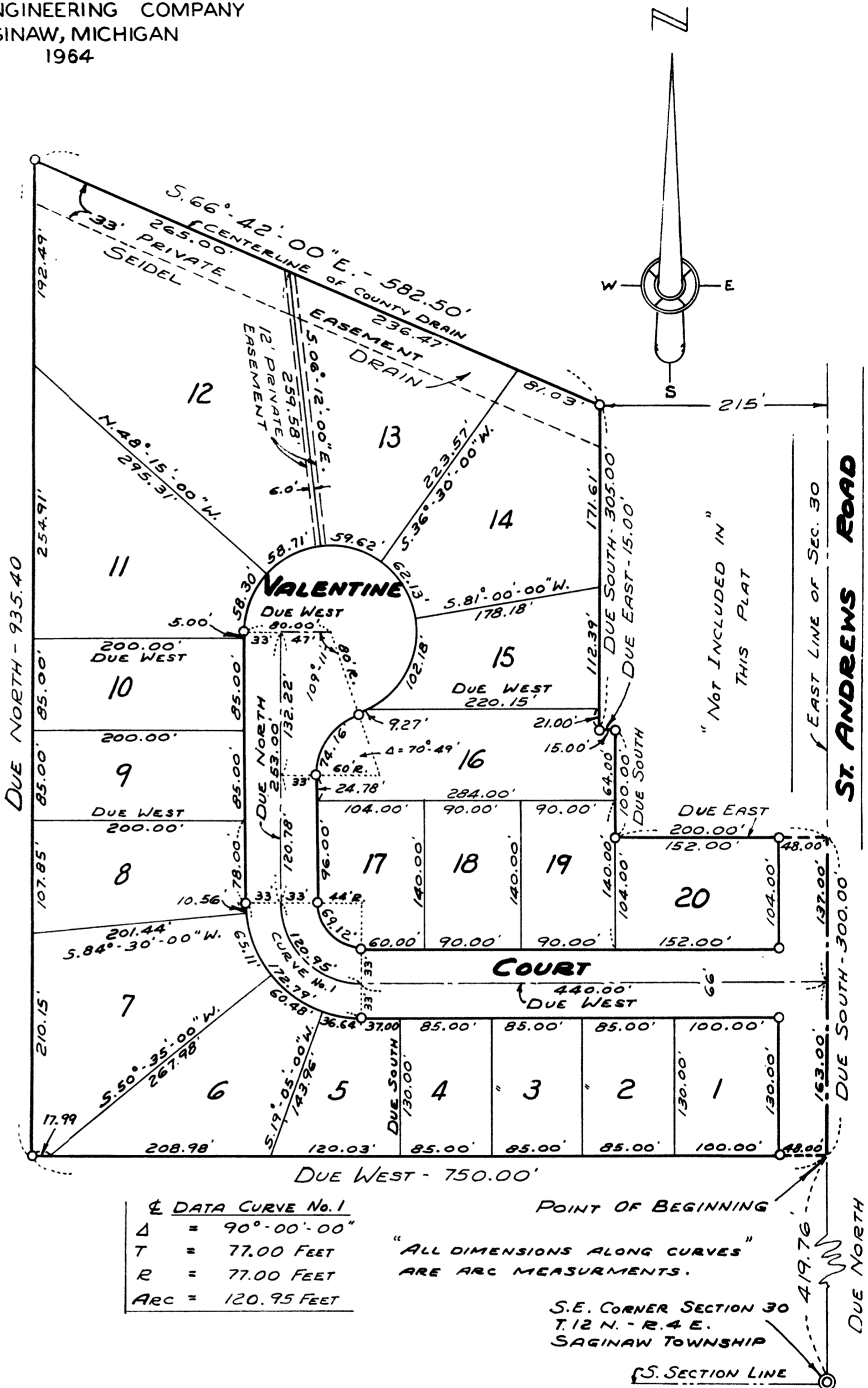
This certificate does not apply to taxes, if any, now in process of collection by Township, City or Village collecting officers.

Raymond L. Dankers
 Raymond L. Dankers County Treasurer

CERTIFICATE OF MUNICIPAL APPROVAL

This plat was approved by the Township Board of the Township of Saginaw, at a meeting held the 9th day of December 1963, and complies with Section 19A and that the width of lots is in compliance with requirements of Section 30, Act 172, of 1929, as amended.

Richard Stroebel
 Richard Stroebel Township Clerk



DATA CURVE No. 1

Δ	= 90°-00'-00"
T	= 77.00 FEET
R	= 77.00 FEET
ARC	= 120.95 FEET

POINT OF BEGINNING
 "ALL DIMENSIONS ALONG CURVES"
 ARE ARC MEASUREMENTS.

S.E. CORNER SECTION 30
 T.12 N.-R.4 E.
 SAGINAW TOWNSHIP
 (S. SECTION LINE)

CERTIFICATE OF APPROVAL BY THE COUNTY PLAT BOARD

This plat was approved by the County Plat Board of Saginaw County, Michigan, this 12th day of March 1964.

Kathryn J. Gage
 Kathryn J. Gage, Register of Deeds, Chairman

R. A. Benway Auditor

William H. Baughman
 William H. Baughman Auditor

Peter Simon
 Peter Simon Auditor

H. J. Dietrich
 H. J. Dietrich, Saginaw County Drain Commissioner

CERTIFICATE OF APPROVAL BY BOARD OF COUNTY ROAD COMMISSIONERS

This plat has been examined and was approved on the 10th day of March 1964, by the Saginaw County Board of Road Commissioners.

4204

REGISTRY OFFICE
 SAGINAW COUNTY, MICHIGAN
 RECEIVED BY REGISTER OF DEEDS
 DAY OF April 1964 AT
 5:00 O'CLOCK P.M. RECORDED
 IN LIBER 14 PLAT 29
Kathryn J. Gage REGISTER

John F. McInnis
 John F. McInnis Chairman

Harold H. Bauer
 Harold H. Bauer Member

Bruce McDonagh
 Bruce McDonagh Member

March 14 Page 29