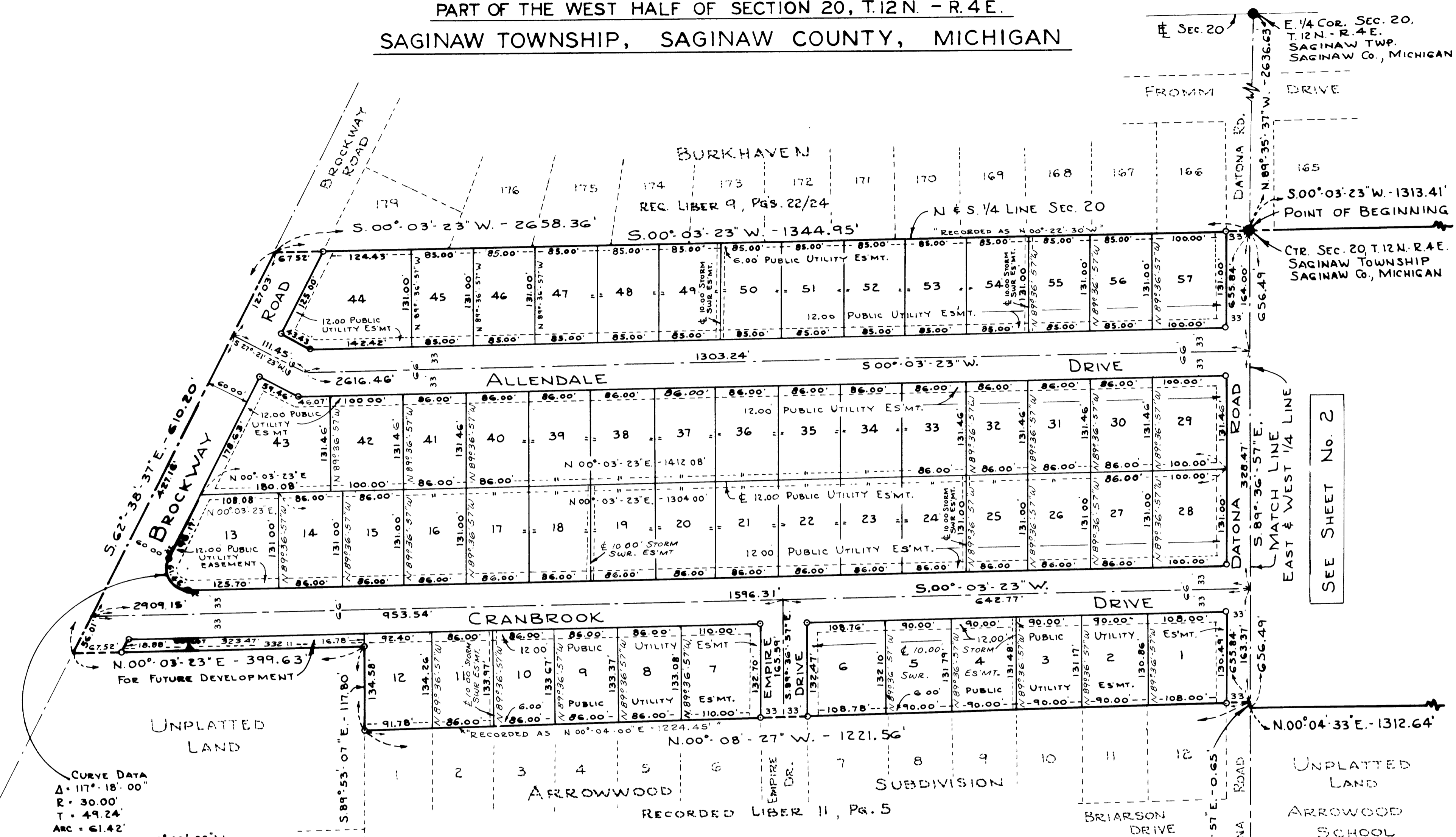


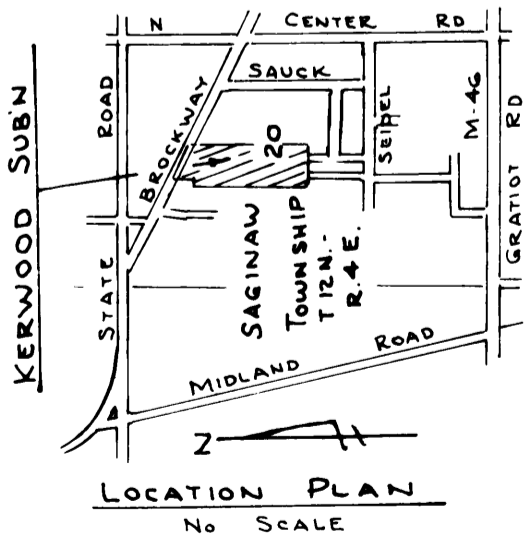
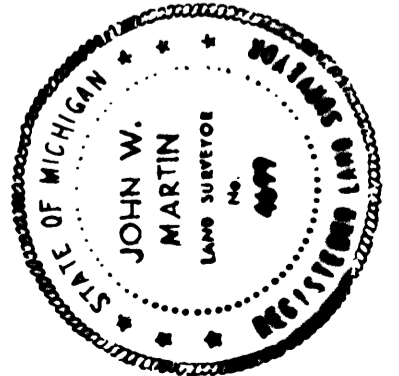
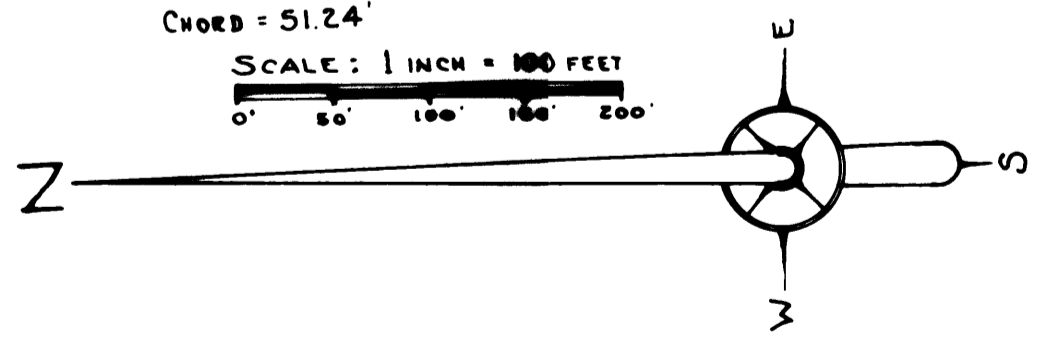
KERWOOD SUBDIVISION

PART OF THE WEST HALF OF SECTION 20, T.12 N. - R. 4 E.
SAGINAW TOWNSHIP, SAGINAW COUNTY, MICHIGAN



CURVE DATA
Δ = 117° 18' 00"
R = 30.00'
T = 49.24'
ARC = 61.42'
CHORD BEARING = S. 58° 42' 23" W.
CHORD = 51.24'

SCALE: 1 INCH = 100 FEET



- NOTE:
- 1- ALL DIMENSIONS ARE GIVEN IN FEET
 - 2- CONCRETE MONUMENTS HAVE BEEN PLACED AT ALL POINTS MARKED "O"
 - 3- SET SOLID IRON BARS 1/2" IN DIA. BY 18" IN LENGTH AT ALL LOT CORNERS
 - 4- BEARINGS ARE TRUE AS DETERMINED FROM AN OBSERVATION OF POLARIS ON 7-2-1970

Richard C. Lohr, Prof. Engineer
August 18, 1972

SEE SHEET No. 2