

KERWOOD SUBDIVISION

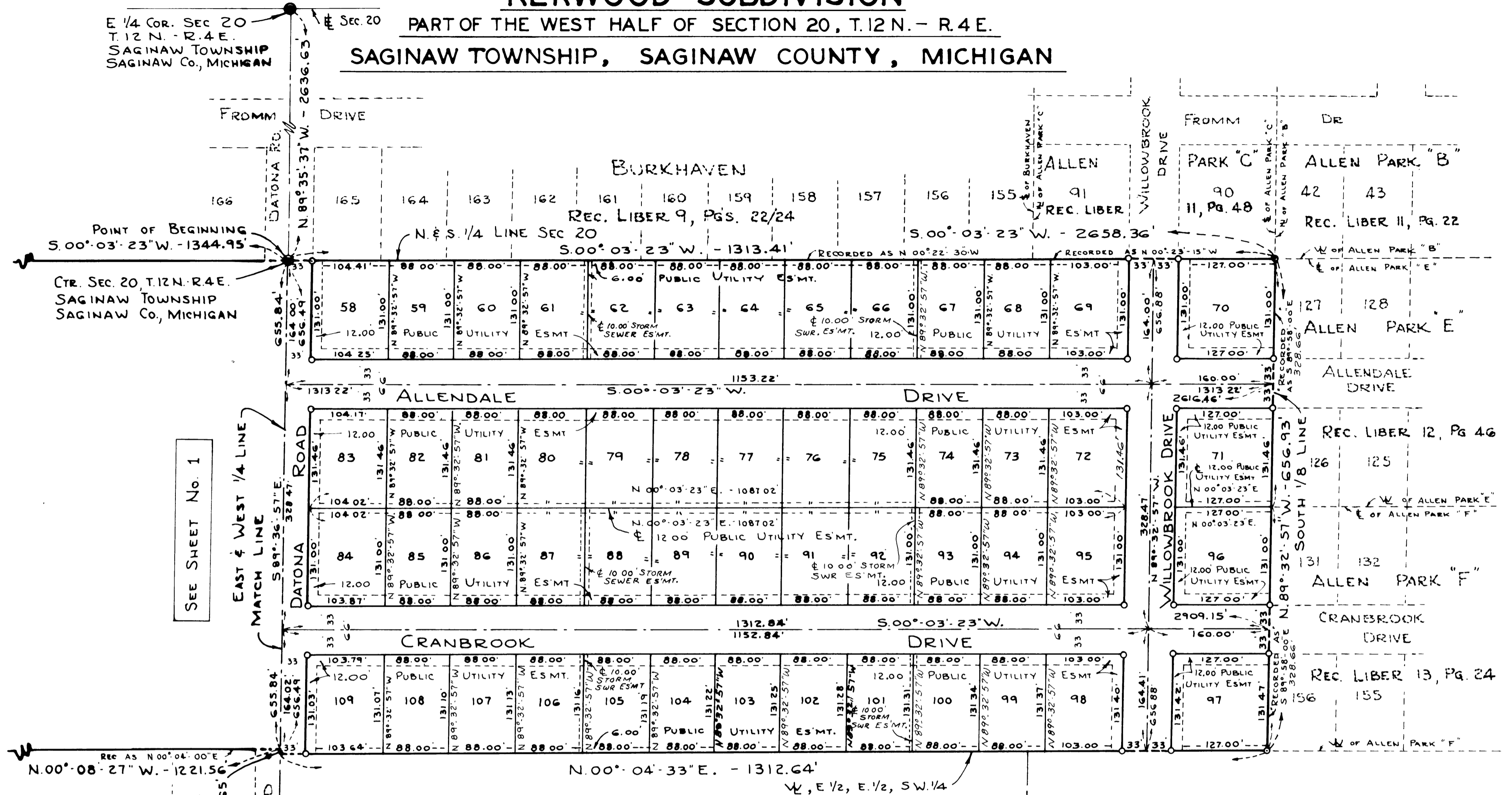
PART OF THE WEST HALF OF SECTION 20, T.12 N. - R.4 E.
SAGINAW TOWNSHIP, SAGINAW COUNTY, MICHIGAN

E 1/4 COR. SEC 20
T.12 N. - R.4 E.
SAGINAW TOWNSHIP
SAGINAW Co., MICHIGAN

POINT OF BEGINNING
S.00°-03'-23"W. - 1344.95'

CTR. SEC. 20, T.12 N. - R.4 E.
SAGINAW TOWNSHIP
SAGINAW Co., MICHIGAN

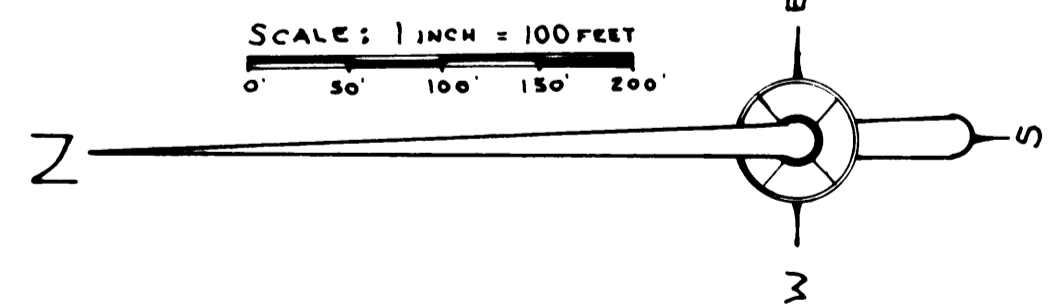
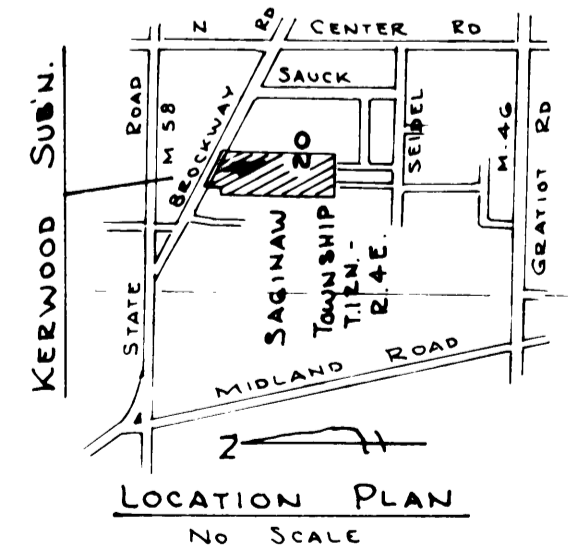
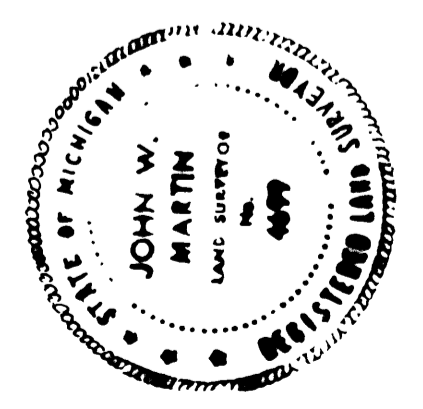
SEE SHEET No. 1



ARROWOOD II
SUBDIVISION
BRIARSON DRIVE
REC. LIBER II
PAGE 5

UNPLATTED LAND
ARROWOOD SCHOOL

UNPLATTED LAND



- NOTE:
- 1- ALL DIMENSIONS ARE GIVEN IN FEET
 - 2- CONCRETE MONUMENTS HAVE BEEN PLACED AT ALL POINTS MARKED "O"
 - 3- SET SOLID IRON BARS 1/2" IN DIA BY 18" IN LENGTH AT ALL LOT CORNERS
 - 4- BEARINGS ARE TRUE AS DETERMINED FROM AN OBSERVATION OF POLARIS ON 7-2-1970