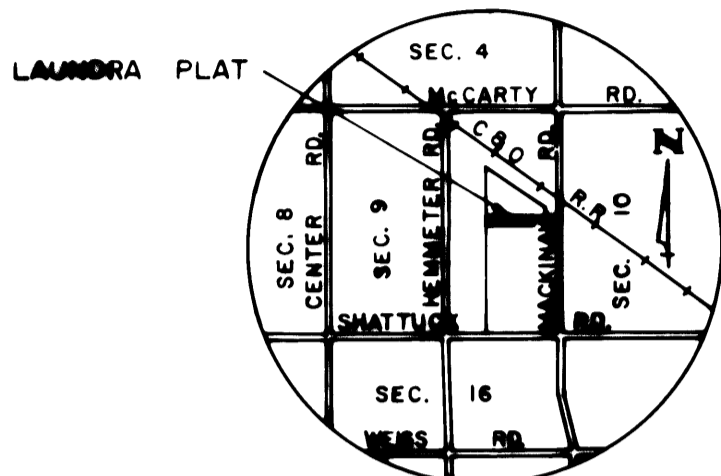
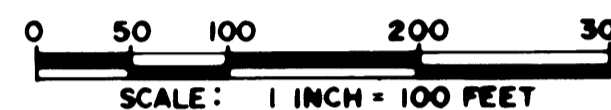
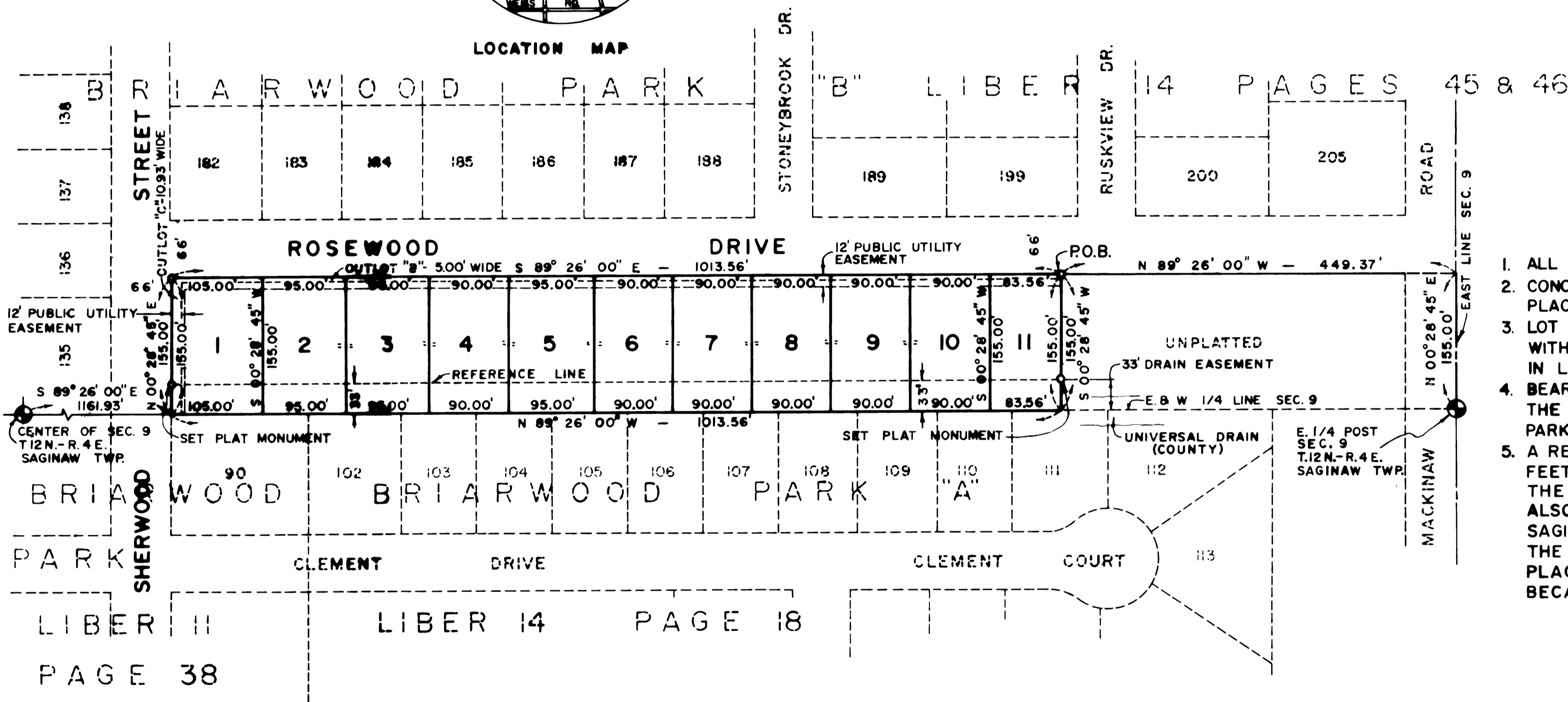


# LAUNDRA PLAT

PART OF THE N.E. 1/4, SECTION 9, T.12 N.-R.4 E.  
SAGINAW TOWNSHIP, SAGINAW COUNTY, MICHIGAN



LOCATION MAP

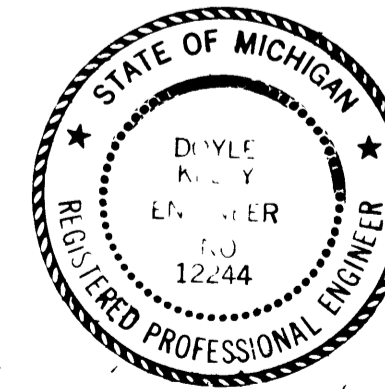


### LEGEND

1. ALL DIMENSIONS ARE IN FEET.
2. CONCRETE MONUMENTS HAVE BEEN PLACED AT ALL POINTS MARKED 'o'.
3. LOT CORNERS HAVE BEEN MARKED WITH 3/4 INCH IRON PIPE, 18 INCHES IN LENGTH.
4. BEARINGS WERE ESTABLISHED FROM THE RECORDED PLAT OF "BRIARWOOD PARK B", LIBER 14, PAGES 45 & 46
5. A REFERENCE LINE IS LOCATED 33 FEET NORTH OF, AND PARALLEL TO, THE SOUTH PLAT LINE. IT IS ALSO THE NORTH LINE OF THE SAGINAW COUNTY UNIVERSAL DRAIN. THE REAR LOT IRONS HAVE BEEN PLACED ON THE REFERENCE LINE BECAUSE OF THE DRAIN DITCH.

Certified true copy of Record  
File

STATE OF MICHIGAN  
*Richard L. Somax*  
 Registered Professional Engineer  
 No. 12244  
 Date September 17, 1976



DOYLE KELLY & ASSOCIATES INC.  
SAGINAW, MICHIGAN