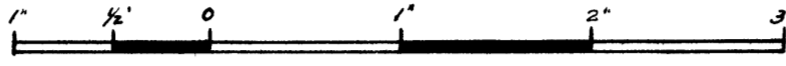


"LEONINE COURT NO 1."

BEING PART OF THE E 1/2 OF THE NW 1/4 OF SEC. 33, T. 12 N. R. 4 E.

SAGINAW COUNTY, MICH.

SCALE 1 INCH = 200 FEET.



Know all Men by these Presents, That I Neil O'Connor as trustee, have caused the land embraced in the annexed plat to be surveyed, laid out and platted to be known as "Leonine Court No. 1" being part of the East 1/2 of the NW 1/4 of section 33, T. 12 N. R. 4 E., Saginaw County, Michigan; and that the Streets as shown on said plat are hereby dedicated to the use of the public.

Henneth D. Rosenberg Witness Neil O'Connor L.S.
Roy F. Gilbert Neil O'Connor

State of Michigan
 County of Saginaw ss
 On the 5th day of Sept, 1941, before me a Notary Public in and for said county, personally came the above named Neil O'Connor, known to me to be the person who executed the above dedication, and acknowledged the same to be his free act and deed.

A. J. Brogger Notary Public, Saginaw County, Michigan.
 My Commission expires July 22 1945

DESCRIPTION OF LAND PLATTED

The land embraced in the annexed plat of "Leonine Court No 1" being part of the E 1/2 of the NW 1/4 of section 33, T. 12 N.R. 4 E., Saginaw County, Michigan is described as follows; beginning at the center post of section 33, T. 12 N. R. 4 E. and running thence N 88°30' W, 1314.5'; thence N 2°00' E on the W 1/8 line 1928'; thence S 88°33' E a distance of 1312' to the N and S 1/4 line of said section 33; thence S 1°56' W on north and south 1/4 line of said section 33 a distance of 1929' to the place of beginning.

SURVEYOR'S CERTIFICATE

I hereby certify that the plat hereon delineated is a correct one and that permanent metal monuments consisting of 3/4 inch pipe 48" in length set in concrete 4 inches in diameter and 48 inches in depth have been placed at points marked o as thereon shown at all angles in the boundaries of land platted, at the intersections of streets, and at intersections of streets with boundaries of land platted.

David A. Nicol David A. Nicol Reg. Surveyor.

COUNTY TREASURER'S CERTIFICATE

Office of the County Treasurer, Saginaw County, Michigan.

I hereby certify that there are No tax liens or titles held by the State on lands described hereon, and that there are No tax liens or titles held by individuals on said lands for five years preceding the 5th day of September, 1941 and that the taxes for the said period of five years are all paid as shown by the records of this office. This certificate does not apply to taxes, if any, now in process of collection by Township, City or Village collecting officers.

W. C. Little County Treasurer, Saginaw County, Michigan.

APPROVAL BY THE BOARD OF COUNTY ROAD COMMISSIONERS.

This plat was approved by the Board of County Road Commissioners of the County of Saginaw, Michigan at a meeting held Sept 9th 1941.

Charles Gottschalk Chairman
Arthur Rainbold
G. E. Ward

CERTIFICATE OF APPROVAL BY THE TOWNSHIP BOARD

This plat was approved by the Township Board of the Township of Saginaw at a meeting held 25 day of August 1941.

George Emerich Supervisor
Meldron W. McLean Clerk

APPROVAL BY THE COUNTY BOARD OF AUDITORS

This plat was approved by the County Board of Auditors of Saginaw County, Michigan at a meeting held on the 11th day of Sept 1941.

Fred Zwork Chairman
George Carmaugh
Albert Kipp

FILED IN AUDITOR GENERAL'S DEPT.

September 25
Mayme Jewell Purdy DEPUTY AUDITOR GENERAL

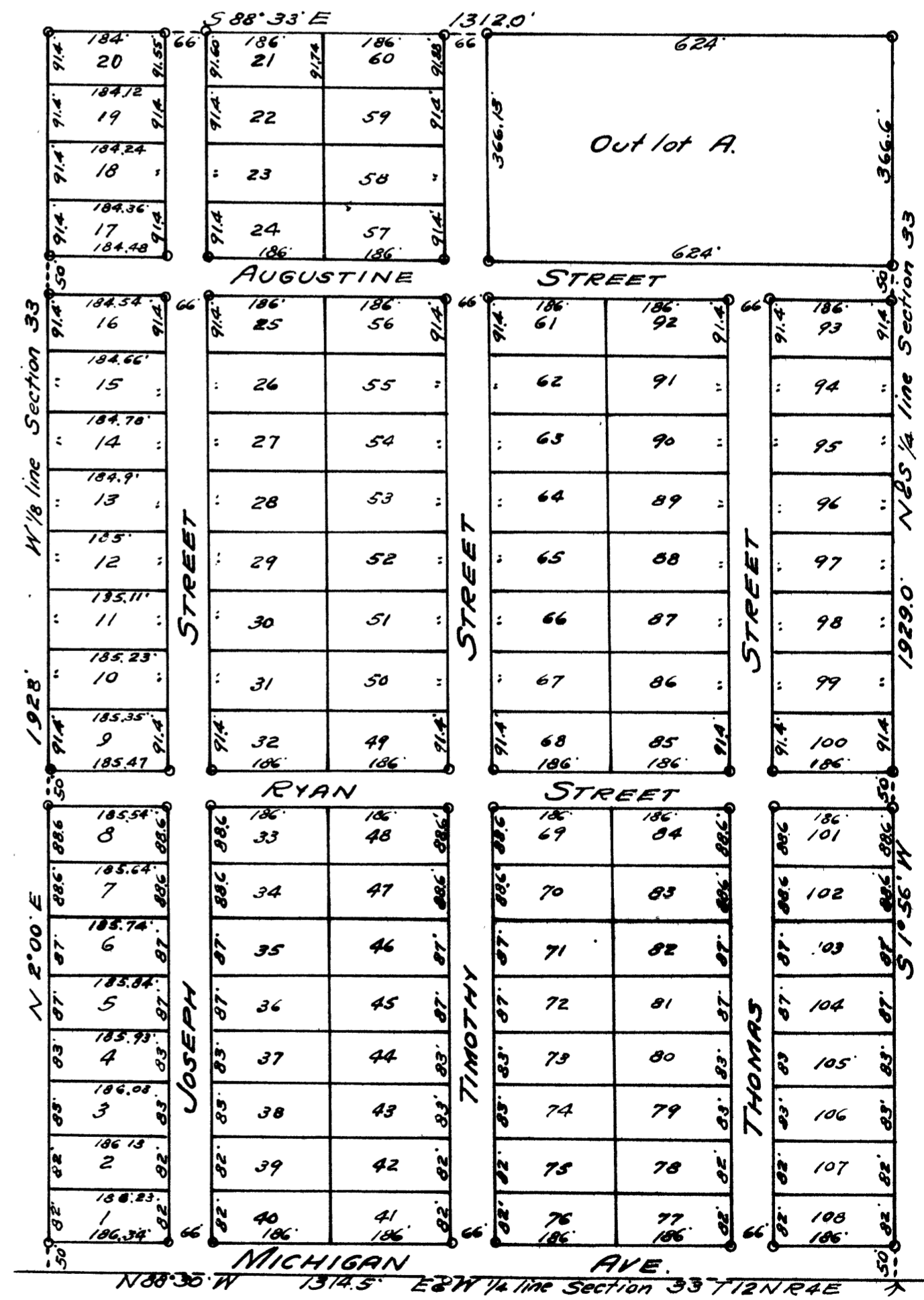
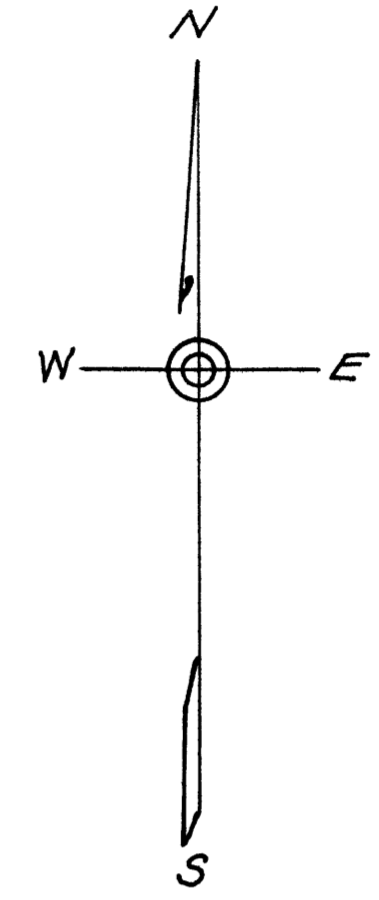
COPY
 Register's Office
 Saginaw County, ss.
 Plat of Leonine Court No. 1
 Saginaw Township
 was Recorded the 15th day of September, 1941 at 10:00 o'clock
A. M. in Book 55 of File 82
 on Page 41
Chas. B. Bell Register of Deeds
 ORIGINAL ON FILE

AN FREDERICK COMPANY COPY IS A TRUE COPY OF THE MAP OR PLAT FORWARDED THE REGISTER OF DEEDS FOR RECORDING.

COMPARED Sept 12, 1941
 Mayme Jewell Purdy DEPUTY AUDITOR GENERAL

Examined and Approved
Sept 12, 1941

Mayme Jewell Purdy Deputy Auditor General



Place of beginning Center post Sec. 33, T. 12 N. R. 4 E.