

# MAPLE WOODS EAST

PART OF THE SE 1/4, SECTION 4, T.12N.-R.4E.  
SAGINAW TOWNSHIP, SAGINAW COUNTY, MICHIGAN

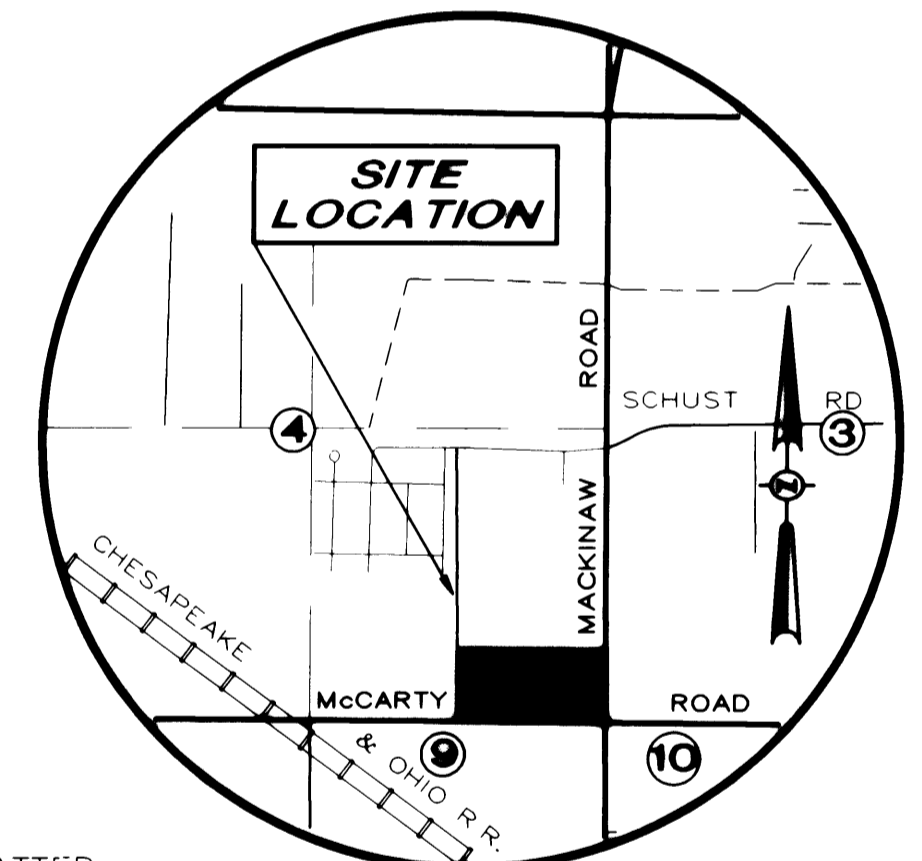
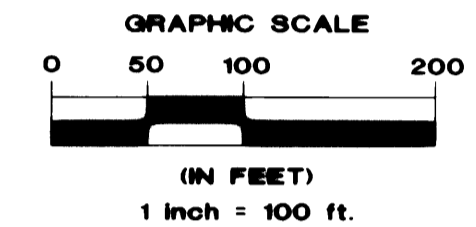
CERTIFIED TRUE COPY OF  
RECORDED PLAT  
BY DEPARTMENT OF COMMERCE

By Maynard R. Dyer  
Maynard R. Dyer, P.S. Ca  
Manager  
Subdivision Control Unit

Date February 28, 1995

**CURVE TABLE**

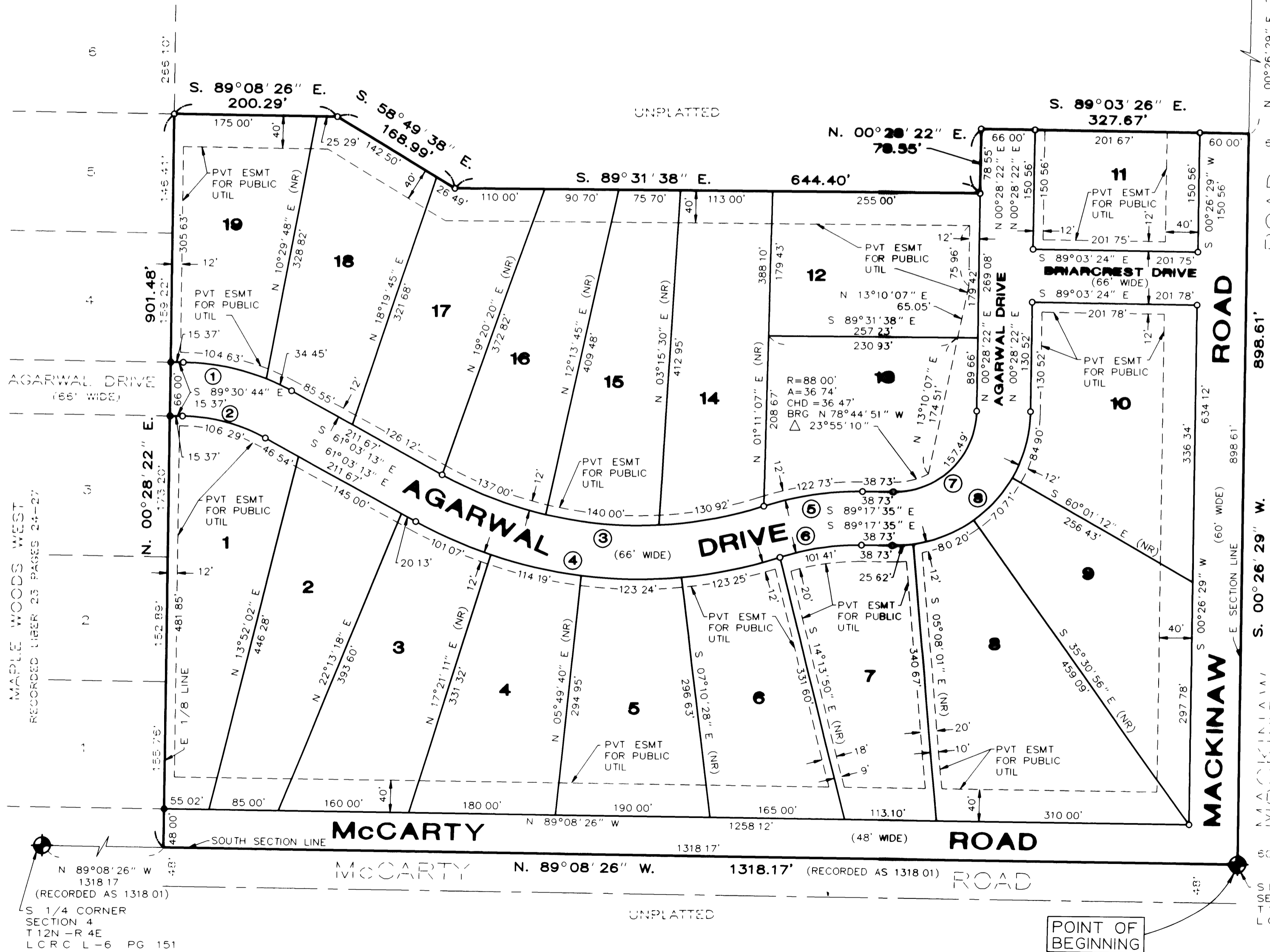
CURVE	RADIUS	LENGTH	CHORD	BEARING	DELTA
1	280.00'	139.08'	137.65'	S 75°16'58"E	28°27'31"
2	214.00'	106.29'	105.20'	S 75°16'58"E	28°27'31"
3	500.00'	407.92'	381.70'	S 84°25'31"E	46°44'37"
4	566.00'	461.75'	441.06'	S 84°25'31"E	46°44'37"
5	380.00'	122.73'	122.19'	N 81°27'25"E	18°30'16"
6	314.00'	101.41'	100.97'	N 81°27'25"E	18°30'16"
7	100.00'	157.49'	141.71'	N 45°35'24"E	90°14'03"
8	166.00'	261.43'	235.24'	N 45°35'24"E	90°14'03"



**LOCATION MAP**  
NOT TO SCALE

**LEGEND**

- ALL DIMENSIONS ARE IN FEET.
- MONUMENTS, CONSISTING OF IRON RODS, ONE HALF INCH IN DIAMETER AND 36 INCHES IN LENGTH WITH CAP No. 26454, ENCASED IN CONCRETE CYLINDERS, 4 INCHES IN DIAMETER AND 36 INCHES IN LENGTH, HAVE BEEN PLACED AT ALL POINTS SHOWN BY SYMBOL "O".
- SET 1/2 INCH IRON ROD, 18 INCHES IN LENGTH WITH CAP No. 26454, AT ALL LOT CORNERS, EXCEPT AS NOTED.
- (R) INDICATES RADIAL LINE, (NR) INDICATES NON-RADIAL LINE
- BEARINGS WERE DERIVED FROM "MAPLE WOODS WEST," RECORDED IN LIBER 23 OF PLATS, PAGES 24 - 27, SAGINAW COUNTY RECORDS.
- ALL CURVILINEAR DIMENSIONS ARE ARC LENGTHS.
- "●" INDICATES FOUND CONCRETE MONUMENT.



E 1/4 CORNER  
SECTION 4  
T.12N.-R.4E.  
LCRC L-6 PG 154

ROAD

ROAD

ROAD

SE CORNER  
SECTION 4  
T.12N.-R.4E.  
LCRC L-6 PG 154

POINT OF BEGINNING

MAPLE WOODS WEST  
RECORDED LIBER 23 PAGES 24-27

N 89°08'26" W  
1318.17'  
(RECORDED AS 1318.01)  
S 1/4 CORNER  
SECTION 4  
T.12N.-R.4E.  
LCRC L-6 PG 151

*Brian D Ferguson*  
Brian D Ferguson  
P.S. No. 26454