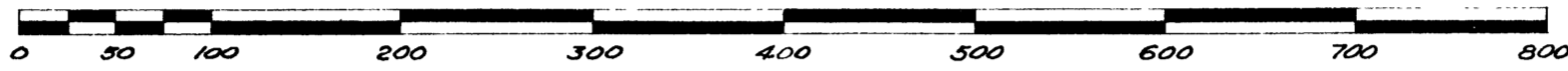


MARYWOOD PARK

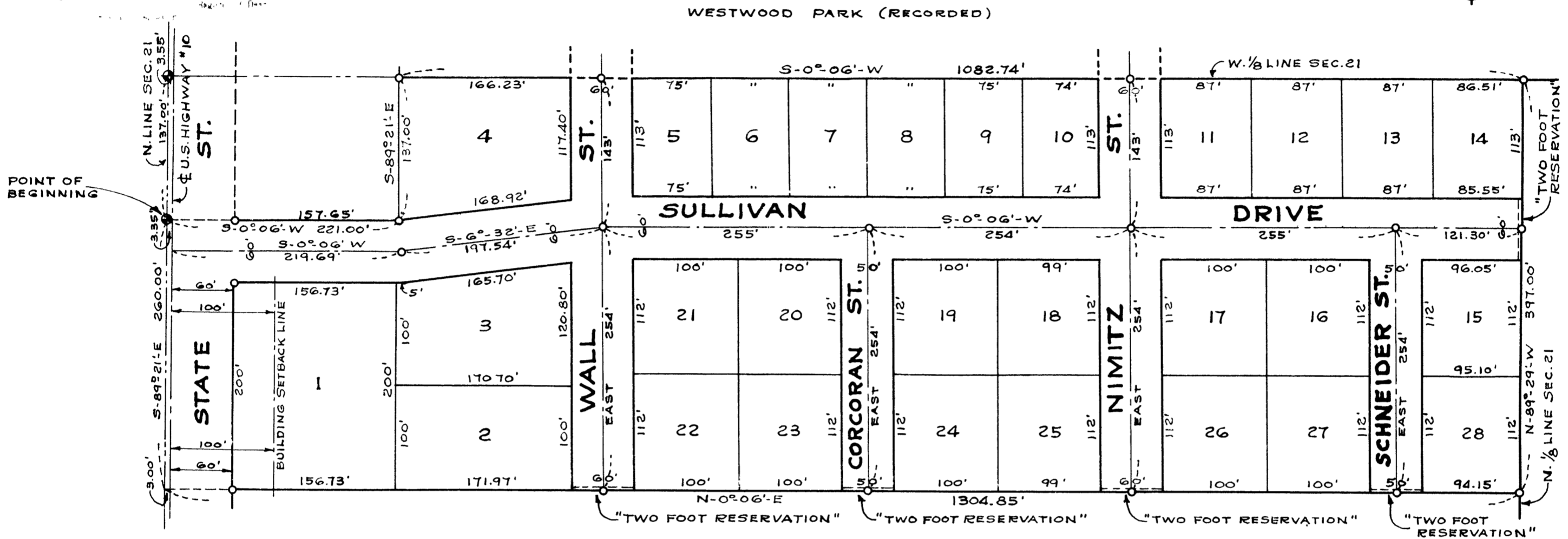
SECTION TWENTY ONE-TOWNSHIP TWELVE NORTH-RANGE FOUR EAST
SAGINAW TOWNSHIP-SAGINAW COUNTY-MICHIGAN

COPY
Recorder's Office
County
Plat of
was Recorded this
at Page

SCALE - ONE INCH EQUALS ONE HUNDRED FEET



ALL DIMENSIONS ARE GIVEN IN FEET AND DECIMALS THEREOF



DEDICATION

KNOW ALL MEN BY THESE PRESENTS, That we John M. Sullivan and Kathleen A. Sullivan, his wife, and Raymond A. Schneider, a bachelor, as proprietors, have caused the land embraced in the annexed plat to be surveyed, laid out and platted, to be known as Marywood Park, Section Twenty One, Township Twelve North, Range Four East, Saginaw Township, Saginaw County, Michigan and that the streets as shown on said plat are hereby dedicated to the use of the public, however, excepting from this dedication any lands designated "TWO FOOT RESERVATION" such lands to be deemed to be dedicated automatically at such time as street extensions adjacent thereto are dedicated in adjoining property.

Signed and Sealed in Presence of
John M. Sullivan, John M. Sullivan, L.S.
Kathleen A. Sullivan, Kathleen A. Sullivan, L.S.
Raymond A. Schneider, Raymond A. Schneider

STATE OF MICHIGAN } S.S.
County of Saginaw

On this 22 day of October, 1949 before me, a Notary Public in and for said county, personally came the above named John M. Sullivan and Kathleen A. Sullivan, his wife, and Raymond A. Schneider, a bachelor, known to me to be the persons who executed the above dedication and acknowledged the same to be their free act and deed.

Martin Braun, Notary Public, Saginaw County, Michigan.

My Commission expires 3-6-53

SURVEYOR'S CERTIFICATE

I hereby certify that the plat hereon delineated is a correct one and that permanent metal monuments consisting of bars not less than one-half inch in diameter and 48 inches in length, or shorter bars of not less than one-half inch in diameter lapped over each other at least 6 inches with an over-all length of not less than 48 inches, enclosed in a concrete cylinder at least 4 inches in diameter and 48 inches in depth have been placed at points marked thus 0 as thereon shown at all angles in the boundaries of the land platted, at all the intersections of streets, intersections of alleys, or of streets and alleys and at the intersections of streets and alleys with the boundaries of the plat as shown on said plat.

Fred Cooper, Registered Land Surveyor and Professional Engineer

DESCRIPTION OF LAND PLATTED

The land embraced in the annexed plat of Marywood Park, Section Twenty One, Township Twelve North, Range Four East, Saginaw Township, Saginaw County, Michigan, is described as follows:- Beginning at a point on the North line of said Section 21, said point being 137.00 feet Westerly from the West 1/2 line of said Section 21; thence S-0°-06'-W and parallel to said West 1/2 line, 221 feet; thence S-89°-21'-E and parallel to said North line of Section, 137.00 feet, to said West 1/2 line of Section; thence S-0°-06'-W, along said West 1/2 line of Section, 1082.74 feet, to the North 1/2 line of said Section; thence N-89°-21'-E, along said North 1/2 line, 397.00 feet; thence N-0°-06'-E and parallel to said West 1/2 line of Section, 1304.85 feet, to the North line of said Section; thence S-89°-21'-E, along said North line of Section 21, 260.00 feet to the point of beginning.

CERTIFICATE OF MUNICIPAL APPROVAL

This plat was approved by the Township Board of the Township of Saginaw at a meeting held Nov 7, 1949

Melton W. McLean - Clerk

CERTIFICATE OF MUNICIPAL APPROVAL (CITY OF SAGINAW PLANNING COMMISSION)

This plat was approved by the City Planning Commission of the City of Saginaw at a meeting held July 25, 1949

Russell O. Koenig - Secretary

CERTIFICATE OF APPROVAL BY BOARD OF COUNTY ROAD COMMISSIONERS

This plat has been examined and was approved on the 25th day of October, 1949 by the Saginaw County Board of Road Commissioners.

The Board of County Road Commissioners of Saginaw County, Michigan assumes no responsibility for the improvement or maintenance of the streets and roads shown on this plat until such time as they have been graded and drained with the necessary drainage structures installed and a gravel, slag, or cinder surface having a compact thickness of at least 6 inches and a width of at least 18 feet has been applied and approved by this board.

William Trim - Chairman
Frank Dudewicz - Member
William Sommerfield - Member

CERTIFICATE OF APPROVAL BY THE BOARD OF COUNTY AUDITORS

Approved by the Board of County Auditors of Saginaw County, Michigan, this 24 day of Oct, 1949

Peter Girard - Chairman
George Cavanaugh
Charles Taraya, Jr.

COUNTY TREASURER'S CERTIFICATE RELATING TO TAXES (Sec. 135, Act 206, 1893, as amended - Sec. 4134, C.L. 1915)

Office of County Treasurer, Saginaw County.
I hereby certify, that there are no tax liens or titles held by the State on the lands described hereon, and that there are no tax liens or titles held by individuals on said lands, for the five years preceding the 26th day of October, 1949 and that the taxes for said period of five years are all paid, as shown by the records of this office.
This certificate does not apply to taxes, if any, now in process of collection by township, city or village collecting officers.

Carl O. Little - County Treasurer

I HEREBY CERTIFY THAT THIS COPY IS A TRUE COPY OF THE MAP OR PLAT FORWARDED THE RECORDER'S OFFICE FOR RECORDING.

Mayme Jewell Turdy, Deputy Auditor General

Examined and Approved

Mayme Jewell Turdy, Deputy Auditor General

FILED IN AUDITOR GENERAL'S OFFICE

Mayme Jewell Turdy, Deputy Auditor General

APPROVED
Charles M. Ziegler, State Highway Commissioner