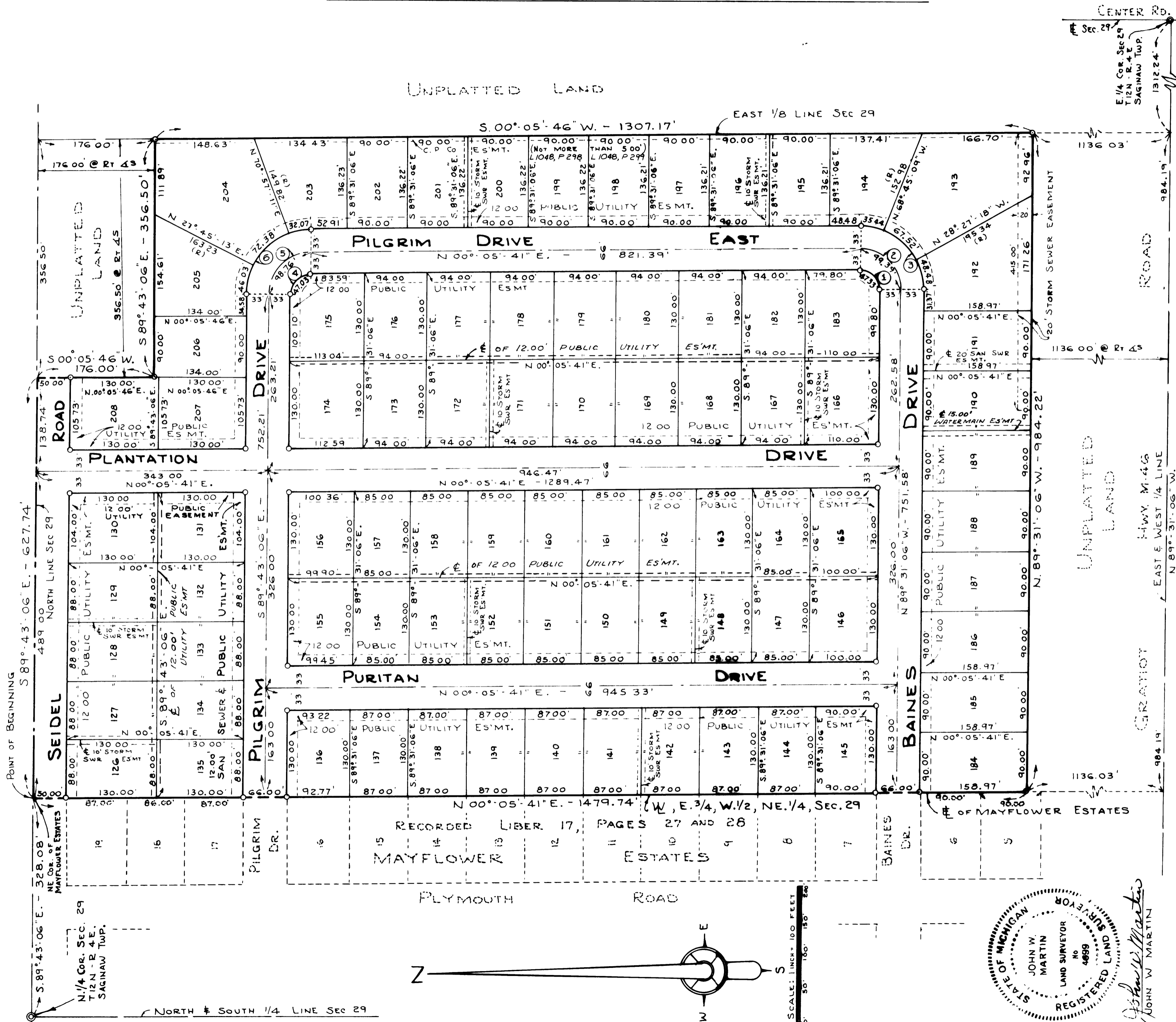


MAYFLOWER ESTATES NUMBER THREE

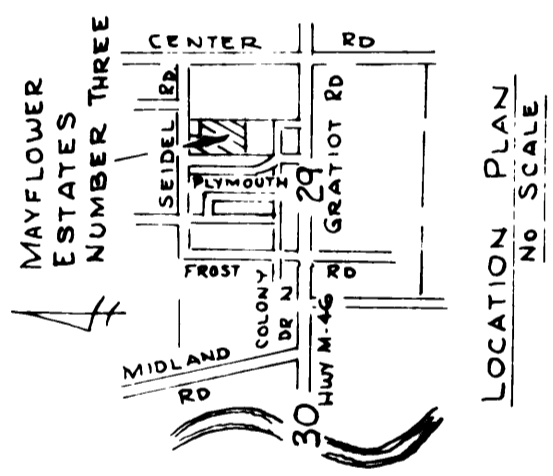
PART OF THE NORTHEAST 1/4, SECTION 29, T.12N.-R.4E.

SAGINAW TOWNSHIP, SAGINAW COUNTY, MICHIGAN



CENTER RD.
Sec. 29
E 1/4 COR. SEC. 29
T.12N.-R.4E
SAGINAW TWP.

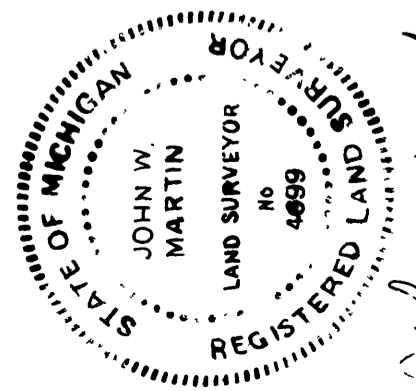
CERTIFIED TRUE COPY OF RECORDED PLAT
Loren E. Monroe
LOREN E. MONROE
STATE TREASURER
By *Richard E. Tomasz*
Richard E. Tomasz, Plat Examiner
Date *May 1, 1980*



LOCATION PLAN
NO SCALE

CURVE DATA					
NO	DELTA ANGLE	RADIUS	ARC	CHORD	TANGENT
1	90° 23' 13"	30.00'	47.33'	42.57'	30.20'
2	"	63.00'	99.39'	89.40'	63.43'
3	"	96.00'	151.44'	136.22'	96.65'
4	89° 48' 47"	30.00'	47.03'	42.36'	29.90'
5	"	63.00'	98.76'	88.95'	62.79'
6	"	96.00'	150.48'	135.54'	95.69'

NOTE:
1- ALL DIMENSIONS ARE GIVEN IN FEET
2- CONCRETE MONUMENTS HAVE BEEN PLACED AT ALL POINTS MARKED "O"
3- SET SOLID IRON BARS 1/2" IN DIA. BY 18" IN LENGTH AT ALL LOT CORNERS
4- ALL CURVILINEAR MEASUREMENTS ARE ARC DISTANCES
5- (R) INDICATES A RADIAL LINE
6- BEARINGS WERE ESTABLISHED FROM MAYFLOWER ESTATES RECORDED IN LIBER 17 PAGES 27 AND 28



John W. Martin
JOHN W. MARTIN

