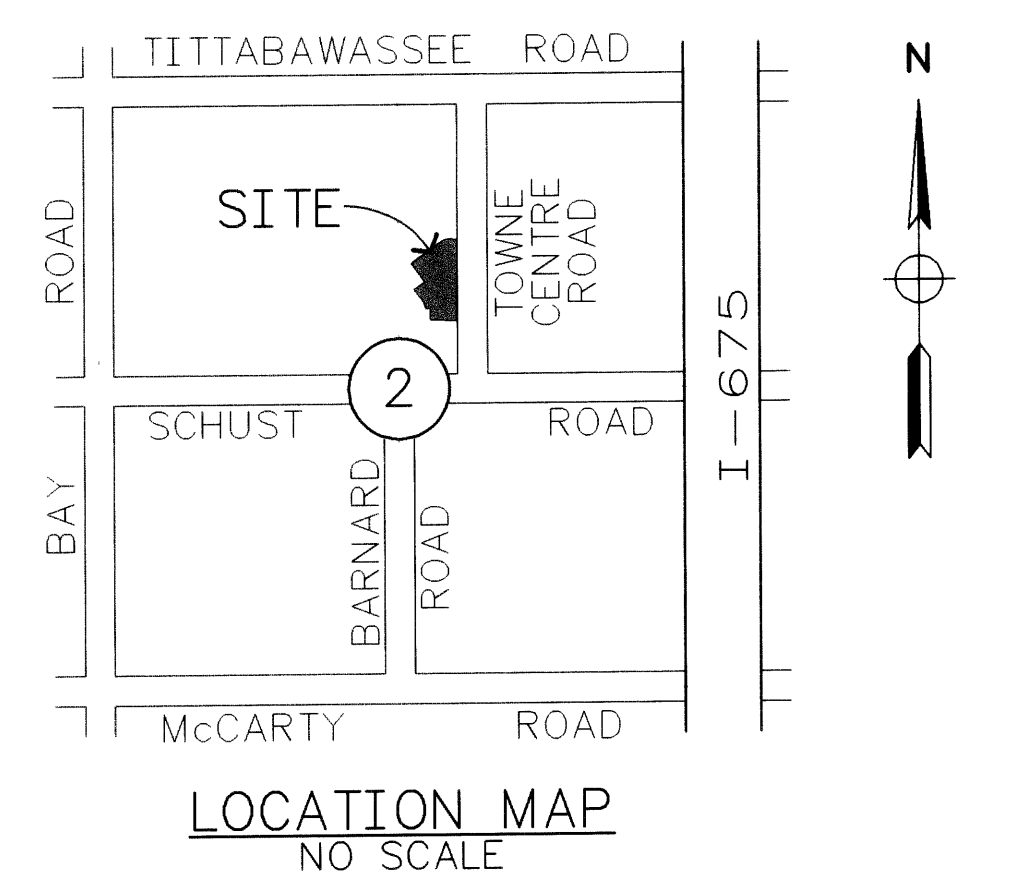
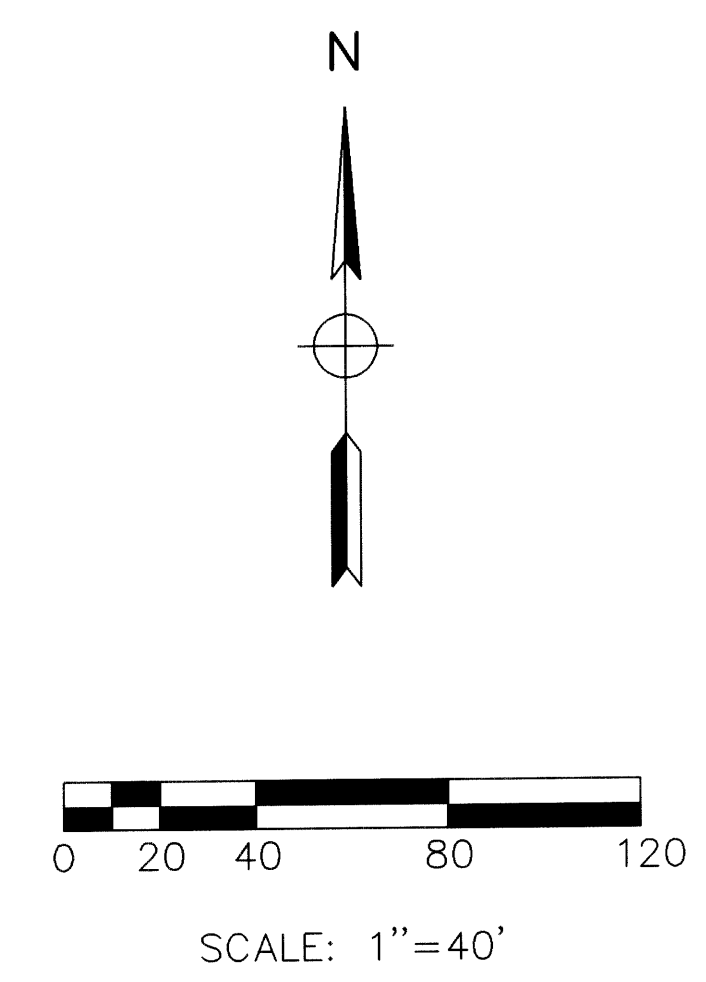
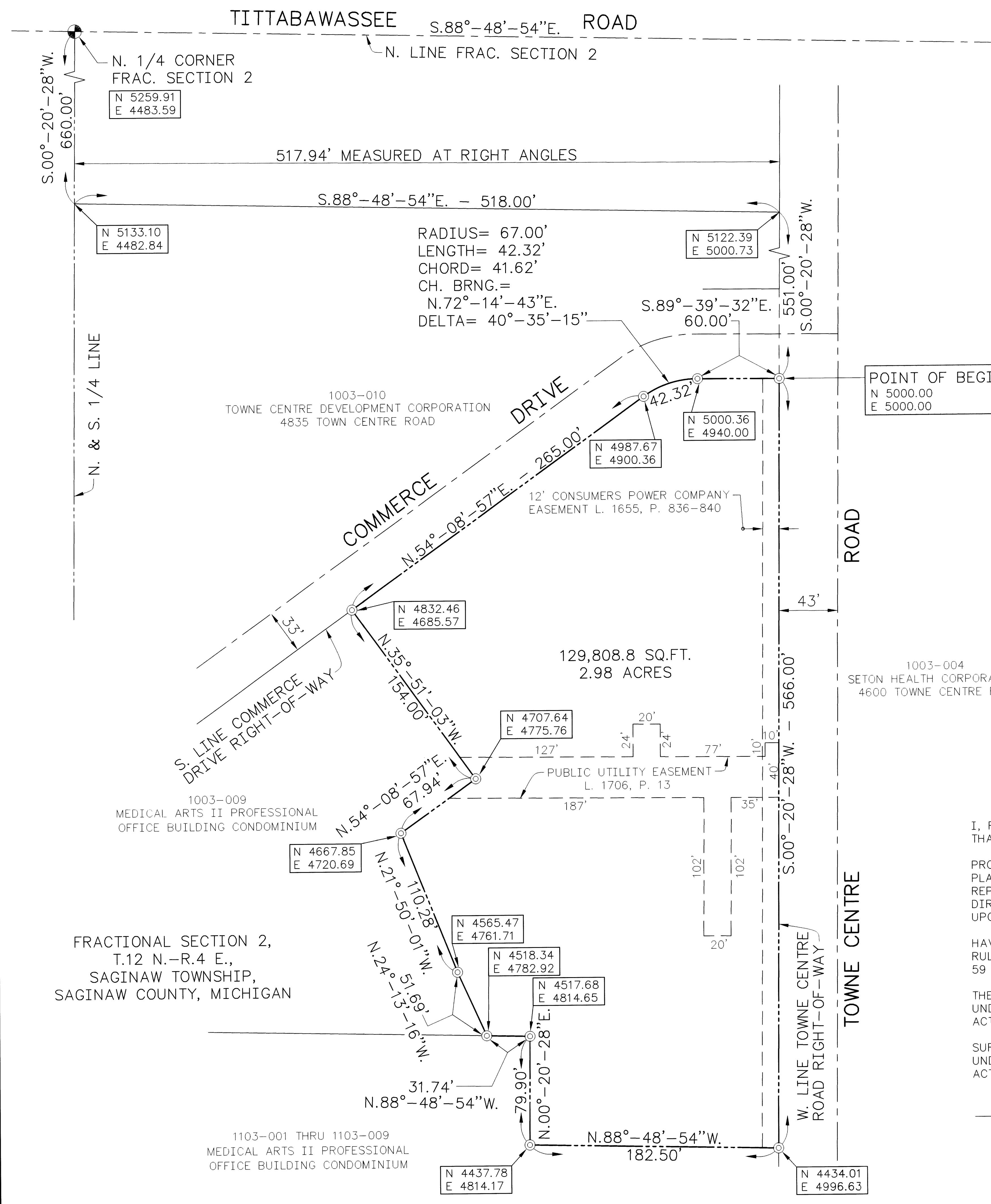


RESTORED BY	GCS	WORKORDER NO.	75-95-360	REVISIONS: CAD CORRECTED	1	4
DRAWN BY	GCS	ACAD FILE	D303302		2	5
CHECKED BY	RZL	PLOTTING SCALE	1"=40'		3	6
APPROVED BY	RCP				4	



**LEGEND:**

- N 5000.00  
E 5000.00 — COORDINATE POINT
- ⊙ — 1/2 INCH STEEL ROD 36" IN LENGTH COMPLETELY ENCASED IN CONCRETE
- ⊕ — SECTION CORNER

**NOTES:**

BEARINGS ARE ESTABLISHED FROM FASHION SQUARE COMMERCIAL PARK PLAT AS RECORDED IN LIBER 19, PAGES 37-40, SAGINAW COUNTY, RECORDS.

ACCORDING TO THE U.S DEPARTMENT OF HOUSE AND URBAN DEVELOPMENT NATIONAL FLOOD INSURANCE RATE MAPS, THE SUBJECT PROPERTY LIES WITHIN COMMUNITY PANEL 260190 0015 B, AN UNPRINTED PANEL AND IS DESIGNATED AS ZONE "C", AREA OF MINIMAL FLOODINGS.

**BENCHMARK:**

TOP OF NUT IN WORD "MUELLER" ON HYDRANT EAST SIDE TOWNE CENTRE, WEST OF HOTEL ELEV. 597.96

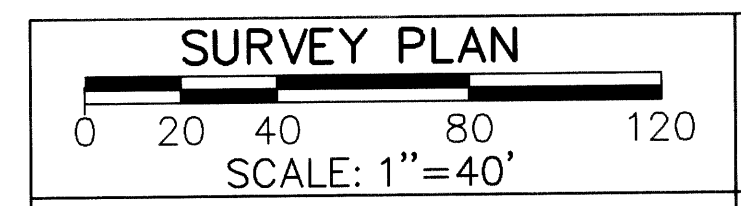
ARROW ON HYDRANT N.W. CORNER OF BARNARD & SCHUST ROADS ELEV. 602.00

**SURVEYOR'S CERTIFICATE**

I, RONALD C. PREVOST, PROFESSIONAL SURVEYOR OF THAT STATE OF MICHIGAN, HEREBY CERTIFY: THAT THE SUBDIVISION PLAN KNOWN AS MEDICAL ARTS I PROFESSIONAL OFFICE BUILDING CONDOMINIUM SUBDIVISION PLAN NO. AS SHOWN ON THE ACCOMPANYING DRAWINGS, REPRESENTS A SURVEY ON THE GROUND MADE UNDER MY DIRECTION, THAT THERE ARE NO EXISTING ENCROACHMENTS UPON THE LANDS AND PROPERTY HEREIN DESCRIBED. THAT THE REQUIRED MONUMENTS AND IRON MARKERS HAVE BEEN LOCATED IN THE GROUND AS REQUIRED BY RULES PROMULGATED UNDER SECTION 142 OF ACT NUMBER 59 OF THE PUBLIC ACTS OF 1978. THAT THE ACCURACY OF THIS SURVEY IS WITHIN THE LIMITS REQUIRED BY THE RULES PROMULGATED UNDER SECTION 142 OF ACT NUMBER 59 OF THE PUBLIC ACTS OF 1978. THAT THE BEARINGS AS SHOWN, ARE NOTED ON SURVEY PLAN AS REQUIRED BY THE RULES PROMULGATED UNDER SECTION 142 OF ACT NUMBER 59 OF THE PUBLIC ACTS OF 1978.

12-1-95  
DATE

*Ronald C. Prevost*  
RONALD C. PREVOST  
PROFESSIONAL SURVEYOR  
REGISTRATION NO. 24612  
SPICER ENGINEERING COMPANY  
1258 S. WASHINGTON AVENUE  
SAGINAW, MICHIGAN 48602



PREPARED BY:  
RONALD C. PREVOST  
PROFESSIONAL SURVEYOR

SPICER ENGINEERING COMPANY  
1258 S. WASHINGTON AVENUE  
SAGINAW, MICHIGAN 48601  
PHONE: (517) 754-4717

**MEDICAL ARTS I PROFESSIONAL OFFICE BUILDING CONDOMINIUM**

