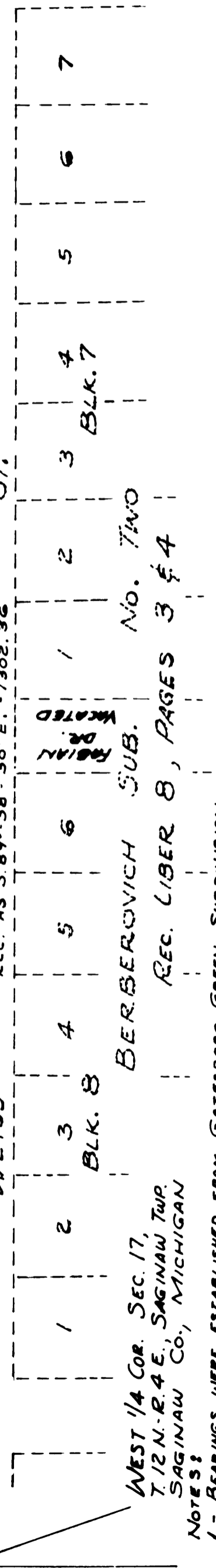
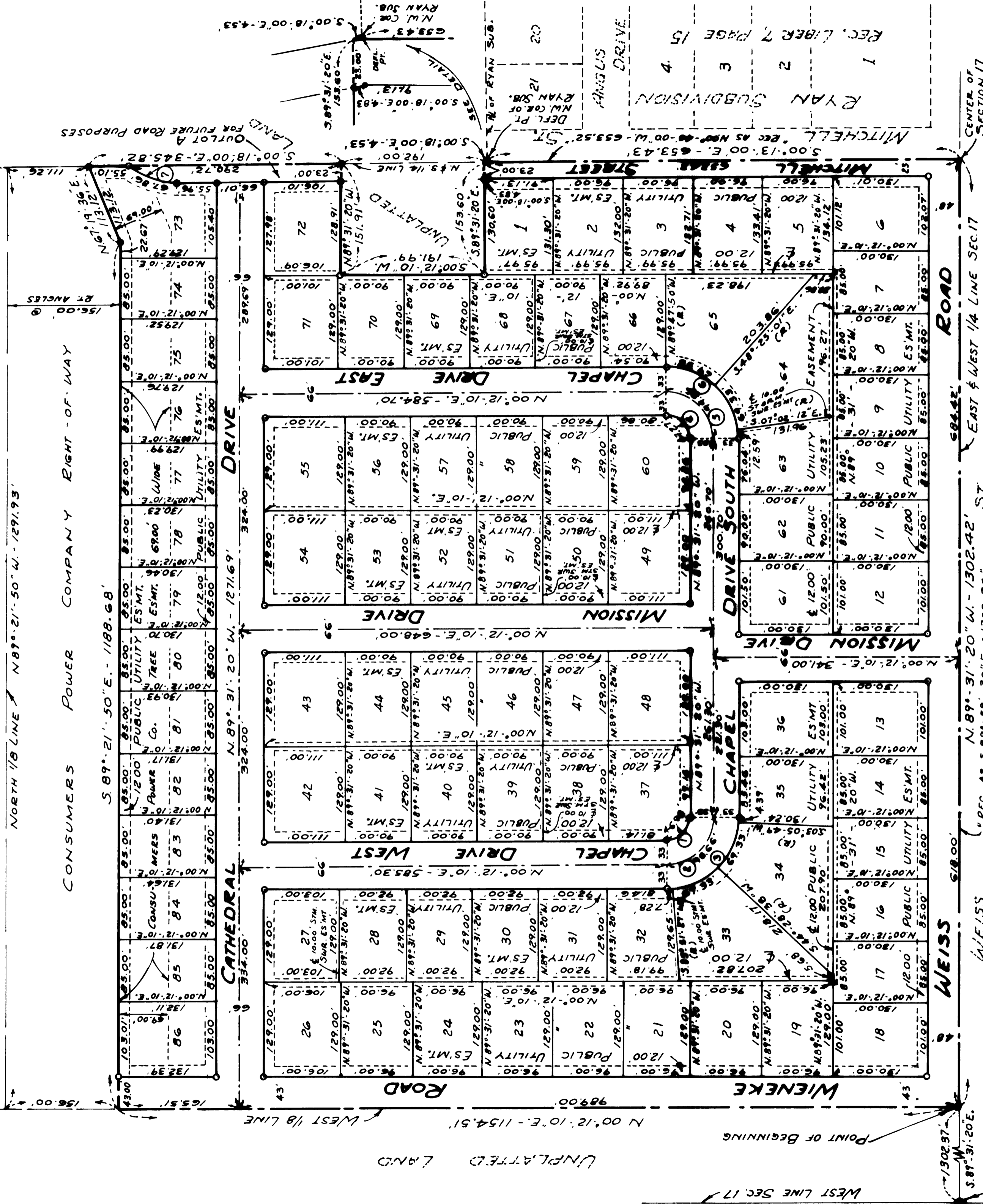


MISSION PARK

PART OF THE SOUTHEAST 1/4 OF THE NORTHWEST 1/4 OF SECTION 17, T.12N.-R.4E.
SAGINAW TOWNSHIP, SAGINAW COUNTY, MICHIGAN.



WEST 1/4 COR. SEC. 17,
T. 12 N.-R. 4 E., SAGINAW TWP.,
SAGINAW CO., MICHIGAN

BERBEROVICH SUB. NO. TWO
REC. LIBER 8, PAGES 3 & 4

- NOTES:
- 1 - BEARINGS WERE ESTABLISHED FROM GATESBORO GREEN SUBDIVISION, AS RECORDED IN LIBER 19, PAGES 41 AND 42
 - 2 - ALL DIMENSIONS ARE GIVEN IN FEET
 - 3 - ALL CURVILINEAR MEASUREMENTS ARE ARC DISTANCES
 - 4 - CONCRETE MONUMENTS HAVE BEEN PLACED AT ALL POINTS MARKED "O"
 - 5 - SET SOLID IRON BARS 1/2" DIA. BY 18" IN LENGTH AT ALL LOT CORNERS
 - 6 - (R) INDICATES A RADIAL LINE

PREPARED THIS PLAN BY

Allison Green
ALLISON GREEN
STATE TREASURER
By *Richard E. Lomax*
Richard E. Lomax, Prof. Examinor
Date *August 14, 1978*

BLK	DELTA ANGLE	RADIUS	ARC	CHORD	CHD. BEARING	TANGENT
1	89° 43' 30"	30.00'	46.98'	42.32'	N 44° 39' 35" W	29.86'
2	89° 43' 30"	63.00'	98.66'	88.88'	N 44° 39' 35" W	62.70'
3	89° 43' 30"	96.00'	150.33'	135.44'	N 44° 39' 35" W	95.54'
4	90° 16' 30"	30.00'	47.27'	42.53'	S 45° 20' 25" W	30.74'
5	90° 16' 30"	63.00'	99.26'	89.31'	S 45° 20' 25" W	63.30'
6	70° 16' 30"	96.00'	151.25'	136.09'	S 45° 20' 25" W	96.46'
7	40° 29' 57"	96.00'	67.86'	66.45'	S 19° 56' 58" W	35.42'

