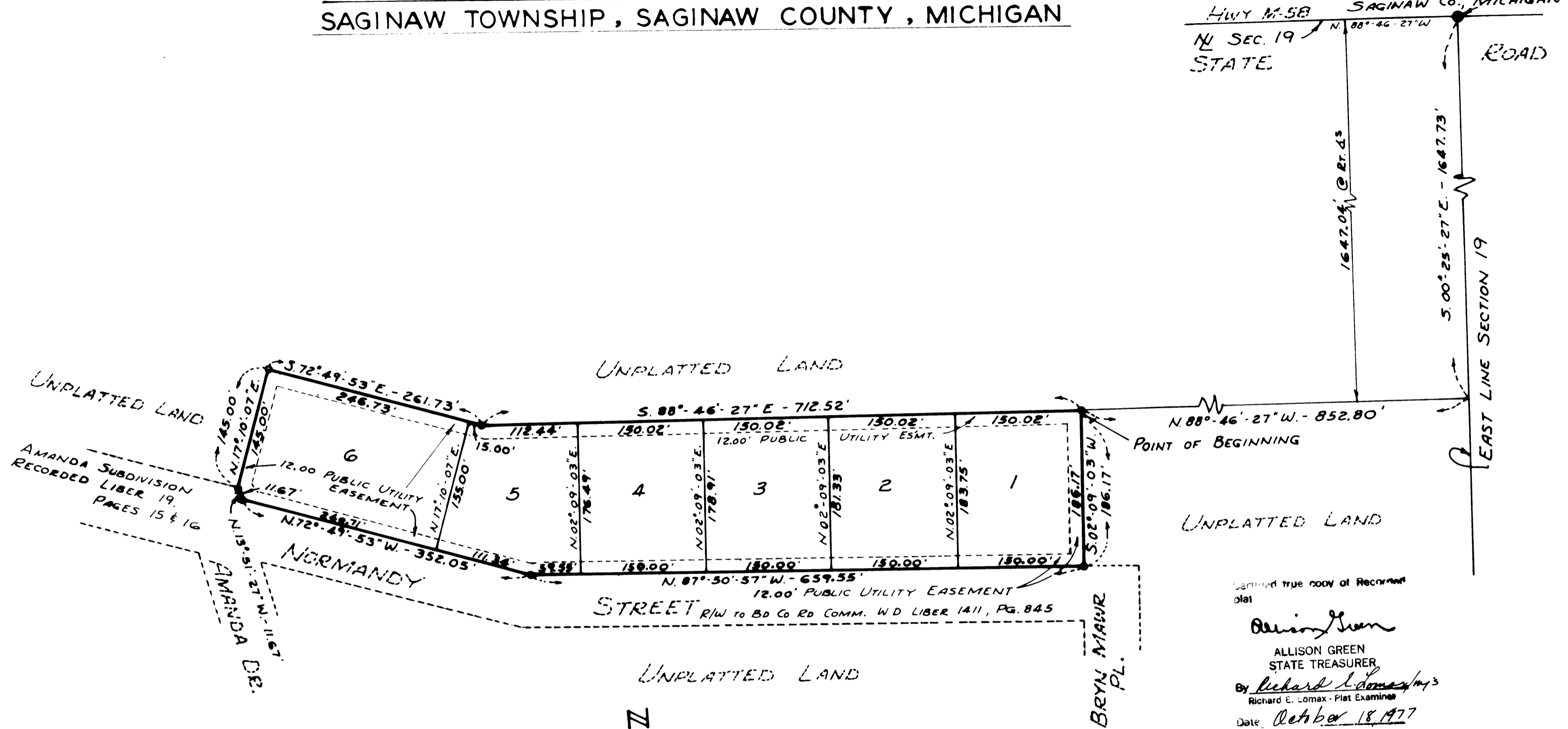


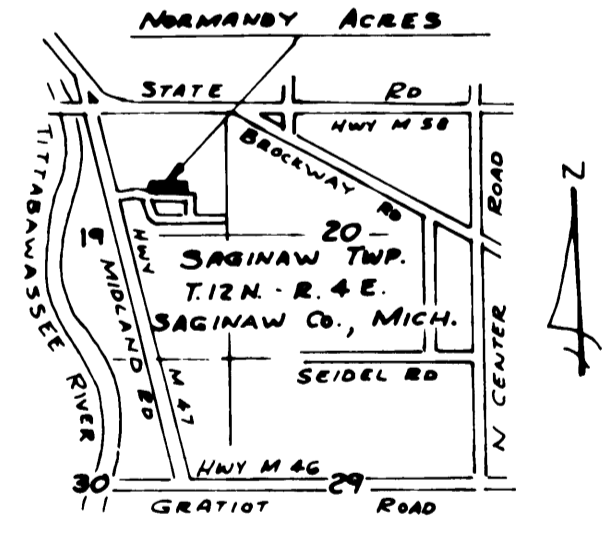
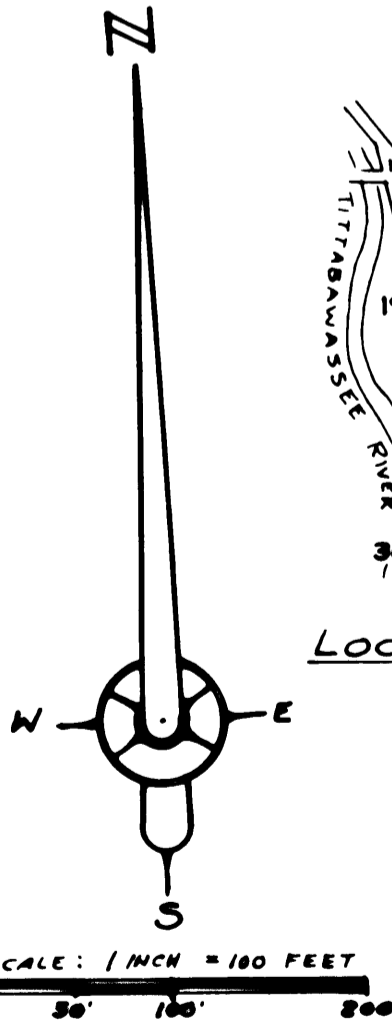
# NORMANDY ACRES

PART OF FRACTIONAL NORTH HALF OF SECTION 19, T.12N. - R.4E.  
SAGINAW TOWNSHIP, SAGINAW COUNTY, MICHIGAN

N.E. Cor. Sec. 19  
T.12 N. - R. 4 E.  
SAGINAW TOWNSHIP  
SAGINAW CO., MICHIGAN



Examined true copy of Record plat  
 Allison Green  
 ALLISON GREEN  
 STATE TREASURER  
 By Richard E. Lomax / R.E.L. / RLS  
 Richard E. Lomax - Plat Examiner  
 Date October 18, 1977



- 1 - ALL DIMENSIONS ARE GIVEN IN FEET
- 2 - CONCRETE MONUMENTS HAVE BEEN PLACED AT ALL POINTS MARKED "O"
- 3 - SET SOLID IRON BARS 1/2" DIA. BY 18" IN LENGTH AT ALL LOT CORNERS
- 4 - BEARINGS WERE ESTABLISHED FROM THE RECORDED PLAT OF AMANDA SUBDIVISION, LIBER 19, PAGES 15 AND 16.

