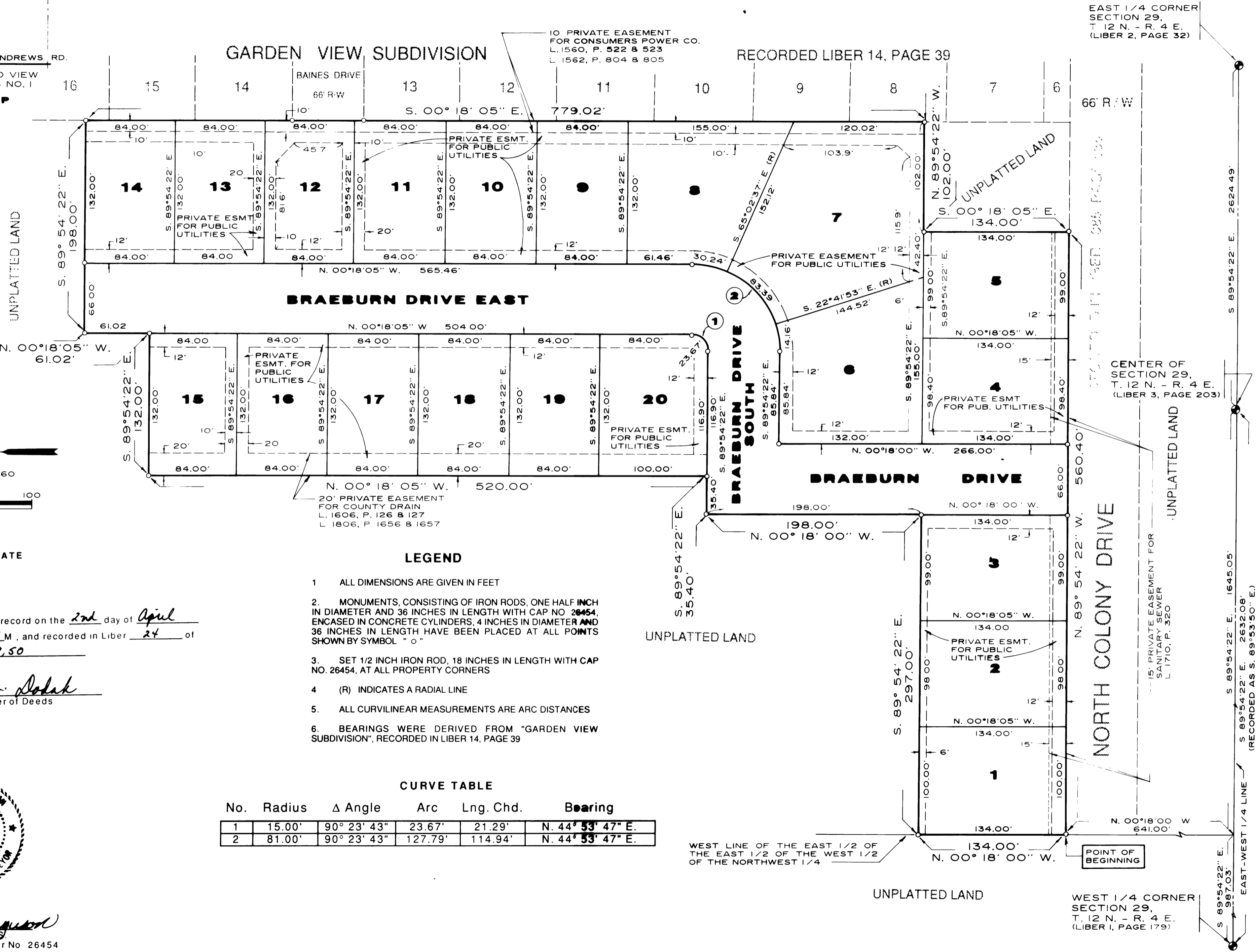
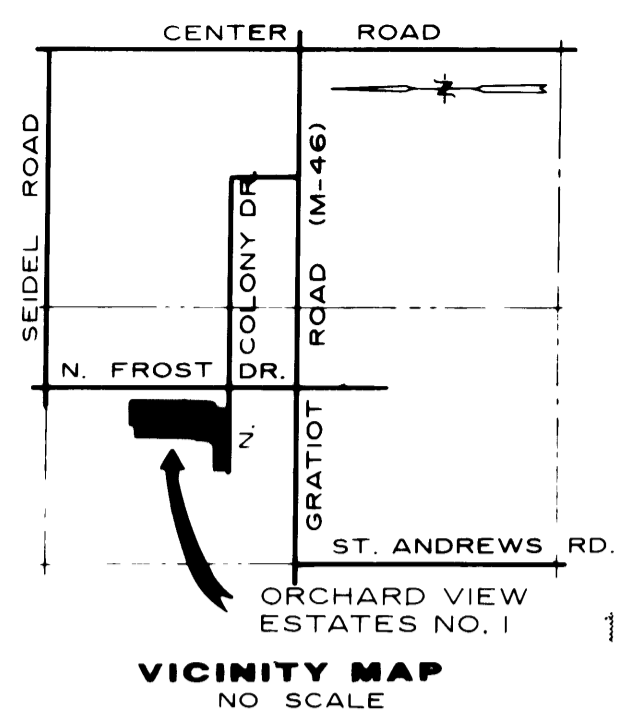


# ORCHARD VIEW ESTATES NO. 1

PART OF THE NW 1/4 OF SECTION 29, T.12N.-R.4E.  
SAGINAW TOWNSHIP, SAGINAW COUNTY, MICHIGAN



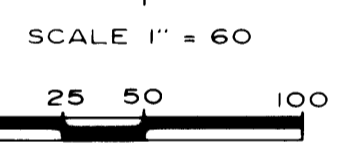
EAST 1/4 CORNER  
SECTION 29,  
T. 12 N. - R. 4 E.  
(LIBER 2, PAGE 32)

CENTER OF  
SECTION 29,  
T. 12 N. - R. 4 E.  
(LIBER 3, PAGE 203)

15' PRIVATE EASEMENT FOR  
SANITARY SEWER  
L. 1710, P. 320

POINT OF  
BEGINNING

WEST 1/4 CORNER  
SECTION 29,  
T. 12 N. - R. 4 E.  
(LIBER 1, PAGE 179)



**RECORDING CERTIFICATE**

State of Michigan }  
Saginaw County }

This plat was received for record on the 2nd day of April  
1992, at 9:00 A.M., and recorded in Liber 24 of  
Plats on Page(s) 48, 49, 50

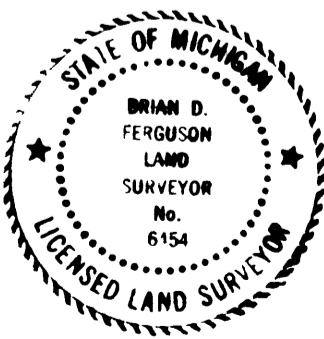
*Mildred M. Dodak*  
Mildred M. Dodak, Register of Deeds

**LEGEND**

- 1 ALL DIMENSIONS ARE GIVEN IN FEET
2. MONUMENTS, CONSISTING OF IRON RODS, ONE HALF INCH IN DIAMETER AND 36 INCHES IN LENGTH WITH CAP NO. 26454, ENCASED IN CONCRETE CYLINDERS, 4 INCHES IN DIAMETER AND 36 INCHES IN LENGTH HAVE BEEN PLACED AT ALL POINTS SHOWN BY SYMBOL "O"
3. SET 1/2 INCH IRON ROD, 18 INCHES IN LENGTH WITH CAP NO. 26454, AT ALL PROPERTY CORNERS
- 4 (R) INDICATES A RADIAL LINE
5. ALL CURVILINEAR MEASUREMENTS ARE ARC DISTANCES
6. BEARINGS WERE DERIVED FROM "GARDEN VIEW SUBDIVISION", RECORDED IN LIBER 14, PAGE 39

**CURVE TABLE**

No.	Radius	Δ Angle	Arc	Lng. Chd.	Bearing
1	15.00'	90° 23' 43"	23.67'	21.29'	N. 44° 53' 47" E.
2	81.00'	90° 23' 43"	127.79'	114.94'	N. 44° 53' 47" E.



*Brian D. Ferguson*  
Brian D. Ferguson, L.L.S.  
Licensed Land Surveyor No. 26454

WEST LINE OF THE EAST 1/2 OF  
THE EAST 1/2 OF THE WEST 1/2  
OF THE NORTHWEST 1/4