

PILGRIM HILLS SOUTH

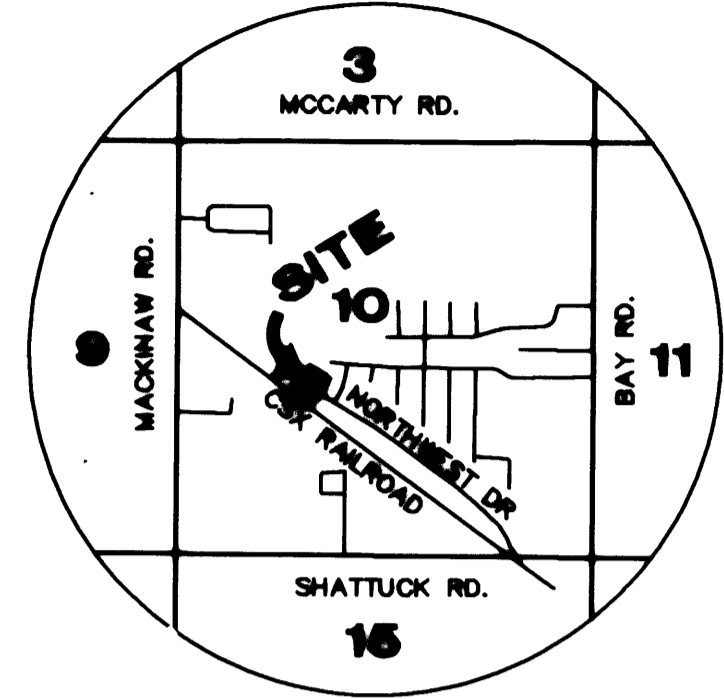
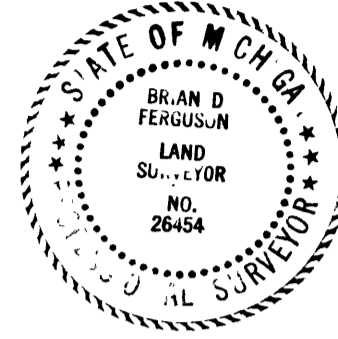
PART OF THE SW 1/4 OF SECTION 10, T12N-R4E
SAGINAW TOWNSHIP, SAGINAW COUNTY, MICHIGAN

NW CORNER
SECTION 10, T12N-R4E
LCRC L. 6, PG. 154

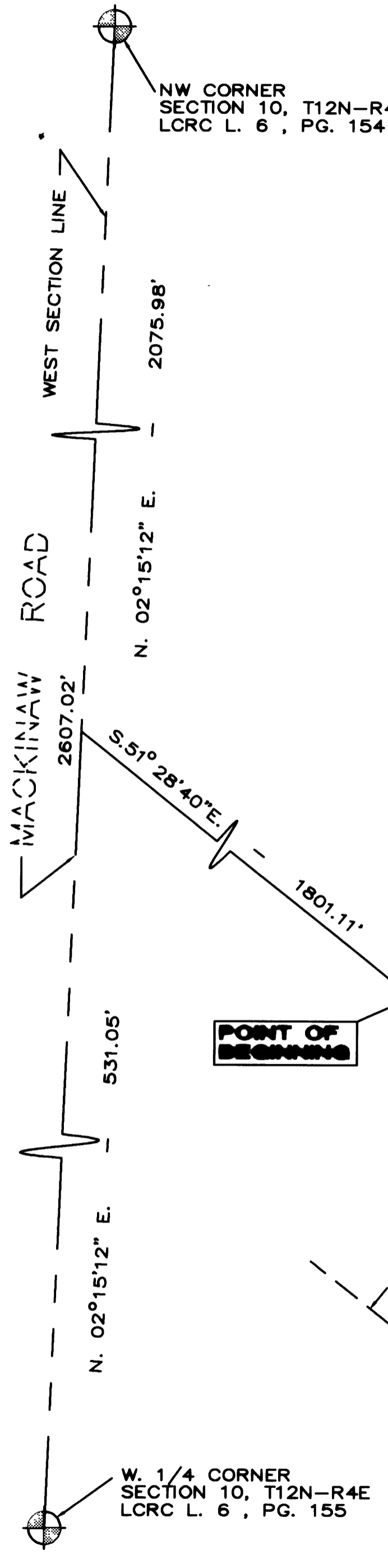
LEGEND

1. ALL DIMENSIONS ARE IN FEET.
2. MONUMENTS, CONSISTING OF STEEL RODS, ONE HALF INCH IN DIAMETER AND 36 INCHES IN LENGTH WITH CAP No. 26454, ENCASED IN CONCRETE CYLINDERS, 4 INCHES IN DIAMETER AND 36 INCHES IN LENGTH, HAVE BEEN PLACED AT ALL POINTS SHOWN BY SYMBOL "O".
3. SET 1/2 INCH DIAMETER STEEL ROD, 18 INCHES IN LENGTH WITH CAP NO. 26454, AT ALL LOT CORNERS.
4. (NR) INDICATES NON-RADIAL LINE (R) = RADIAL LINE
5. BEARINGS AS SHOWN ARE REFERENCED TO EDWARD MEYER & SON PLAT NUMBER THREE RECORDED IN LIBER 17 OF PLATS PAGE 14
6. ALL CURVILINEAR DIMENSIONS ARE ARC LENGTHS.

Brian D. Ferguson
BRIAN D. FERGUSON, P.L.S.



LOCATION MAP
NO SCALE



POINT OF BEGINNING

W. 1/4 CORNER
SECTION 10, T12N-R4E
LCRC L. 6, PG. 155

