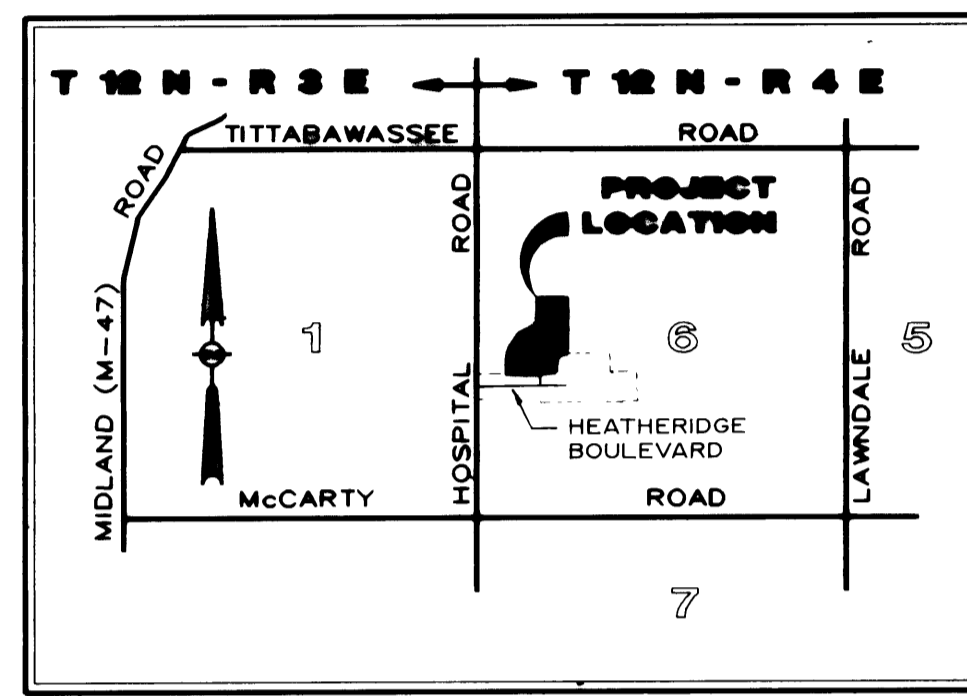
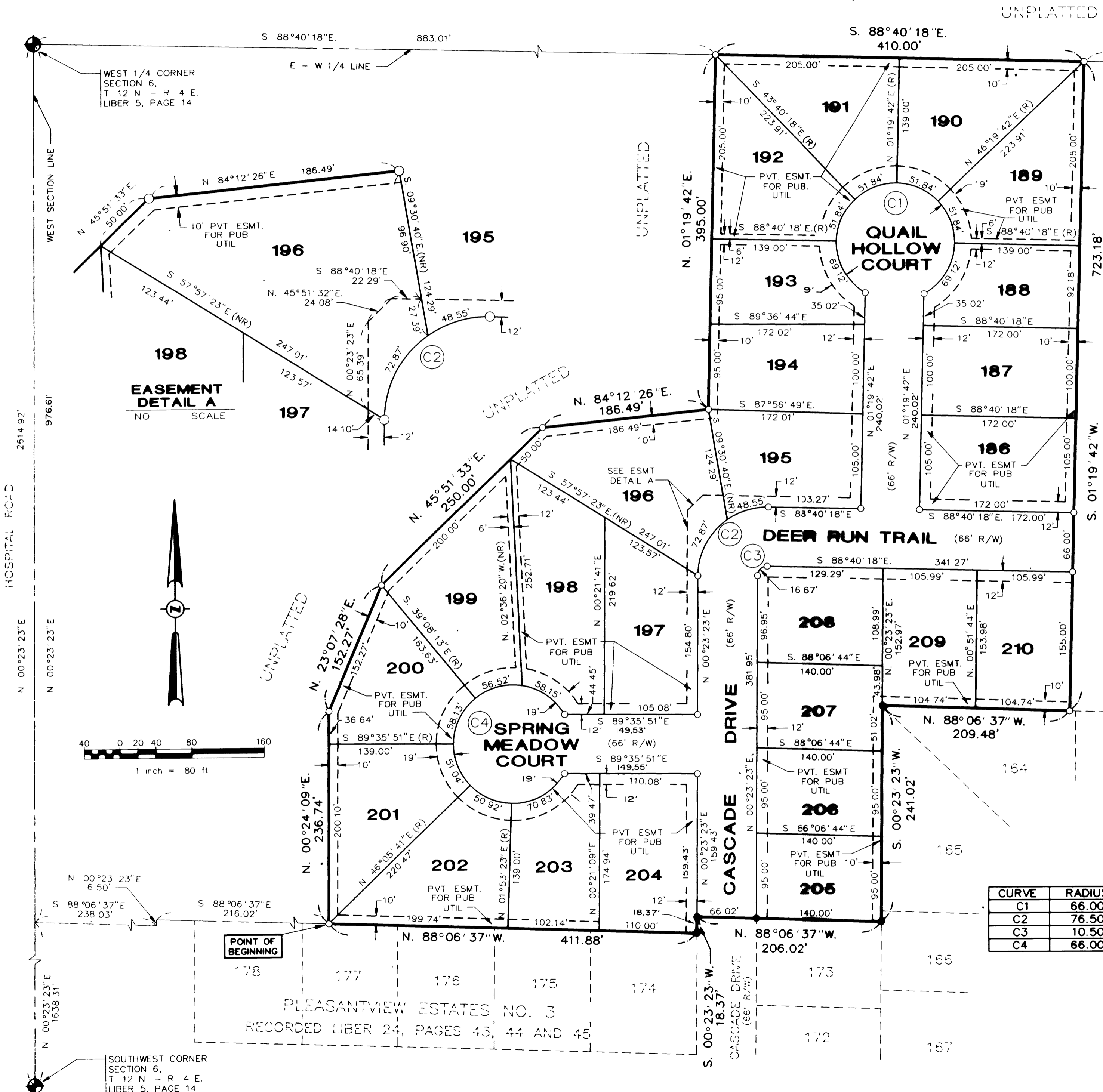


# PLEASANTVIEW ESTATES NO. 4

PART OF THE SW 1/4 OF FRACTIONAL SECTION 6, T.12N.-R.4E.  
SAGINAW TOWNSHIP, SAGINAW COUNTY, MICHIGAN

CENTER SECTION 6,  
T. 12 N - R. 4 E  
LIBER 5, PAGE 14

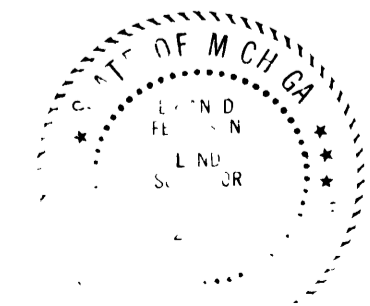


**LEGEND**

- ALL DIMENSIONS ARE IN FEET.
- MONUMENTS, CONSISTING OF IRON RODS, ONE HALF INCH IN DIAMETER AND 36 INCHES IN LENGTH WITH CAP No. 26454, ENCASED IN CONCRETE CYLINDERS, 4 INCHES IN DIAMETER AND 36 INCHES IN LENGTH, HAVE BEEN PLACED AT ALL POINTS SHOWN BY SYMBOL "O".
- SET 1/2 INCH IRON ROD, 18 INCHES IN LENGTH WITH CAP No. 26454, AT ALL LOT CORNERS, EXCEPT AS NOTED.
- (NR) INDICATES NON-RADIAL LINE  
(R) INDICATES RADIAL LINE
- BEARINGS WERE DERIVED FROM "PLEASANTVIEW ESTATES NO. 3," RECORDED IN LIBER 24 OF PLATS, PAGES 43, 44 AND 45, SAGINAW COUNTY RECORDS.
- "O" INDICATES FOUND CONCRETE MONUMENT
- ALL CURVILINEAR MEASUREMENTS ARE ARC DISTANCES

**CURVE DATA**

CURVE	RADIUS	LENGTH	TANGENT	CHORD	BEARING	DELTA
C1	66.00'	345.60'	38.10'	66.00'	N 88°40'18" W	307°47'32"
C2	76.50'	121.42'	77.76'	109.07'	S 45°51'33" W	90°56'19"
C3	10.50'	16.67'	10.67'	14.97'	S 45°51'33" W	90°56'19"
C4	66.00'	345.59'	38.10'	66.00'	S 00°24'09" W	307°47'32"



*Brian D. Ferguson*  
Brian D. Ferguson, P.S.  
No. 26454