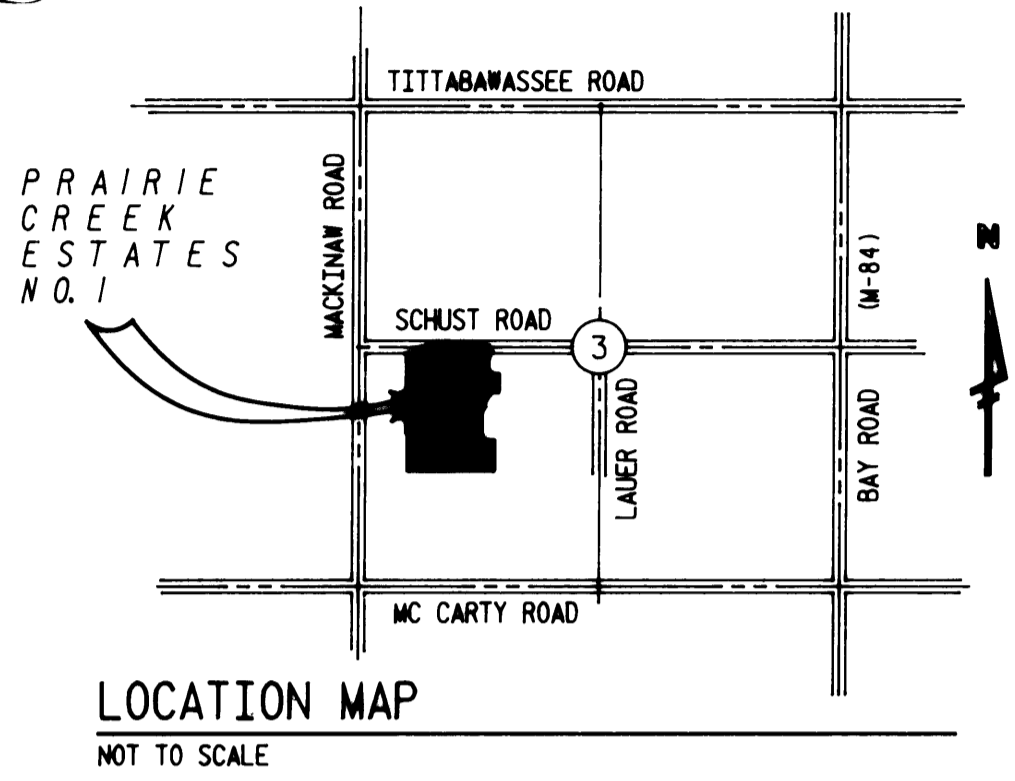
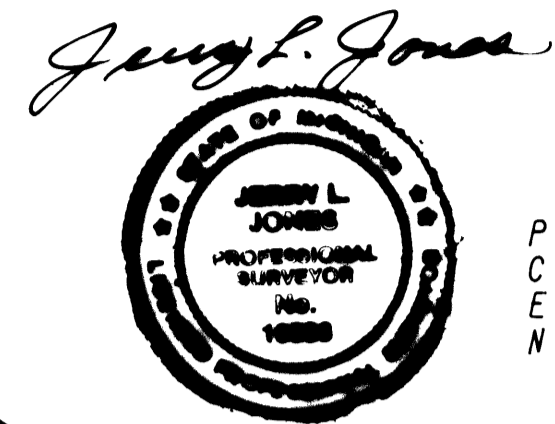
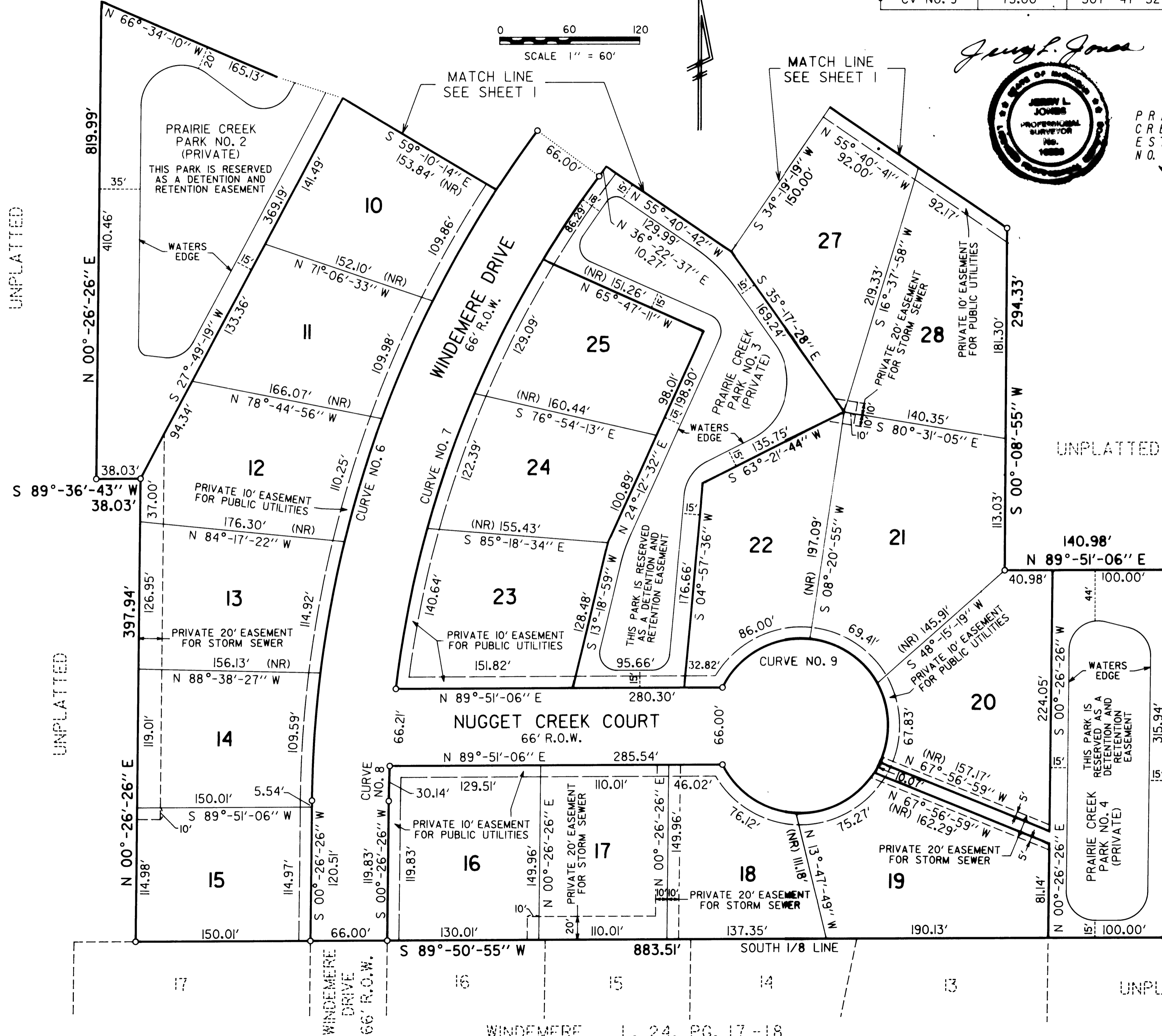


# PRAIRIE CREEK ESTATES NO. 1

PART OF THE NORTH 1/2 OF THE SOUTHWEST 1/4 OF  
 FRACTIONAL SECTION 3, T12N-R4E,  
 SAGINAW TOWNSHIP, SAGINAW COUNTY, MICHIGAN

CURVE DATA					
CURVE NO.	RADIUS	CENTRAL ANGLE	TANGENT	BEARING	CHORD
CV NO. 6	983.00'	35°-56'-10"	318.79'	S 18°-24'-32" W	606.48'
CV NO. 7	917.00'	29°-54'-53"	244.98'	N 21°-25'-10" E	473.36'
CV NO. 8	917.00'	01°-53'-01"	15.07'	N 01°-22'-57" E	30.14'
CV NO. 9	75.00'	307°-47'-32"	—	N 00°-08'-54" W	66.00'



- \*\*\* LEGEND \*\*\*
- ALL DIMENSIONS ARE IN FEET.
  - ALL CURVE DIMENSIONS ARE CHORD DIMENSIONS.
  - CONCRETE MONUMENTS, BEING A 1/2 INCH ROD, 36 INCHES LONG, COMPLETELY ENCASED IN CONCRETE, 4 INCHES IN DIAMETER, HAVE BEEN PLACED AT ALL POINTS MARKED "O".
  - LOT CORNERS HAVE BEEN MARKED WITH A 3/4 INCH PIPE, 18 INCHES LONG, W/PLASTIC CAP STAMPED "AYRES 1983".
  - BEARINGS WERE ESTABLISHED FROM THE PLAT OF WIDEMERE, RECORDED IN LIBER 24, ON PAGES 17 - 18.
  - (R) DENOTES A RADIAL LINE.
  - (NR) DENOTES A NON-RADIAL LINE.

