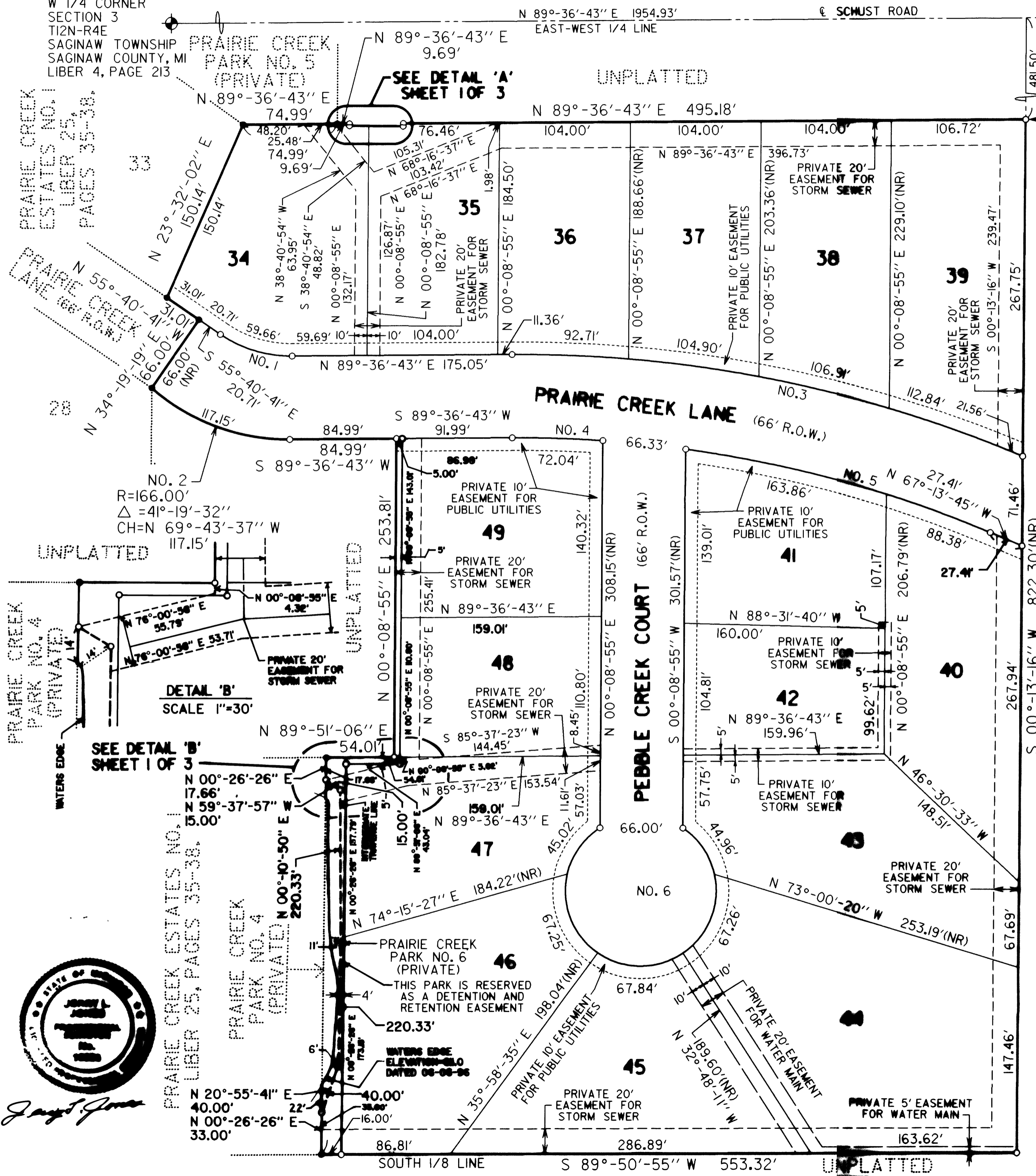
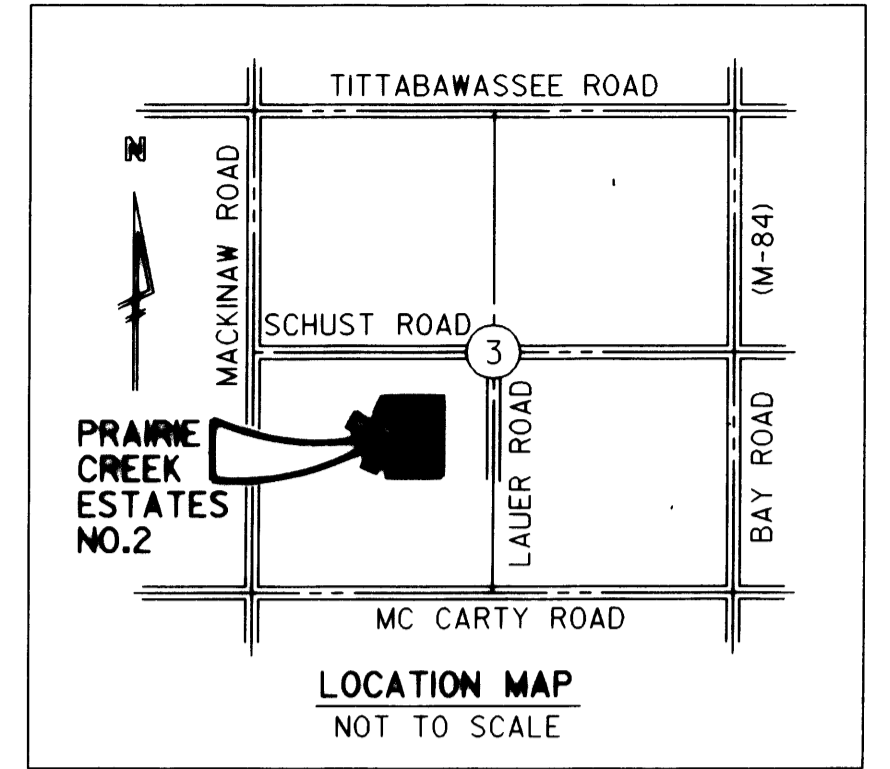


PRAIRIE CREEK ESTATES NO. 2

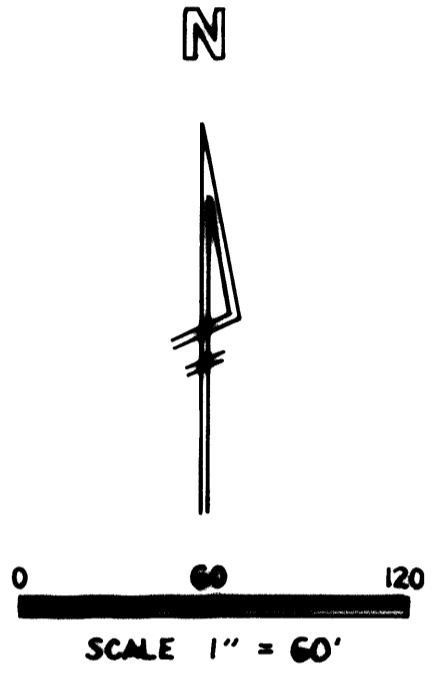
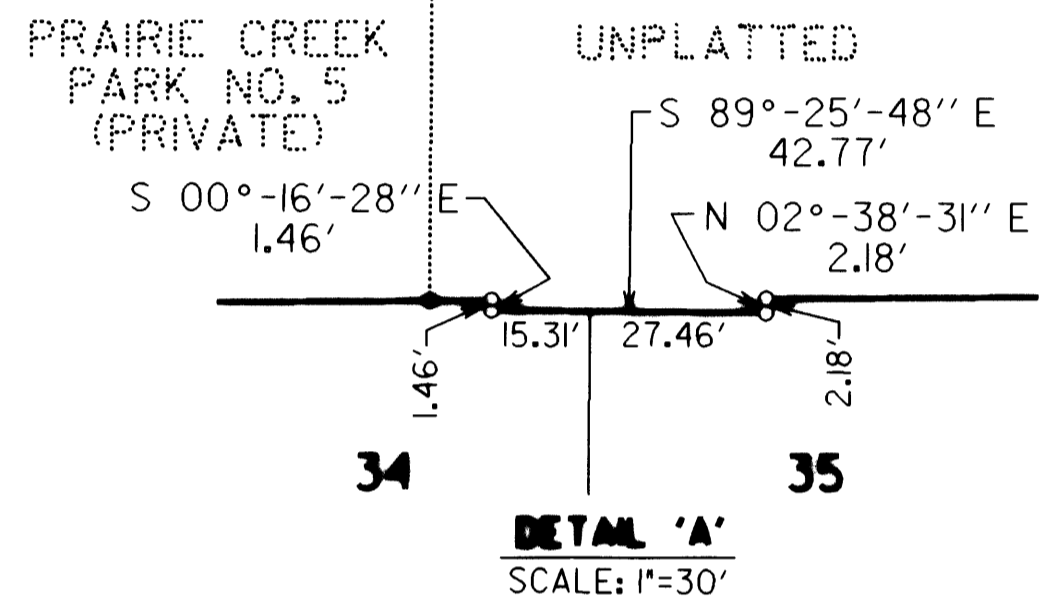
PART OF THE NORTH 1/2 OF THE SOUTHWEST 1/4 OF FRACTIONAL SECTION 3, T12N-R4E, SAGINAW TOWNSHIP, SAGINAW COUNTY, MICHIGAN

CENTER OF SECTION 3
T12N-R4E
SAGINAW TOWNSHIP
SAGINAW COUNTY, MI
LIBER 2, PAGE 175
LIBER 4, PAGE 180

W 1/4 CORNER
SECTION 3
T12N-R4E
SAGINAW TOWNSHIP
SAGINAW COUNTY, MI
LIBER 4, PAGE 213



POINT OF BEGINNING
N 89°-36'-43'' E, 1954.93'
AND S 00°-13'-16'' W,
481.50' FROM THE
WEST 1/4 CORNER,
SECTION 3, T12N-R4E.



| CURVE DATA | | | | | |
|------------|----------|---------------|---------|------------------|---------|
| CURVE NO. | RADIUS | CENTRAL ANGLE | TANGENT | BEARING | CHORD |
| NO. 1 | 100.00' | 34°-42'-36'' | 31.25' | S 73°-01'-59'' E | 59.66' |
| NO. 2 | 166.00' | 4°-19'-32'' | 62.60' | N 69°-43'-37'' W | 117.15' |
| NO. 3 | 1033.00' | 23°-09'-32'' | 211.66' | S 78°-48'-31'' E | 414.70' |
| NO. 4 | 967.00' | 4°-16'-10'' | 36.05' | N 88°-15'-12'' W | 72.04' |
| NO. 5 | 967.00' | 14°-57'-31'' | 126.95' | N 74°-42'-31'' W | 251.74' |
| NO. 6 | 60.00' | 293°-15'-58'' | ----- | N 89°-51'-05'' W | 66.00' |

*** LEGEND ***

- ALL DIMENSIONS ARE IN FEET.
- ALL CURVE DIMENSIONS ARE CHORD DIMENSIONS.
- CONCRETE MONUMENTS, BEING A 1/2 INCH STEEL ROD, 36 INCHES LONG, COMPLETELY ENCASED IN CONCRETE, 4 INCHES IN DIAMETER, HAVE BEEN PLACED AT ALL POINTS MARKED 'o'.
- LOT CORNERS HAVE BEEN MARKED WITH A 3/4 INCH STEEL PIPE, 18 INCHES LONG, W/PLASTIC CAP STAMPED 'AYRES 19838'.
- BEARINGS WERE ESTABLISHED FROM THE PLAT OF PRAIRIE CREEK ESTATES NO. 1 RECORDED IN LIBER 25, ON PAGES 35-38.
- (R) DENOTES A RADIAL LINE.
- (NR) DENOTES A NON-RADIAL LINE.
- FOUND MONUMENT MARKED 'o'. SAME AS IN ITEM 3 ABOVE.

RECORDING CERTIFICATE
STATE OF MICHIGAN)
SAGINAW COUNTY)
THIS PLAT WAS RECEIVED FOR RECORD ON
THE 27th DAY OF January, 1987
AT 10:05 P.M. AND RECORDED IN
LIBER 27 OF PLATS ON PAGES 47, 48 AND 49
Mildred Dodak
MILDRED DODAK, REGISTER OF DEEDS



James J. Jones