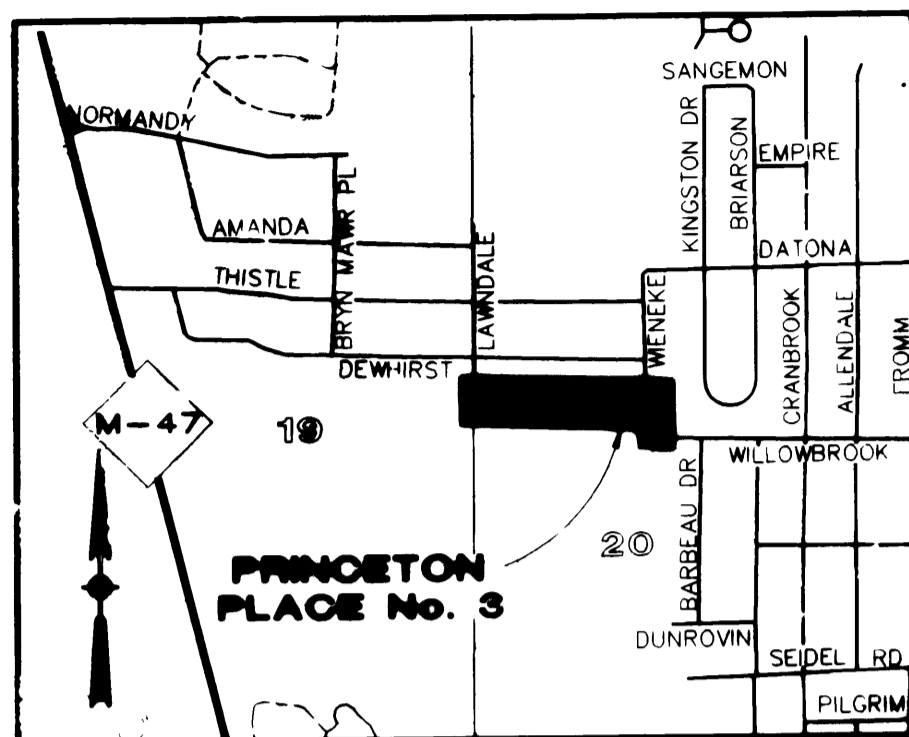


PRINCETON PLACE NO. 3

Part of the SE 1/4 OF SECTION 19 AND THE SW 1/4 OF SECTION 20;
T12N-R4E, Saginaw Township, Saginaw County, Michigan

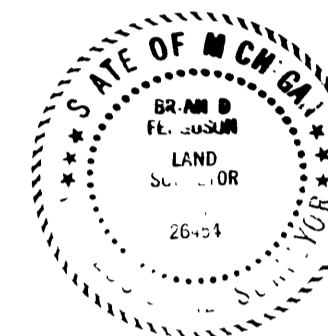


VICINITY MAP
NOT TO SCALE

LEGEND

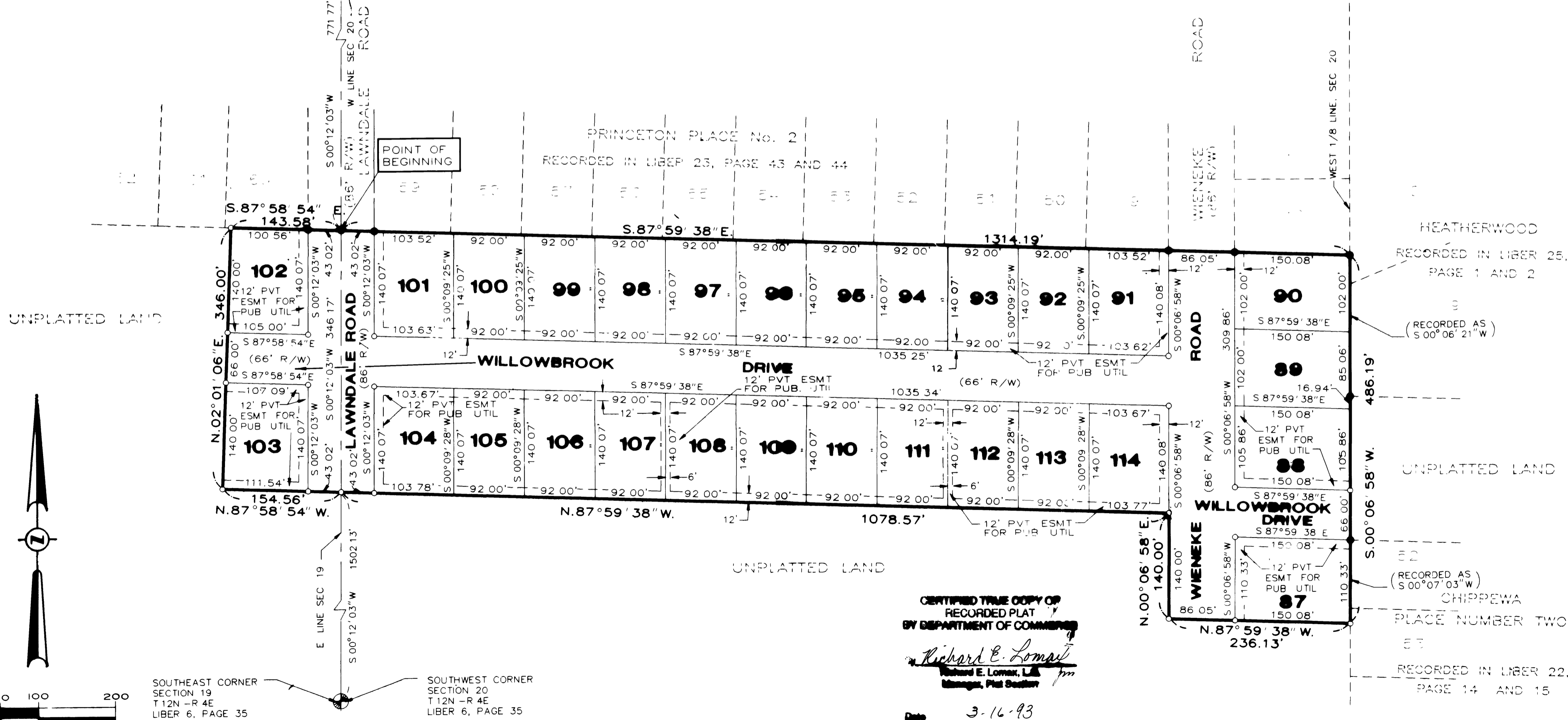
1. ALL DIMENSIONS ARE IN FEET.
2. MONUMENTS, CONSISTING OF IRON RODS, ONE HALF INCH IN DIAMETER AND 36 INCHES IN LENGTH WITH CAP No. 26454, ENCASED IN CONCRETE CYLINDERS, 4 INCHES IN DIAMETER AND 36 INCHES IN LENGTH, HAVE BEEN PLACED AT ALL POINTS SHOWN BY SYMBOL "O".
3. SET 1/2 INCH IRON ROD, 18 INCHES IN LENGTH WITH CAP No. 26454, AT ALL LOT CORNERS, EXCEPT AS NOTED.
4. (NR) INDICATES NON-RADIAL LINE
(R) INDICATES RADIAL LINE
5. BEARINGS WERE DERIVED FROM "PRINCETON PLACE #2" RECORDED IN LIBER 23 OF PLATS, PAGES 43 AND 44, SAGINAW COUNTY RECORDS.
6. ● INDICATES FOUND CONCRETE MONUMENT.

Brian D Ferguson
 Brian D Ferguson
 L.L.S. No. 26454



EAST 1/4 CORNER SECTION 19
 T12N-R4E
 LIBER 3, PAGE 175

WEST 1/4 CORNER SECTION 20
 T12N-R4E
 LIBER 3, PAGE 175



CERTIFIED TRUE COPY OF
 RECORDED PLAT
 BY DEPARTMENT OF COMMERCE

Richard E. Lomas
 Richard E. Lomas, L.L.S.
 Manager, Plat Section

Date 3-16-93

SOUTHEAST CORNER SECTION 19
 T12N-R4E
 LIBER 6, PAGE 35

SOUTHWEST CORNER SECTION 20
 T12N-R4E
 LIBER 6, PAGE 35

SCALE: 1" = 100'