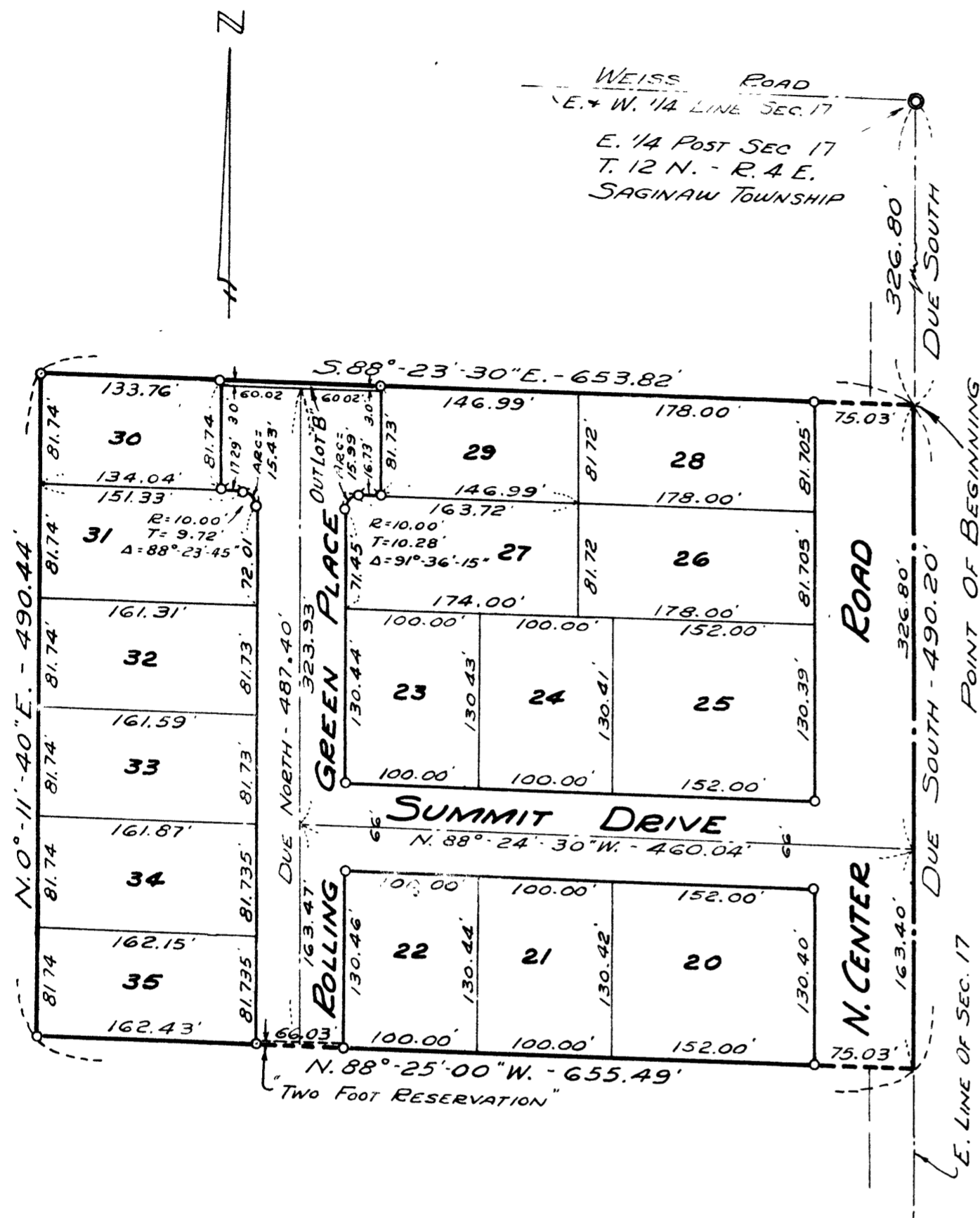


ROLLING GREEN PLAT No. TWO

A PART OF THE E. 1/2 OF N.E. 1/4 OF S.E. 1/4 SECTION 17, T.12N.-R.4E.
SAGINAW TOWNSHIP - SAGINAW COUNTY - MICHIGAN.

SCALE: 1 INCH = 100 FEET
0 50 100 200 300 400
ALL DIMENSIONS ARE GIVEN IN FEET AND DECIMALS THEREOF
THE SPICER ENGINEERING COMPANY
SAGINAW, MICHIGAN
1956



COPY
Register's Office
Saginaw County
Plat of Rolling Green
Plat No. Two
was Recorded this 13th day of
May A.D. 1957 at 10:00 o'clock
P.M. in Liber 10 Plat
on page 49
Clara P. Turck
ORIGINAL FILE

I hereby certify that this
or plat recorded the
recording.
Date May 10, 1957
FILED IN REGISTER GENERAL'S DEPT
Date May 15, 1957
LAWYER AND APPROVED
Date May 10, 1957
Frank St. James
Auditor General
By D. L. Mac Scroy
Plat No.

DEDICATION

KNOW ALL MEN BY THESE PRESENTS, That we, Jacob Miller and Emma Miller, his wife; William G. Ruthig and Louise W. Ruthig, his wife; and Marie Trier, a widow, as proprietors, have caused the land embraced in the annexed plat to be surveyed, laid out and platted to be known as ROLLING GREEN PLAT NO. TWO, A Part Of The E. 1/2 Of N.E. 1/4 Of S.E. 1/4, Section 17, T.12 N.-R.4 E., Saginaw Township, Saginaw County, Michigan, and that the Road, Drive and Place as shown on said plat are hereby dedicated to the use of the public, Excepting however, from this dedication land designated "Two Foot Reservation," such land to be dedicated automatically for street purposes at such time as street extensions adjacent thereto are dedicated in adjoining property.

Jacob Miller (L.S.)
Emma Miller (L.S.)
William G. Ruthig (L.S.)
Louise W. Ruthig (L.S.)
Marie Trier (L.S.)

Signed and Sealed in the Presence of)
Estelle M. Bryan
C.H. Spicer

ACKNOWLEDGMENT

STATE OF MICHIGAN) ss.
County of Saginaw)
On this 3rd day of December, 1956, before me, a Notary Public, in and for said County, personally came the above named Jacob Miller and Emma Miller, his wife; William G. Ruthig and Louise W. Ruthig, his wife and Marie Trier, a widow, known to me to be the persons who executed the above dedication and acknowledged the same to be their free act and deed.
Estelle M. Bryan
Notary Public, Saginaw County, Michigan
My Commission Expires May 16, 1958

DESCRIPTION

The land embraced in the annexed plat of ROLLING GREEN PLAT NO. TWO, A Part Of The E. 1/2 Of N.E. 1/4 Of S.E. 1/4, Section 17, T.12 N.-R.4 E., Saginaw Township, Saginaw County, Michigan, is described as follows: Commencing at a point on the East line of said Section 17, 326.80 feet Due South from the East 1/4 post of said Section; thence Due South along said Section line 490.20 feet; thence N.88°-25'-00"W., 655.49 feet; thence N.00°-11'-40"E., 490.44 feet; thence S.88°-23'-30"E., 653.82 feet to the point of beginning. This plat includes 16 lots numbered consecutively from 20 to 35 inclusive, and one Outlot designated as Outlot "B"

SURVEYOR'S CERTIFICATE

I hereby certify that the plat hereon delineated is a correct one and that permanent metal monuments consisting of bars not less than one-half inch in diameter and 36 inches in length, or shorter bars of not less than one-half inch in diameter lapped over each other at least 6 inches with an over-all length of not less than 36 inches, encased in a concrete cylinder at least 4 inches in diameter and 36 inches in depth have been placed at points marked thus o as thereon shown at all angles in the boundaries of the land platted, at all intersections of streets, and at the intersections of streets with the boundaries of the plat as shown on said plat.
Clifford H. Spicer - Registered Land Surveyor

COUNTY TREASURER'S CERTIFICATE RELATING TO TAXES
(Sec. 135, Act 206, 1893 as amended - Sec. 4134, C. L. 1915.)
Office of County Treasurer, Saginaw County

I hereby certify, that there are no tax liens or titles held by the State on the land described hereon, and that there are no tax liens or titles held by individuals on said lands, for the five years preceding the 24th day of January, 1957, and that the taxes for said period of five years are all paid, as shown by the records of this office.

This certificate does not apply to taxes, if any, now in process of collection by township, city or village collecting officers.
Carl O. Little - County Treasurer

CERTIFICATE OF MUNICIPAL APPROVAL

This plat was approved by the Township Board of the Township of Saginaw at a meeting held the 7th day of February 1957.
Walter Dietzel - Township Clerk

CERTIFICATE OF APPROVAL BY CITY PLANNING COMMISSION

This plat was approved by the City Planning Commission of the City of Saginaw, Michigan, at a meeting held the 25th day of September 1956.
Russel O. Koenig - Director

CERTIFICATE OF APPROVAL BY BOARD OF COUNTY ROAD COMMISSIONERS

This plat has been examined and was approved on the 24th day of DECEMBER 1956 by the Saginaw County Board of Road Commissioners.
The Board of County Road Commissioners of Saginaw County, Michigan, assume no responsibility for the improvement or maintenance of the Roads or Streets shown on this Plat until such time as the following conditions have been met and approved by this Board.
All Roads and Streets are to be graded and drained with necessary drainage structures installed and a roadway surface, which shall consist of crushed stone or natural gravel conforming to Michigan State Highway Department Specifications 21A. The surface shall have a minimum width of 18 feet and a compacted thickness of 6 inches. When crushed stone is used the top 2 inches shall be 21A with screenings added to provide a dense wearing course.

Albert M. Wille - Chairman
William M. Irwin - Member
Frank Dudewicz - Member

CERTIFICATE OF APPROVAL BY THE COUNTY PLAT BOARD

This plat was approved by the County Plat Board of Saginaw County, Michigan, this 8th day of February 1957.
Clara P. Turck, Register of Deeds - Chairman
Peter Girard - Auditor
William A. Case - Auditor
John H. Deibel - Auditor