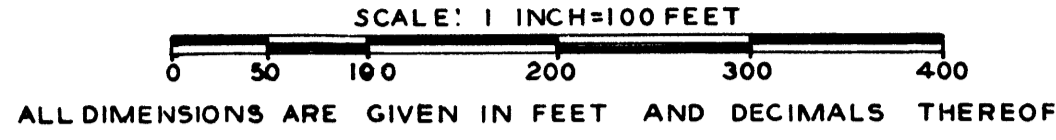


# SHEFFIELD PLACE

SECTION 28 - TOWNSHIP 12 NORTH - RANGE 4 EAST

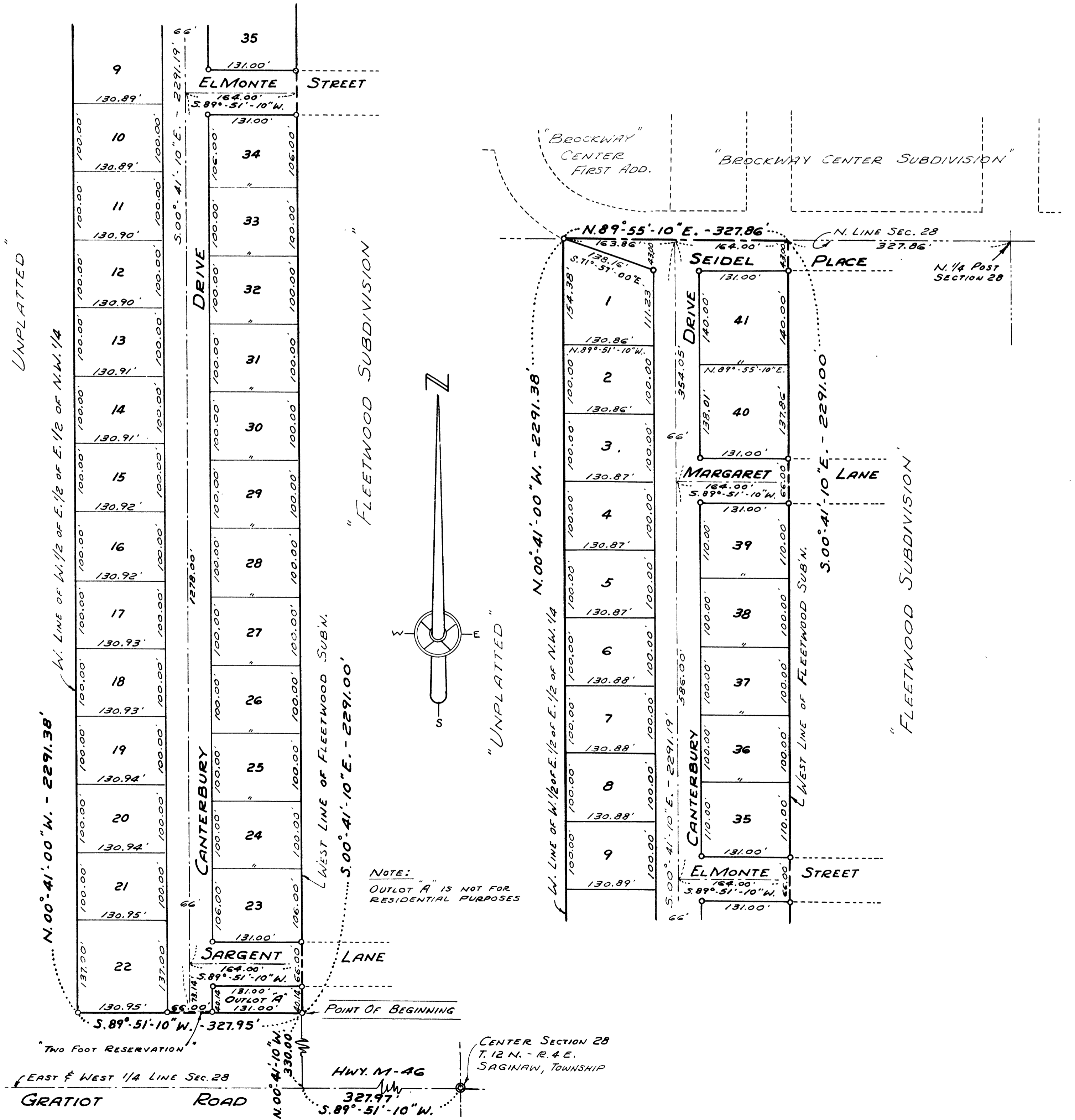
SAGINAW TOWNSHIP - SAGINAW COUNTY - MICHIGAN.



SPICER ENGINEERING COMPANY  
SAGINAW, MICHIGAN  
1965

Register's Office  
Saginaw County } S. S.  
Plat of Sheffield Place  
was Recorded this 21 day  
Jan A. D., 1966 at 5 O'clock  
P. M. in Liber 15 of 46 Plate  
on Page 2472  
Richard E. Spicer  
Plat Examiner

COPY  
Register's Office  
Saginaw County } S. S.  
Plat of Sheffield Place  
was Recorded this 21 day  
Jan A. D., 1966 at 5 O'clock  
P. M. in Liber 15 of 46 Plate  
on Page 2472  
Richard E. Spicer  
Plat Examiner



NOTE:  
OUTLOT 'A' IS NOT FOR  
RESIDENTIAL PURPOSES

CENTER SECTION 28  
T. 12 N. - R. 4 E.  
SAGINAW, TOWNSHIP