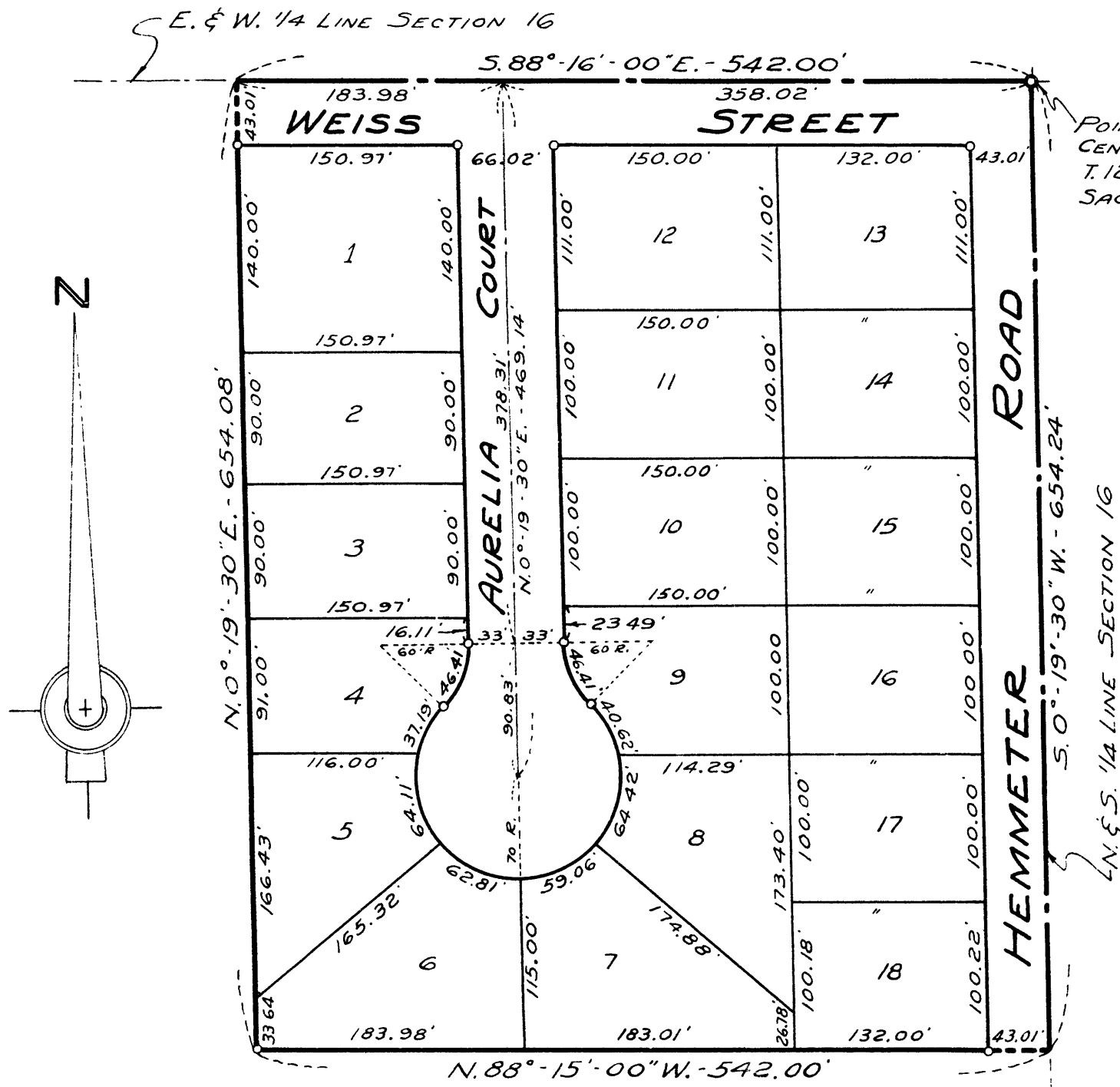


# SHIELDS PLAT

A PART OF N. 1/2 OF N.E. 1/4 OF S.W. 1/4 SECTION 16, T.12 N.-R.4 E.  
SAGINAW TOWNSHIP, SAGINAW COUNTY, MICHIGAN

SCALE: 1 INCH = 100 FEET  
0 50 100 200 300 400  
ALL DIMENSIONS ARE GIVEN IN FEET AND DECIMALS THEREOF  
THE SPICER ENGINEERING COMPANY  
SAGINAW, MICHIGAN  
1955



POINT OF BEGINNING  
CENTER OF SECTION 16  
T.12 N. - R.4 E.  
SAGINAW TOWNSHIP

### DESCRIPTION

The land embraced in the annexed plat of SHIELDS PLAT, A Part Of N. 1/2 Of N.E. 1/4 Of S.W. 1/4, Section 16, T.12 N.-R.4 E., Saginaw Township, Saginaw County, Michigan, is described as follows: Commencing at the center of said Section 16, thence S.00°-19'-30\"/>

### SURVEYOR'S CERTIFICATE

I hereby certify that the plat hereon delineated is a correct one and that permanent metal monuments consisting of bars not less than one-half inch in diameter and 36 inches in length, or shorter bars of not less than one-half inch in diameter lapped over each other at least 6 inches with an over-all length of not less than 36 inches, enclosed in a concrete cylinder at least 4 inches in diameter and 36 inches in depth have been placed at points marked thus o as thereon shown at all angles in the boundaries of the land platted, at all intersections of streets, at points of curvature and points of tangency in street lines, and at the intersections of streets with the boundaries of the plat as shown on said plat.

Clifford H. Spicer  
Clifford H. Spicer-Registered Land Surveyor

### DEDICATION

KNOW ALL MEN BY THESE PRESENTS, That We, Ed Shields and Aurelia Shields, his wife, as proprietors, have caused the land embraced in the annexed plat to be surveyed, laid out and platted to be known as SHIELDS PLAT, A Part Of N. 1/2 Of N.E. 1/4 Of S.W. 1/4, Section 16, T.12 N.-R.4 E., Saginaw Township, Saginaw County, Michigan, and that the street, road and court as shown on said plat dedicated to the use of the public.

Signed and Sealed in the Presence of  
Walter Shields  
Walter Shields  
C.H. Spicer  
C.H. Spicer

Ed Shields (L.S.)  
Ed Shields  
Aurelia Shields (L.S.)  
Aurelia Shields

### ACKNOWLEDGMENT

STATE OF MICHIGAN) ss.  
County of Saginaw)

On this 17<sup>th</sup> day of November 1955, before me, a Notary Public, in and for said County, personally came the above named Ed Shields and Aurelia Shields, his wife, known to me to be the persons who executed the above dedication and acknowledged the same to be their free act and deed.

My Commission Expires May 16, 1958  
Estelle M. Bryan  
Estelle M. Bryan  
Notary Public, Saginaw County, Michigan

COUNTY TREASURER'S CERTIFICATE RELATING TO TAXES  
(Sec. 135, Act 206, 1893 as amended - Sec. 4134, C.L. 1915.)  
Office of County Treasurer, Saginaw County

I hereby certify, that there are no tax liens or titles held by the State on the land described hereon, and that there are no tax liens or titles held by individuals on said lands, for the five years preceding the 3<sup>rd</sup> day of January 1956, and that the taxes for said period of five years are all paid, as shown by the records of this office.

This certificate does not apply to taxes, if any, now in process of collection by township, city or village collecting officers.

Carl O. Little  
Carl O. Little  
County Treasurer

### CERTIFICATE OF APPROVAL BY CITY PLANNING COMMISSION

This plat was approved by the City Planning Commission of the City of Saginaw, Michigan, at a meeting held on the 22<sup>nd</sup> day of November 1955.

Russel O. Koenig  
Russel O. Koenig  
Director

### CERTIFICATE OF MUNICIPAL APPROVAL

This plat was approved by the Township Board of the Township of Saginaw at a meeting held on the 3 day of Jan 1956.

Walter Dietzel  
Walter Dietzel  
Clerk

COPY  
Register's Office  
Saginaw County  
Plat of Shields Plat  
Saginaw Township  
was Recorded this 30 day of Jan A.D., 1956 at 9 o'clock A.M. in Liber 9 of Plats  
Page 43  
Clara P. Turek  
Register of Deeds

I hereby certify this copy is a true copy of map or plat forwarded to the Register of Deeds for recording.  
Date January 26, 1956  
Filed by Auditor General's Dept.  
Date January 31, 1956  
Examined and approved  
Date January 26, 1956  
Violet Argonstein  
Auditor General  
W.L. MacEwen  
Plat Engineer

### CERTIFICATE OF APPROVAL BY THE COUNTY PLAT BOARD

This plat was approved by the County Plat Board of Saginaw County, Michigan, this 5<sup>th</sup> day of January 1956.

Clara P. Turek  
Clara P. Turek, Register of Deeds-Chairman  
Peter Girard  
Peter Girard Auditor  
George Cavanaugh  
George Cavanaugh Auditor  
William A. Case  
William A. Case Auditor

### CERTIFICATE OF APPROVAL BY BOARD OF COUNTY ROAD COMMISSIONERS

This plat has been examined and was approved on the 17<sup>th</sup> day of December 1955 by the Saginaw County Board of Road Commissioners.

The Board of County Road Commissioners of Saginaw County, Michigan, assume no responsibility for the improvement or maintenance of the Roads or Streets shown on this plat until such time as the following conditions have been met and approved by this Board.

All Roads and Streets are to be graded and drained with necessary drainage structures installed and a roadway surface, which shall consist of crushed stone or natural gravel conforming to Michigan State Highway Department Specifications 21A. The surface shall have a minimum width of 18 feet and a compacted thickness of 6 inches. When crushed stone is used the top 2 inches shall be 21A with screenings added to provide a dense wearing course.

Albert M. Wille  
Albert M. Wille  
Chairman  
William M. Trim  
William M. Trim  
Member  
Frank Dudewicz  
Frank Dudewicz  
Member