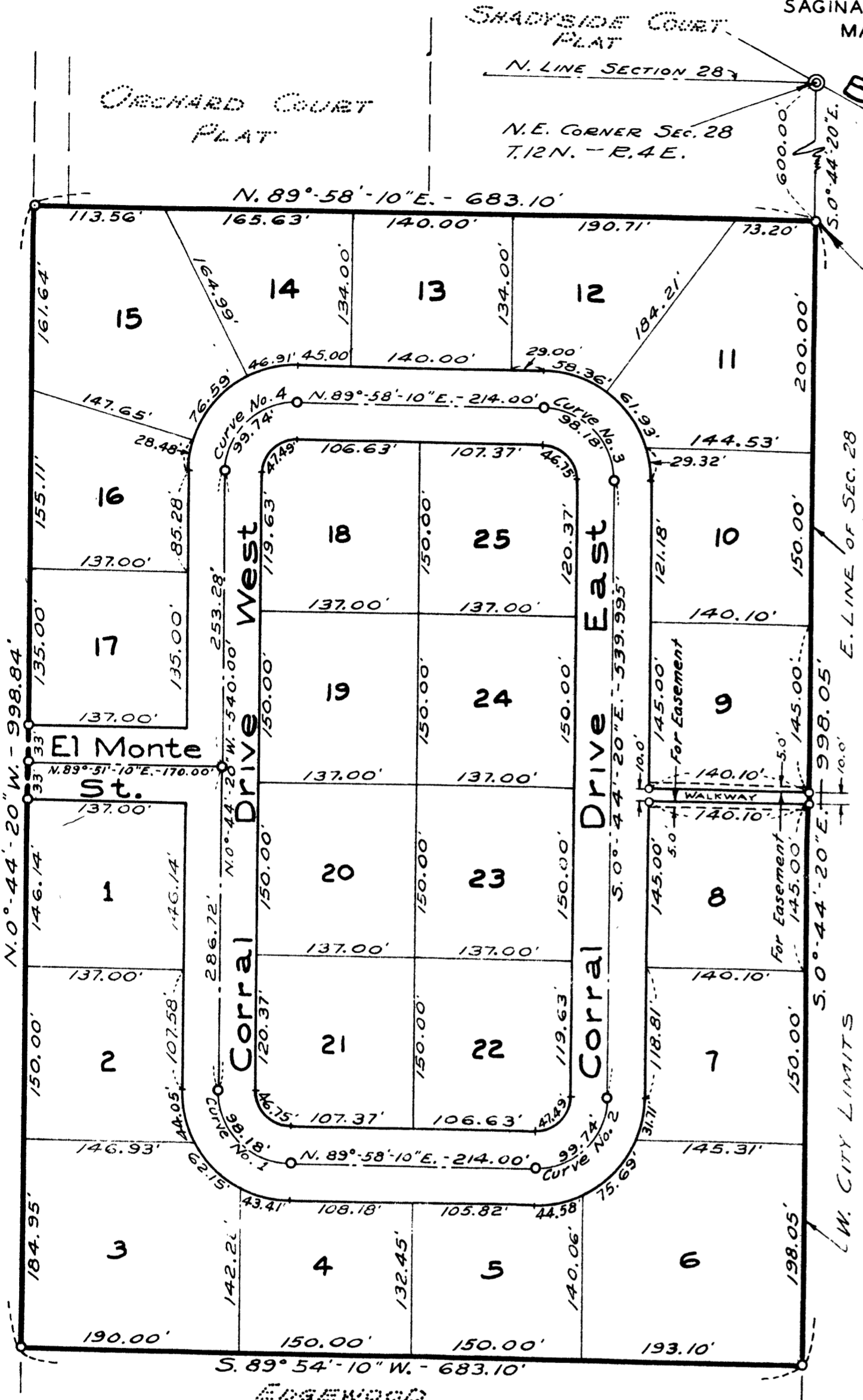


# The Corral

## A PART OF N.E. 1/4 OF SECTION 28, T.12N.-R.4E. SAGINAW TOWNSHIP - SAGINAW COUNTY - MICHIGAN

SCALE: 1 INCH = 100 FEET  
 0 50 100 200 300 400  
 ALL DIMENSIONS ARE GIVEN IN FEET AND DECIMALS THEREOF  
 THE SPICER ENGINEERING COMPANY  
 SAGINAW, MICHIGAN  
 MAY, 1953



**DESCRIPTION**

The land embraced in the annexed plat of THE CORRAL, A Part Of N.E. 1/4 Of Section 28, T.12 N.-R.4 E., Saginaw Township, Saginaw County, Michigan, is described as follows: Commencing at a point on the East line of said Section 28, 600.00 feet S.00°-44'-20\"E., along said line from the Northeast corner of said Section; thence continuing S.00°-44'-20\"E., on the East line of Section 28, 998.05 feet; thence S.89°-54'-10\"W., 683.10 feet; thence N.00°-44'-20\"W., 998.84 feet; thence N.89°-58'-10\"E., along the South line of Orchard Court Plat and Shadyside Court Plat, 683.10 feet to the point of beginning.

**SURVEYOR'S CERTIFICATE**

I hereby certify that the plat hereon delineated is a correct one and that permanent metal monuments consisting of bars not less than one-half inch in diameter and 48 inches in length, or shorter bars of not less than one-half inch in diameter lapped over each other at least 6 inches with an over-all length of not less than 48 inches, encased in a concrete cylinder at least 4 inches in diameter and 48 inches in depth have been placed at points marked thus o as thereon shown at all angles in the boundaries of the land platted, at all intersections of streets and walkway, at points of curvature and points of tangency in said streets, and at the intersections of streets and walkway with the boundaries of the plat as shown on said plat.

*Clifford H. Spicer*  
 Clifford H. Spicer - Registered Land Surveyor

**DEDICATION**

KNOW ALL MEN BY THESE PRESENTS, That we, William R. Morgan and Betty Morgan, his wife, as proprietors, have caused the land embraced in the annexed plat to be surveyed, laid out and platted to be known as THE CORRAL, A Part Of N.E. 1/4 Of Section 28, T.12 N.-R.4 E., Saginaw Township, Saginaw County, Michigan, and that the street, drives and walkway as shown on said plat are hereby dedicated to the use of the public.

*William R. Morgan* (L.S.)  
 William R. Morgan

Signed and Sealed in the Presence of )  
 Elmer Spaedt  
 Otto Schiesswohl

*Betty Morgan* (L.S.)  
 Betty Morgan

**ACKNOWLEDGMENT**

STATE OF MICHIGAN) ss.  
 County of Saginaw)

On this 5th day of June 1953, before me, a Notary Public in and for said county, personally came the above named William R. Morgan and Betty Morgan, his wife, known to me to be the persons who executed the above dedication and acknowledged the same to be their free act and deed.

*Estelle M. Bryan*  
 Estelle M. Bryan  
 Notary Public, Saginaw County, Michigan

My Commission Expires May 16, 1954

**CERTIFICATE OF MUNICIPAL APPROVAL**

This plat was approved by the Township Board of the Township of Saginaw at a meeting held June 30, 1953.  
 (Date)

*Meldron W. McLean*  
 Meldron W. McLean Clerk

**CERTIFICATE OF APPROVAL BY THE COUNTY PLAT BOARD**

This plat was approved by the County Plat Board of Saginaw County, Michigan, this 14th day of July 1953.

*Clara P. Turek*  
 Clara P. Turek, Register of Deeds-Chairman

*Peter Girard* Auditor  
*George Cavanaugh* Auditor  
*Charles E. Tatro, Jr.* Auditor

**COUNTY TREASURER'S CERTIFICATE RELATING TO TAXES**  
 (Sec. 135, Act 206, 1893, as amended - Sec. 4134, C. L. 1915.)  
 Office of County Treasurer, Saginaw County

I hereby certify, that there are no tax liens or titles held by the State on the lands described hereon, and that there are no tax liens or titles held by individuals on said lands for the five years preceding the 10th day of June 1953 and that the taxes for said period of five years are all paid, as shown by the records of this office.

This certificate does not apply to taxes, if any, now in process of collection by Township, City or Village collecting officers.

*Carl O. Little*  
 Carl O. Little County Treasurer

July 17, 1953  
 July 23, 1953  
 July 17, 1953

**CENTERLINE CURVE DATA**

CURVE NO.	DELTA Δ	RADIUS	TANGENT	ARC
1 AND 3	89°-17'-30"	63.00'	62.23'	98.18'
2 AND 4	90°-42'-30"	63.00'	63.78'	99.74'

**CERTIFICATE OF APPROVAL BY CITY PLANNING COMMISSION**

This plat was approved by the City Planning Commission of the City of Saginaw, Michigan, at a meeting held May 26, 1953.

*Russel O. Koenig*  
 Russel O. Koenig Director

**CERTIFICATE OF APPROVAL BY BOARD OF COUNTY ROAD COMMISSIONERS**

This plat has been examined and was approved on the 7th day of July 1953, by the Saginaw County Board of Road Commissioners.

The Board of Road Commissioners of Saginaw, Michigan, assumes no responsibility for the improvement or maintenance of the streets and roads shown on this plat until such time as they have been graded and drained with the necessary drainage structures installed and a gravel, slag, or cinder surface having a compacted thickness of at least 6 inches and a width of at least 18 feet has been applied and approved by this board.

*Frank Dudewicz*  
 Frank Dudewicz Chairman

*Walter F. Graebner*  
 Walter F. Graebner Member

*William M. Trimm*  
 William M. Trimm Member

Register's Office } ss.  
 Saginaw County, }

Plat of The Corral  
 Saginaw Township

was Recorded this 21 day of July A.D. 1953 at 8 O'clock  
A.M. in Liber 7 of Plats

on Page 32

*Clara P. Turek*  
 Clara P. Turek Register of Deeds

ORIGINAL ON FILE