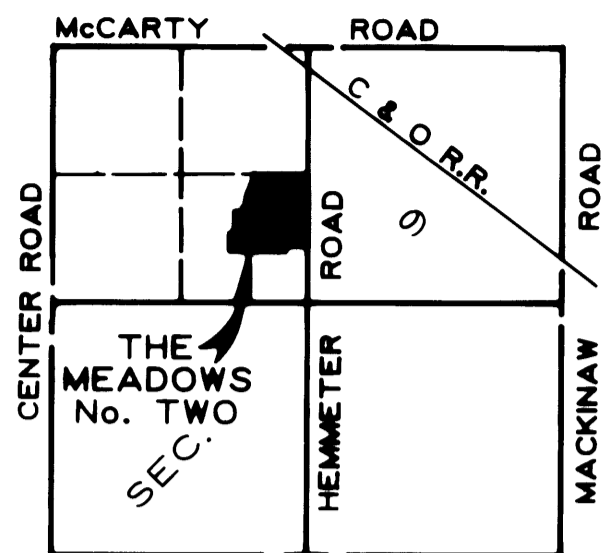
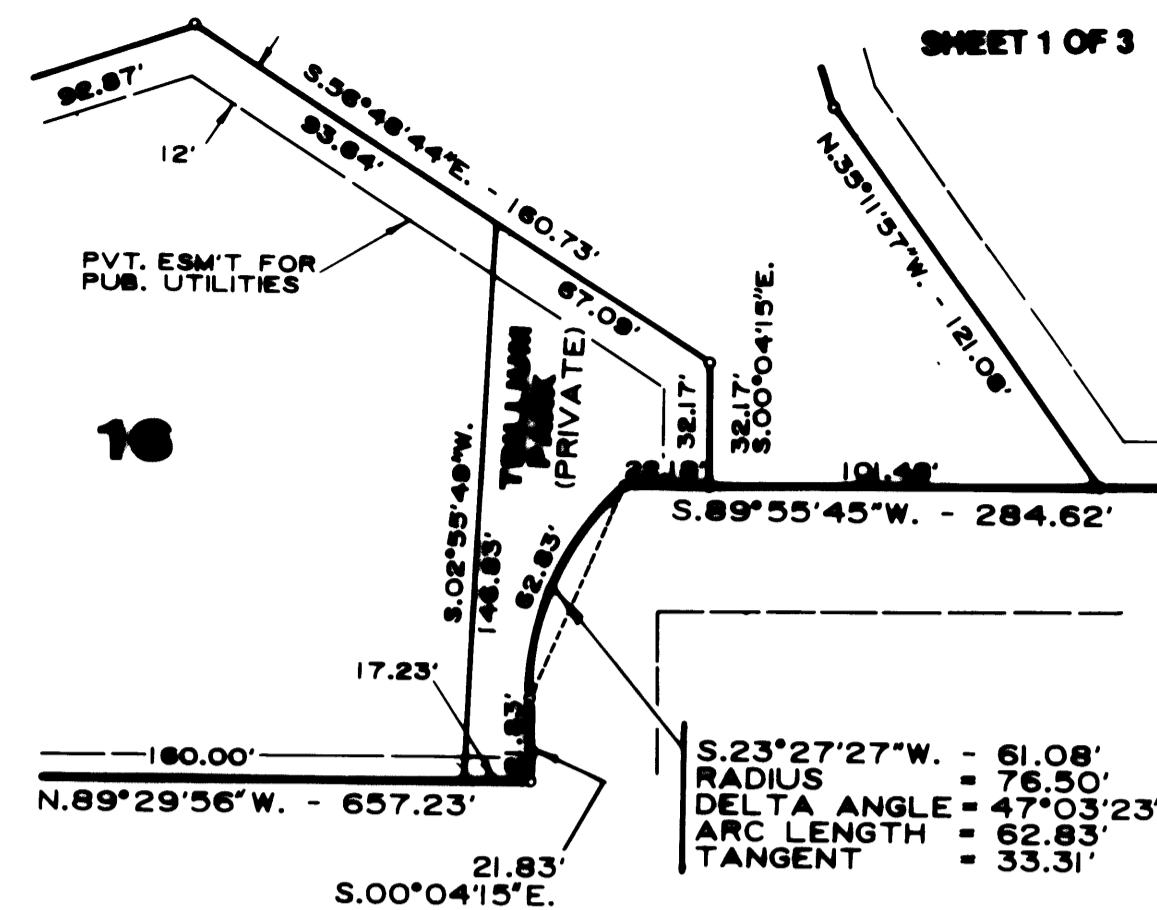


THE MEADOWS No. TWO

PART OF THE NORTHWEST 1/4 OF SECTION 9,
T.12N.-R.4E., SAGINAW TOWNSHIP,
SAGINAW COUNTY, MICHIGAN

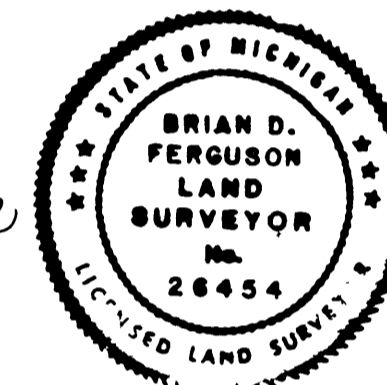


VICINITY MAP
NO SCALE



DETAIL "A"

SCALE: 1" = 50'



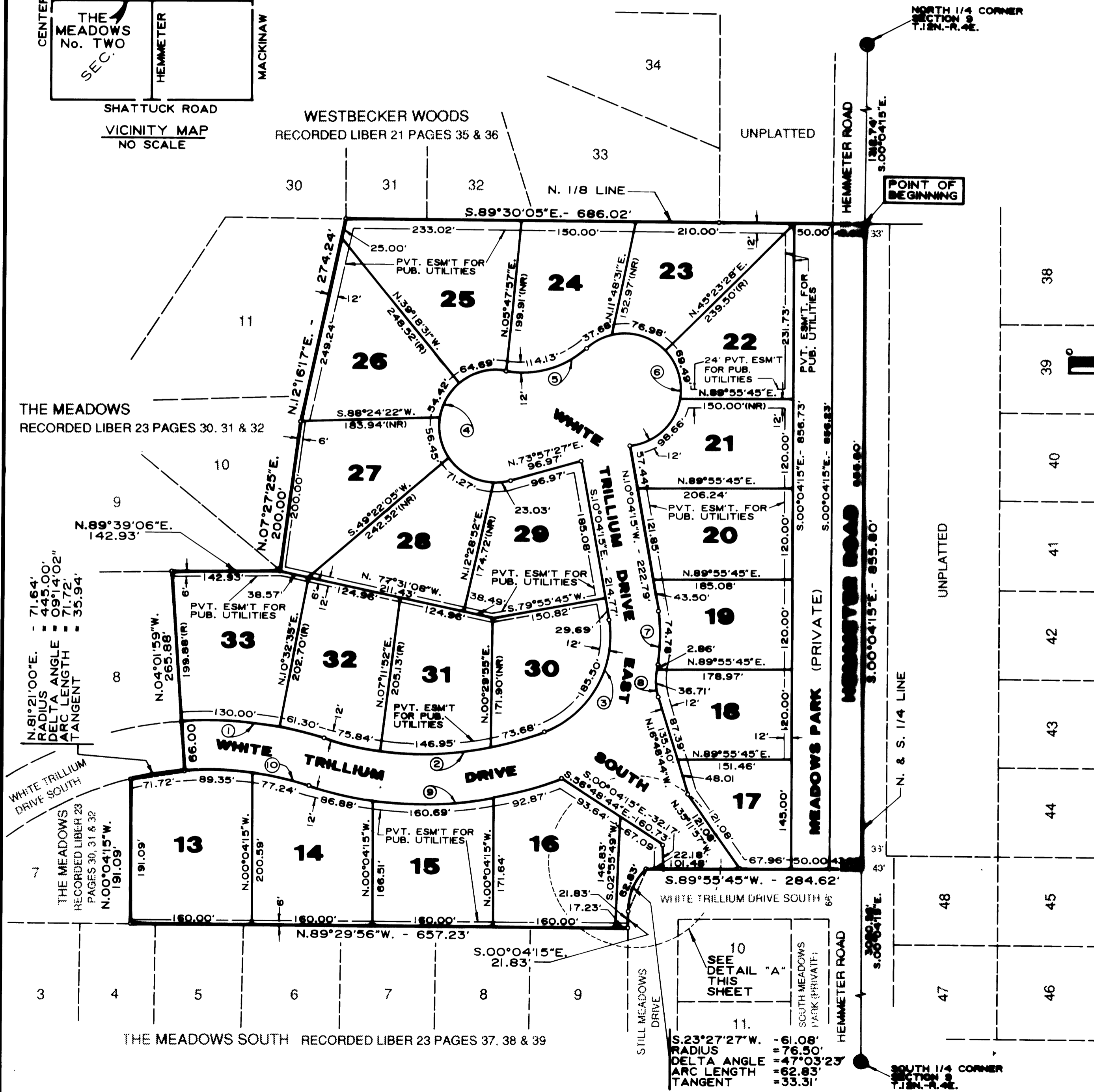
Brian D. Ferguson
BRIAN D. FERGUSON
L.I.S. No. 26454

LEGEND

- ALL DIMENSIONS ARE GIVEN IN FEET
- MONUMENTS, CONSISTING OF IRON RODS ONE HALF INCH IN DIAMETER AND 36 INCHES IN LENGTH WITH CAP NO. 26454, ENCASED IN CONCRETE CYLINDERS 4 INCHES IN DIAMETER AND 36 INCHES IN LENGTH, HAVE BEEN PLACED AT ALL POINTS SHOWN BY SYMBOL "O"
- SET ONE HALF INCH IRON ROD, 18 INCHES IN LENGTH WITH CAP NO. 26454, AT ALL PROPERTY CORNERS
- ALL CURVILINEAR MEASUREMENTS ARE ARC DISTANCES.
- (R) INDICATES RADIAL LINE.
- (NR) INDICATES NON-RADIAL LINE.
- BEARINGS WERE DERIVED FROM WESTBECKER WOODS, RECORDED IN LIBER 21, PAGES 35 AND 36.
- Ⓢ INDICATES CURVE NUMBER.

CURVE DATA

CURVE NO.	ARC	DELTA ANGLE	RADIUS	CHORD	BEARINGS
1	181.30'	21°28'58"	511.00'	180.18'	S.89°18'30"W.
2	286.47'	38°10'17"	445.00'	281.02'	N.89°18'50"E.
3	185.50'	78°18'28"	134.00'	171.04'	N.89°35'13"E.
4	288.88'	206°08'23"	75.00'	146.11'	N.02°57'31"W.
5	114.13'	58°18'45"	185.00'	110.80'	N.73°57'27"E.
6	282.81'	216°02'33"	75.00'	142.64'	S.24°10'36"E.
7	74.78'	21°25'27"	200.00'	74.35'	S.00°36'28"W.
8	39.57'	26°08'56"	80.50'	39.18'	S.02°43'46"E.
9	340.44'	38°10'17"	511.00'	334.18'	S.89°18'50"W.
10	186.58'	21°28'58"	445.00'	185.02'	N.89°18'30"W.



SEE
DETAIL "A"
THIS
SHEET

S.23°27'27"W. - 61.08'
RADIUS = 76.50'
DELTA ANGLE = 47°03'23"
ARC LENGTH = 62.83'
TANGENT = 33.31'

SOUTH 1/4 CORNER
SECTION 9
T.12N.-R.4E.

SILVERWOOD SUBDIVISION RECORDED LIBER 19 PAGES 26 & 27