

TIMOTHY ACRES

A PART OF SECTIONS 12 AND 13, T.12N.-R.3E.

SAGINAW TOWNSHIP, SAGINAW COUNTY, MICHIGAN

SCALE: 1 INCH = 100 FEET

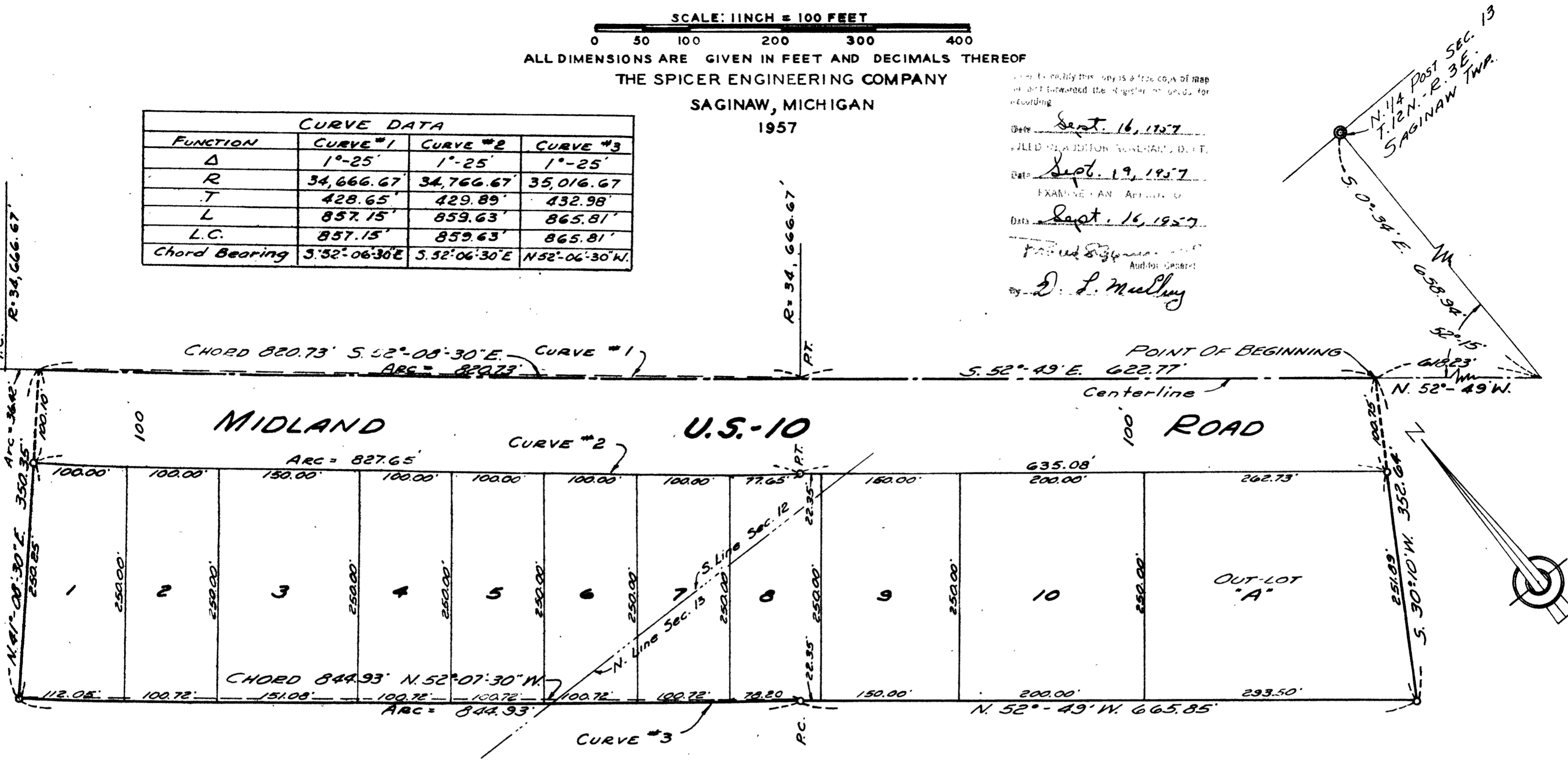
ALL DIMENSIONS ARE GIVEN IN FEET AND DECIMALS THEREOF

THE SPICER ENGINEERING COMPANY
SAGINAW, MICHIGAN
1957

CURVE DATA			
FUNCTION	CURVE #1	CURVE #2	CURVE #3
Δ	1°-25'	1°-25'	1°-25'
R	34,666.67	34,766.67	35,016.67
T	428.65'	429.89'	432.98'
L	857.15'	859.63'	865.81'
L.C.	857.15'	859.63'	865.81'
Chord Bearing	S.52°-06'-30"E	S.52°-06'-30"E	N.52°-06'-30"W

This is to certify that this is a true copy of Map of and intended to be filed in the Public Records for recording.

Date Sept. 16, 1957
FILED WITH JUDICIAL RECORDS, D. C. T.
Date Sept. 19, 1957
EXAMINE AND APPROVE
Date Sept. 16, 1957
Notary Public
D. L. Mulvey
Auditor General



DEDICATION

KNOW ALL MEN BY THESE PRESENTS, That we, Verne W. Day and Ruby M. Day, his wife; Robert R. Day and Alice Day, his wife; and Norman F. Kastorf, a single man, as proprietors, have caused the land embraced in the annexed plat to be surveyed, laid out and platted to be known as TIMOTHY ACRES, A Part Of Sections 12 and 13, T.12 N.-R.3 E., Saginaw Township, Saginaw County, Michigan, and that the road as shown on said plat is hereby dedicated to the use of the public.

Verne W. Day (L.S.)
Verne W. Day
Ruby M. Day (L.S.)
Ruby M. Day
Robert R. Day (L.S.)
Robert R. Day
Alice Day (L.S.)
Alice Day
Norman F. Kastorf (L.S.)
Norman F. Kastorf

Signed and Sealed in the Presence of
Donald McRob
Donald McRob
Barbara J. Brown
Barbara J. Brown

ACKNOWLEDGMENT

STATE OF MICHIGAN) ss.
County of Saginaw) On this 6th day of August 1957, before me, a Notary Public, in and for said County, personally came the above named Verne W. Day and Ruby M. Day, his wife; Robert R. Day and Alice Day, his wife and Norman F. Kastorf, a single man, known to me to be the persons who executed the above dedication and acknowledged the same to be their free act and deed.

My Commission Expires Jan. 2, 1960
January 2, 1960

Barbara J. Brown
Barbara J. Brown
Notary Public, Saginaw County, Michigan

DESCRIPTION

The land embraced in the annexed plat of TIMOTHY ACRES, A Part Of Sections 12 and 13, T.12 N.-R.3 E., Saginaw Township, Saginaw County, Michigan, is described as follows: Commencing at the North $\frac{1}{4}$ post of said Section 13; thence S.00°-34'E., along the North and South $\frac{1}{4}$ line of said Section 13, 658.94 feet to the centerline of Highway U.S.-10; thence N.52°-49'W., along said centerline 618.23 feet to the point of beginning for this description; thence S.30°-10'W., 352.64 feet; thence N.52°-49'W., 665.85 feet to the point of curvature of a curve to the right whose radius is 35,016.67 feet; thence Northwestwardly along the arc of said curve 844.93 feet to a point on said curve, (the chord of said arc having a bearing of N.52°-07'-30"W., and a length of 844.93 feet); thence N.41°-08'-30"E., 350.35 feet to a point on the curved centerline of said Highway U.S.-10 whose radius is 34,666.67 feet; thence Southeastwardly along the arc of said curve 820.73 feet to the point of tangency of said curve, (the chord of said arc having a bearing of S.52°-08'-30"E., and a length of 820.73 feet); thence S.52°-49'E., along the centerline of Highway U.S.-10, 622.77 feet to the point of beginning. This plat contains 10 Lots numbered from 1 to 10 inclusive and one Outlot designated as Outlot "A".

SURVEYOR'S CERTIFICATE

I hereby certify that the plat herein delineated is a correct one and that permanent metal monuments consisting of bars not less than one-half inch in diameter and 36 inches in length, or shorter bars of not less than one-half inch in diameter lapped over each other at least 6 inches with an over-all length of not less than 36 inches, encased in a concrete cylinder at least 4 inches in diameter and 36 inches in depth have been placed at points marked thus \circ as thereon shown at all angles in the boundaries of the land platted, at all intersections of streets, at points of curvature and points of tangency in street lines, and at the intersections of streets with the boundaries of the plat as shown on said plat.

Clifford H. Spicer
Clifford H. Spicer-Registered Land Surveyor

CERTIFICATE OF APPROVAL BY BOARD OF COUNTY ROAD COMMISSIONERS

This plat has been examined and was approved on the 13th day of August 1957 by the Saginaw County Board of Road Commissioners.

The Board of County Road Commissioners of Saginaw County, Michigan, assume no responsibility for the improvement or maintenance of the Roads or Streets shown on this plat until such time as the following conditions have been met and approved by this Board.

All Roads and Streets are to be graded and drained with necessary drainage structures installed and a roadway surface, which shall consist of crushed stone or natural gravel conforming to Michigan State Highway Department Specifications 21A. The surface shall have a minimum width of 18 feet and a compacted thickness of 6 inches. When crushed stone is used the top 2 inches shall be 21A with screenings added to provide a dense wearing course.

William M. Trim Chairman
Frank Dudewicz Member
Harold H. Bauer Member

COUNTY TREASURER'S CERTIFICATE RELATING TO TAXES
(Sec. 135, Act 206, 1893 as amended - Sec. 4134, C. L. 1915.)
Office of County Treasurer, Saginaw County

I hereby certify, that there are no tax liens or titles held by the State on the land described hereon, and that there are no tax liens or titles held by individuals on said lands, for the five years preceding the 21st day of August 1957, and that the taxes for said period of five years are all paid, as shown by the records.

This certificate does not apply to taxes, if any, now in process of collection by township, city or village collecting officers.

Carl O. Little
County Treasurer

CERTIFICATE OF APPROVAL BY THE COUNTY PLAT BOARD

This plat was approved by the County Plat Board of Saginaw County, Michigan, this 26th day of August 1957.

COPY
Register's Office
Saginaw County, Mich.
Plat of: Timothy Acres
was Recorded this 12 day of Sept. A.D. 1957 at 2:00 o'clock P.M., in Liber 11 of P.L.C.
9

Clara P. Turek
Clara P. Turek, Register of Deeds-Chairman
George Cavannaugh
George Cavannaugh Auditor
William A. Case
William A. Case Auditor
John H. Deibel
John H. Deibel Auditor

CERTIFICATE OF MUNICIPAL APPROVAL

This plat was approved by the Township Board of the Township of Saginaw at a meeting held on the 5th day of August 1957.

APPROVED Sept. 11, 1957
Walter Dietzel
Walter Dietzel Township Clerk

John C. Mackie
JOHN C. MACKIE
STATE HIGHWAY COMMISSIONER
By: *Henry H. Hooper*
Henry H. Hooper
Deputy Highway Commissioner