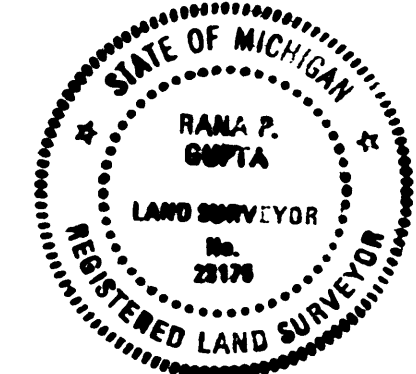
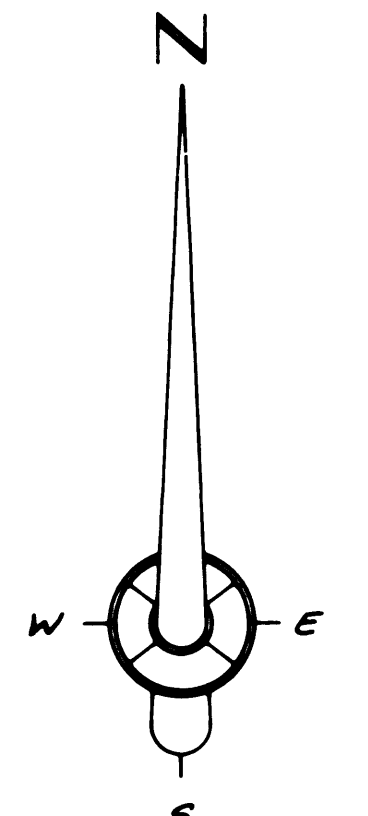
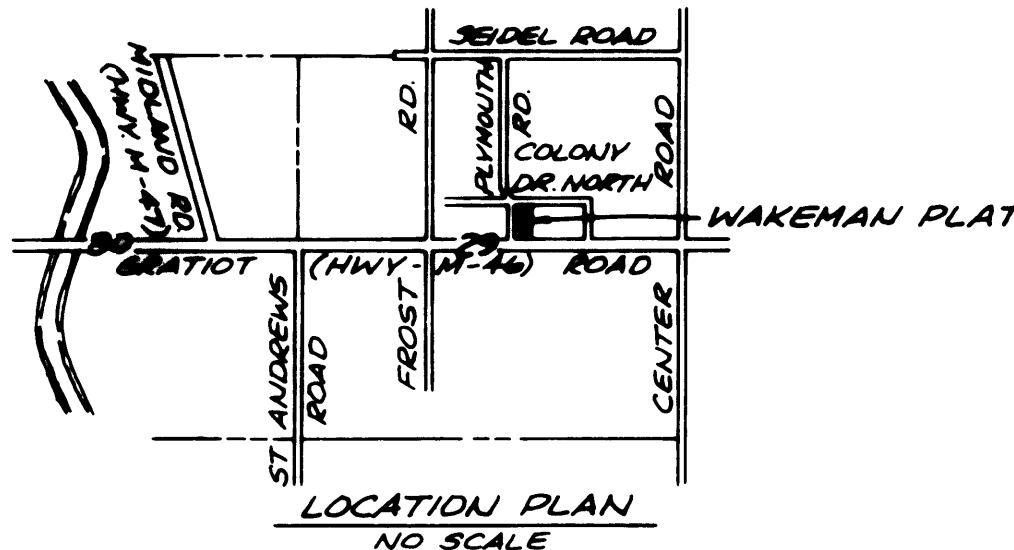
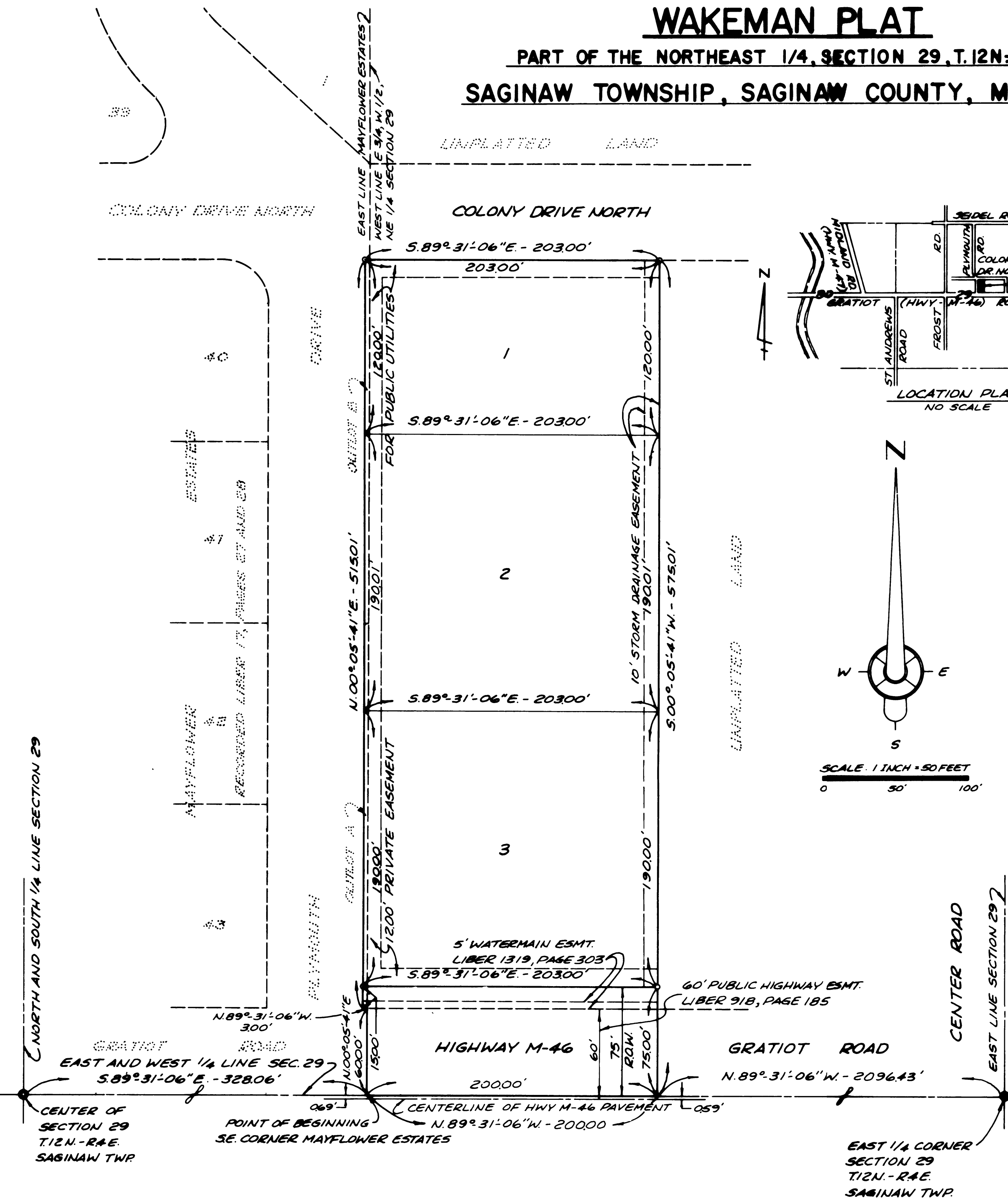


# WAKEMAN PLAT

PART OF THE NORTHEAST 1/4, SECTION 29, T.12N-R.4E.

SAGINAW TOWNSHIP, SAGINAW COUNTY, MICHIGAN



Rana P. Gupta  
RANA P. GUPTA

- LEGEND**
- 1- ALL DIMENSIONS ARE GIVEN IN FEET.
  - 2- CONCRETE MONUMENTS HAVE BEEN PLACED AT ALL POINTS MARKED "o".
  - 3- SET IRON BARS 1/2" IN DIA. BY 18" IN LENGTH AT ALL LOT CORNERS.
  - 4- LOT 3 SHALL HAVE NO VEHICULAR ACCESS FROM HIGHWAY M-46.
  - 5- BEARINGS WERE DERIVED FROM MAYFLOWER ESTATES RECORDED IN LIBER 17, PAGES 27 AND 28.