

Jan 6-1927
J. L. Howell

REGISTER'S OFFICE
SAGINAW COUNTY, MICH.
RECEIVED FOR RECORD THE
7th
January 7
1927
AT 10 O'CLOCK A. M. AND
RECORDED IN LIBER 5 OF
Plat ON PAGE 2
E. P. Hesse REGISTER

WESTDALE

PART OF SECTION 28, T 12 N, R 4 E.

SAGINAW TWP, SAGINAW CO, MICHIGAN

SCALE: 1 INCH = 200 FEET

KNOW ALL MEN BY THESE PRESENTS, That we "GOLF AND RECREATION, INC." a Michigan corporation by Frank F. Sommers President and William M. Hill Secretary as proprietor, have caused the land embraced in the annexed plat to be surveyed, laid out and platted to be known as WESTDALE, PART OF SECTION 28, T 12 N, R 4 E, SAGINAW TWP, SAGINAW CO, MICHIGAN and that the streets and alleys as shown on said plat are hereby dedicated to the use of the public excepted that designated as "Private Drive" which is dedicated to the lot owners of Lots 67, 68 & 69.

Signed and Sealed in the presence of
Jessie W. Kennel President
Edna Surubel Secretary

STATE OF MICHIGAN } ss
County of Saginaw }
On this 7 day of DECEMBER, A D 1926 before me
JESSIE W. KENNEL, a Notary Public in and for said
County appeared FRANK F. SOMMERS and WILLIAM M. HILL
... me personally known, who being each by me duly sworn
did say that they are the President and Secretary respectively
of the "GOLF AND RECREATION, INC." a Michigan Corporation, and
that the seal affixed to said instrument is the corporate seal of
said corporation and that said instrument was signed and sealed
in behalf of said corporation by authority of its board of directors
and the said FRANK F. SOMMERS and WILLIAM M. HILL
acknowledged said instrument to be the free act and deed of said
corporation.
My COMMISSION EXPIRES
OCTOBER 13, 1929
Jessie W. Kennel
Notary Public Saginaw County

SURVEYOR'S CERTIFICATE

I hereby certify that the plat hereon delineated is a correct one and that permanent metal monuments of not less than one inch in diameter and fifteen inches in length set in a concrete base at least four inches in diameter and forty eight inches in depth have been placed at points marked thus • as thereon shown at all angles in the boundaries of the land platted, at all the intersections of streets, intersections of alleys, or of streets and alleys, and at the intersections of streets and alleys with the boundaries of the plat as shown on said plat.
H. W. Bingham
Registered Civil Engineer

CERTIFICATE OF MUNICIPAL APPROVAL

This plat was approved by the Township Board of the Township of Saginaw at a meeting held DECEMBER 10, 1926.
Edward J. ...
Clerk

CERTIFICATE OF APPROVAL BY THE BOARD OF COUNTY AUDITORS

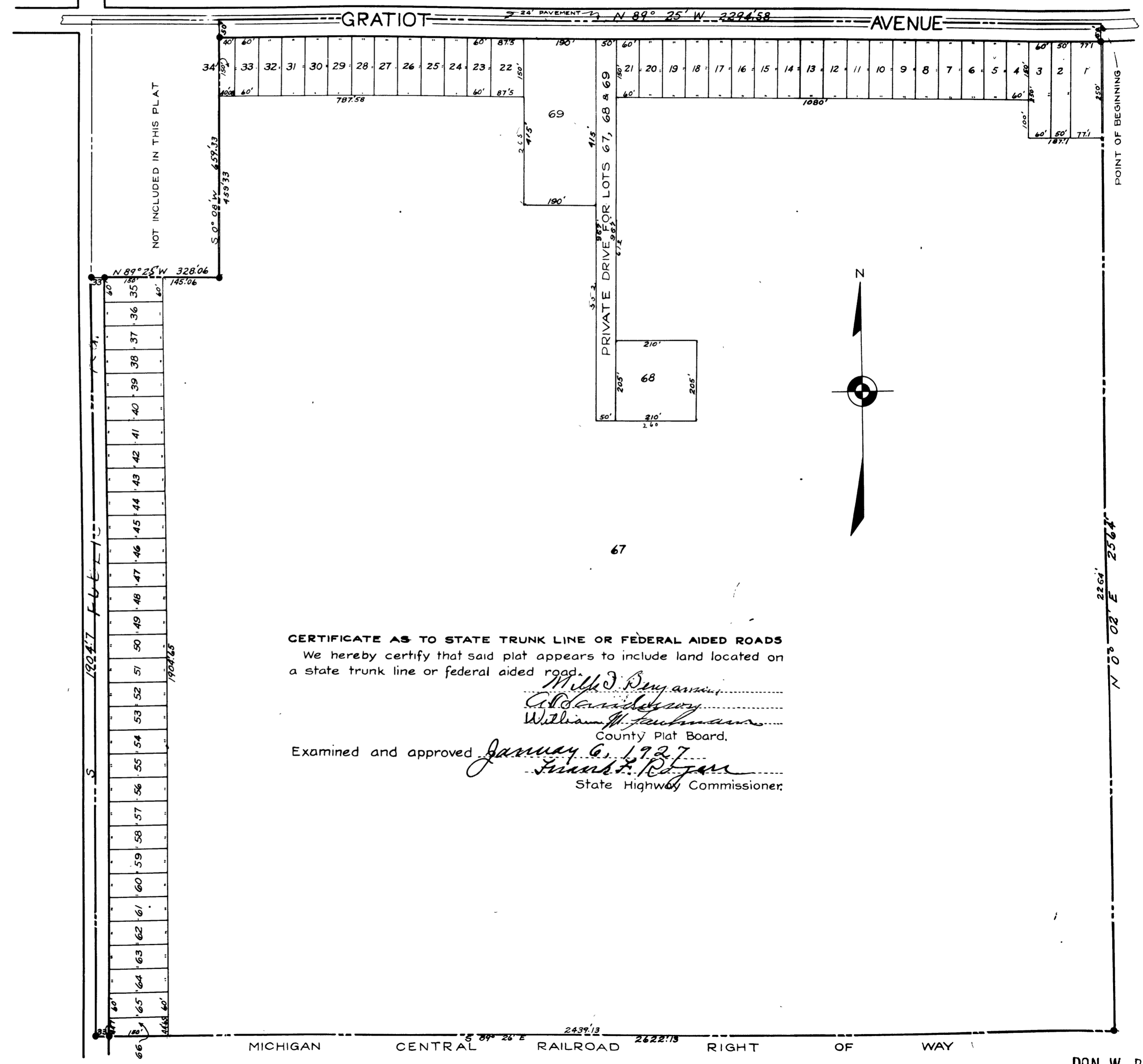
Approved by the Board of County Auditors of Saginaw County, Michigan, this 30th day of DECEMBER, 1926.
William J. ...
Chairman
William M. ...
A. J. ...

COUNTY TREASURER'S CERTIFICATE RELATING TO TAXES

Office of the County Treasurer, Saginaw County. #2963 Copy
I hereby certify, That that there are No. tax liens or titles held by the State on the lands described below, and that there are No. tax liens or titles held by individuals on said lands, for the five years preceding the 7 day of December 1926 and that the taxes for said period of five years are paid, as shown by the records of this office.

This certificate does not apply to taxes, if any, now in process of collection by township, city or village collecting officers

DESCRIPTION OF LAND PLATTED
A parcel of land in the S.W. 1/4 of Section 28, T12N, R4E more particularly described as follows: Beginning at the N.E. corner of the S.W. 1/4 of said Section 28, T12N, R4E running thence N 89° 25' W, 2294.58 feet; thence S 0° 08' W, 659.33 feet; thence N 89° 25' W, 328.06 feet; thence South, 1904.7 feet; thence S 89° 26' E, 2622.13 feet; thence N 0° 02' E, 2564 feet to the point of beginning.
N. G. Patterson
County Treasurer.



CERTIFICATE AS TO STATE TRUNK LINE OR FEDERAL AIDED ROADS
We hereby certify that said plat appears to include land located on a state trunk line or federal aided road.
William J. ...
County Plat Board.
Examined and approved January 6, 1927
Frank F. ...
State Highway Commissioner.

DON W. BINGHAM
CIVIL and SANITARY ENGINEER
1415 WOODCROFT AVE.
PHONE 8594 FLINT, MICH.