

WESTWOOD PARK

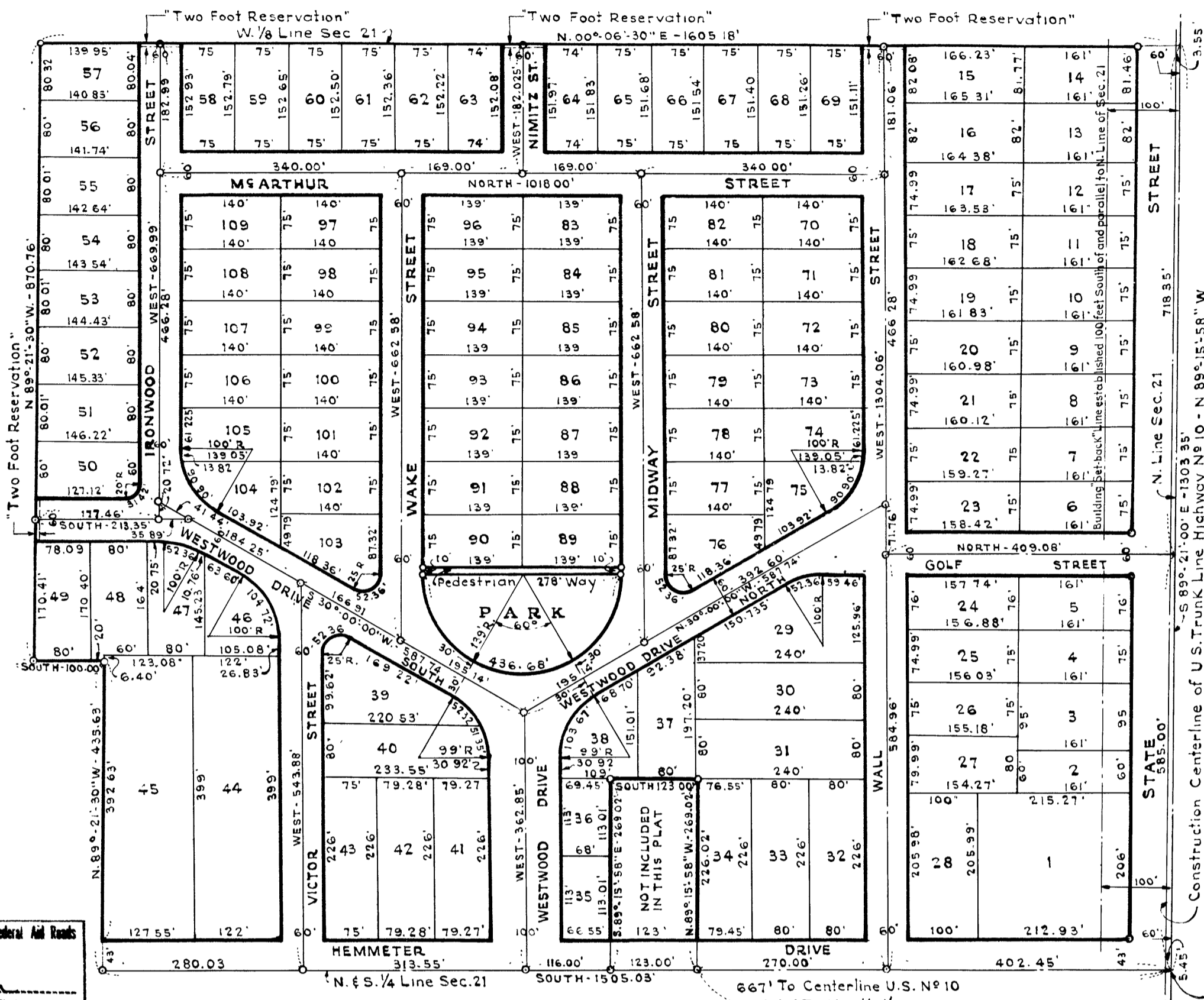
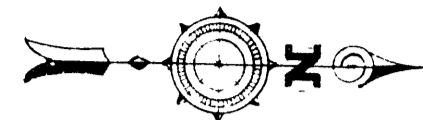
SECTION TWENTY-ONE - TOWNSHIP TWELVE NORTH - RANGE FOUR EAST

SAGINAW TOWNSHIP - SAGINAW COUNTY - MICHIGAN

SCALE: 1 INCH = 160 FEET

All dimensions are given in feet and decimals thereof.

THE FRANCIS ENGINEERING COMPANY
SAGINAW - MICHIGAN



Finding that width and location of State Trunk Line and Federal Aid Roads conform to plans on file, I hereby approve this plat.
Charles M. Ziegler
Charles M. Ziegler
State Highway Commissioner.

DEDICATION

KNOW ALL MEN BY THESE PRESENTS, That I, George W. Francis trustee as proprietor have caused the land embraced in the annexed plat to be surveyed, laid out and platted, to be known as Westwood Park, SECTION TWENTY-ONE, TOWNSHIP TWELVE NORTH, RANGE FOUR EAST, SAGINAW TOWNSHIP, SAGINAW COUNTY, MICHIGAN and that the streets, pedestrian way, and park as shown on said plat are hereby dedicated to the use of the public, however, excepting from this dedication any lands designated "Two Foot Reservation", such lands to be deemed to be dedicated automatically at such time as street extensions adjacent thereto are dedicated in adjoining property.

Signed and Sealed in Presence of
C.H. Spicer C.H. Spicer } *George W. Francis* George W. Francis - Trustee.
H.P. Dodge H.P. Dodge }

STATE OF MICHIGAN } ss.
County of Saginaw }
On this 2nd day of March, A.D. 1943, before me, *Janice Gerke* a Notary Public in and for said county appeared *George W. Francis* to me personally known, who being by me duly sworn did say that he is the Trustee for the proprietors of the land embraced in the annexed plat by virtue of an agreement recorded on the 24th day of February, A.D. 1943, in Liber 657, pages 21-107, incl., Register of Deeds Office, Saginaw County, Saginaw, Michigan, granting full power and authority to cause said property to be platted and that said instrument was signed in behalf of said proprietors and the said *George W. Francis* acknowledged said instrument to be his free act and deed as such Trustee.
Janice Gerke Janice Gerke
Notary Public Saginaw County.

My Commission expires... *May 11, 1945*

SURVEYOR'S CERTIFICATE

I hereby certify that the plat hereon delineated is a correct one and that permanent metal monuments consisting of bars not less than one-half inch in diameter and 48 inches in length, or shorter bars of not less than one-half inch in diameter lapped over each other at least 6 inches with an over-all length of not less than 48 inches, encased in a concrete cylinder at least 4 inches in diameter and 48 inches in depth have been placed at points marked thus \odot as thereon shown at all angles in the boundaries of the land platted, at all intersections of streets, intersections of streets and pedestrian ways and at the intersections of streets with the boundaries of the plat as shown on said plat.

G.W. Francis G.W. Francis
Registered Land Surveyor And Registered Professional Engineer.

CERTIFICATE OF MUNICIPAL APPROVAL (TOWNSHIP)

This plat was approved by the Township Board of the Township of Saginaw at a meeting held *October 7, 1942*.

CERTIFICATE OF MUNICIPAL APPROVAL (CITY OF SAGINAW PLANNING COMMISSION)

This plat was approved by the City Planning Commission of the City of Saginaw at a meeting held *August 27, 1942*.

CERTIFICATE OF MUNICIPAL APPROVAL (CITY OF SAGINAW)

This plat was approved by the Common Council of the City of Saginaw at a meeting held *January 11, 1943*.

CERTIFICATE OF APPROVAL BY BOARD OF COUNTY ROAD COMMISSIONERS

This plat has been examined and was approved on the *13th* day of *October*, 1942 by the Saginaw County Board of Road Commissioners but in so doing said Board does not accept any responsibility for the construction, maintenance, or drainage of the roads shown within the confines of the plat.
Charles Gottschalk Charles Gottschalk - Chairman.
Arthur Reinbold Arthur Reinbold - Member
George E. Ward George E. Ward - Member

CERTIFICATE OF APPROVAL BY THE BOARD OF COUNTY AUDITORS

Approved by the Board of County Auditors of Saginaw County, Michigan, this *28th* day of *October*, 1942.
George Cavanaugh George Cavanaugh - Chairman
Fred Swartzmiller Fred Swartzmiller
Albert Kipp Albert Kipp

CERTIFICATE AS TO STATE TRUNK LINE OR FEDERAL AID ROADS

We hereby certify that said plat appears to include land located on a state trunk line or federal aid road.
County Plat Board
George Cavanaugh George Cavanaugh
Fred Swartzmiller Fred Swartzmiller
Albert Kipp Albert Kipp

COUNTY TREASURER'S CERTIFICATE RELATING TO TAXES

(Sec. 135, Act 206, 1893, as amended - Sec. 4134, C.L. 1915)
Office of County Treasurer, Saginaw County.
I hereby certify, That there are *no* tax liens or titles held by the state on the lands described hereon, and that there are *no* tax liens or titles held by individuals on said lands, for the five years preceding the *17th* day of *September*, 1942 and that the taxes for said period of five years are *all* paid, as shown by the records of this office.
This certificate does not apply to taxes, if any, now in process of collection by township, city or village collecting officers.
Carl O. Little Carl O. Little - County Treasurer.

DESCRIPTION

The land embraced in the annexed plat of "Westwood Park, SECTION TWENTY-ONE, TOWNSHIP TWELVE NORTH, RANGE FOUR EAST, SAGINAW TOWNSHIP, SAGINAW COUNTY, MICHIGAN" is described as follows:- Commencing at the North one-quarter corner of Section 21, T.12N.-R.4E. thence South, 1505.03 feet on the N. and S. 1/4 line of said section to a point which is 1115.30 feet North of the center of said section 21, said distance being measured on the N. and S. 1/4 line of said section; thence N.89°-21'-30" W. 435.63 feet on a line parallel to the E. and W. 1/4 line of said section 21; thence South 100 feet on a line parallel to the N. and S. 1/4 line of said section; thence N.89°-21'-30" W. 870.76 feet to a point on the W. 1/8 line of said section 21, which point is 1015.30 feet North of the E. and W. 1/4 line of said section, said distance being measured on the W. 1/8 line of said section; thence N.00°-06'-30" E. 1605.18 feet on the W. 1/8 line of said section 21 to the W. 1/8 corner on the N. line of said section; thence S.89°-21'-00" E. 1303.35 feet on the N. line of said section to the point of beginning, except a parcel of land described as follows:- Commencing at a point on the North and South one-quarter line of Section 21, T.12N.-R.4E. 672.45 feet South of the North one-quarter corner of said section; thence N.89°-15'-58" W. parallel to the centerline of the Highway known as U.S. 10, 269.02 feet, thence South 123 feet on a line parallel to the N. and S. 1/4 line of said section; thence S.89°-15'-58" E. on a line parallel to the centerline of said Highway 269.02 feet to a point on the N. and S. 1/4 line of said section; thence North on the N. and S. 1/4 line of said section 123 feet to the point of beginning.