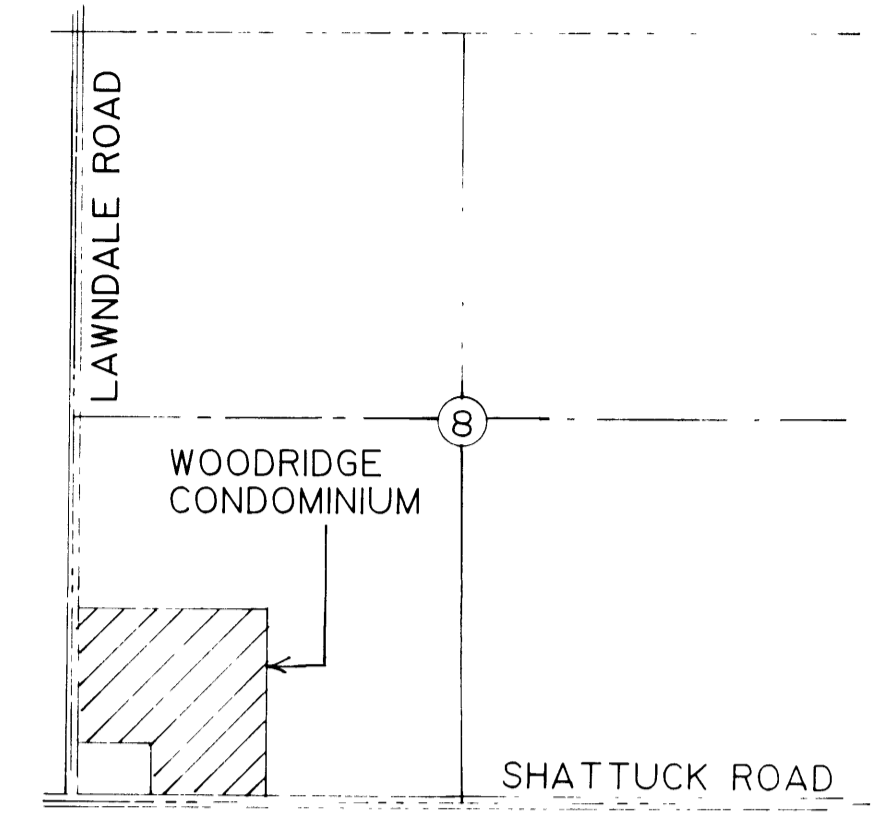


NOTE:  
 UTILITIES AS SHOWN INDICATE APPROXIMATE LOCATIONS OF FACILITIES ONLY, AS DISCLOSED BY THE VARIOUS AGENCIES, AND NO GUARANTEE IS GIVEN TO THE COMPLETENESS OR ACCURACY THEREOF.

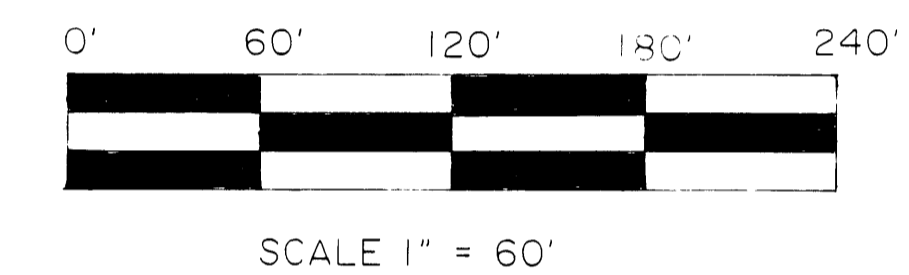
MUST BE BUILT  
 ALL PROPOSED STRUCTURES AND IMPROVEMENTS SHOWN ON THE CURRENT PHASE OF DEVELOPMENT MUST BE BUILT, EXCEPT WHERE INDICATED

BENCHMARK - ELEVATION - 625.20  
 TOP OF HYDRANT AT SOUTHWEST CORNER OF SHATTUCK RD. AND WIENEKE ST.

BEARINGS WERE ESTABLISHED FROM  
 A SPICER ENGINEERING SURVEY,  
 JOB NO. S-8050, A-15328



LOCATION MAP  
 (NO SCALE)



- SET CONCRETE MONUMENT
- CULVERT END SECTION
- 4" DIAMETER WATER LINE
- 4" DIAMETER SANITARY SEWER
- UNDERGROUND ELECTRIC, GAS, TELEPHONE AND TELEVISION LINES
- FIRE HYDRANT
- WATER LINES
- GAS LINES
- SANITARY SEWERS
- STORM SEWERS
- WATER VALVE

WAHL BROTHERS PLAT  
 SECTION 8, T.12 N. - R. 4 E.  
 LIBER 9, PAGE 11

# SURVEY AND UTILITY PLAN WOODRIDGE CONDOMINIUM

UTILITY	SOURCE OF LOCATION
ELECTRICAL, TELEVISION & GAS LINE	CONSUMER POWER COMPANY
TELEPHONE	MICHIGAN BELL
STORM SEWER, SANITARY SEWER, WATER LINES	AYRES ASSOCIATES

AYRES ASSOCIATES  
 1007 E. WACKERLY ROAD  
 MIDLAND, MICHIGAN 48640  
 (517) 839 - 9611  
*Jerry L. Jones*  
 JERRY L. JONES, R.L.S. 19838  
 PROPOSED: 02/02/90  
 AYRES JOB NO. 9396.10

