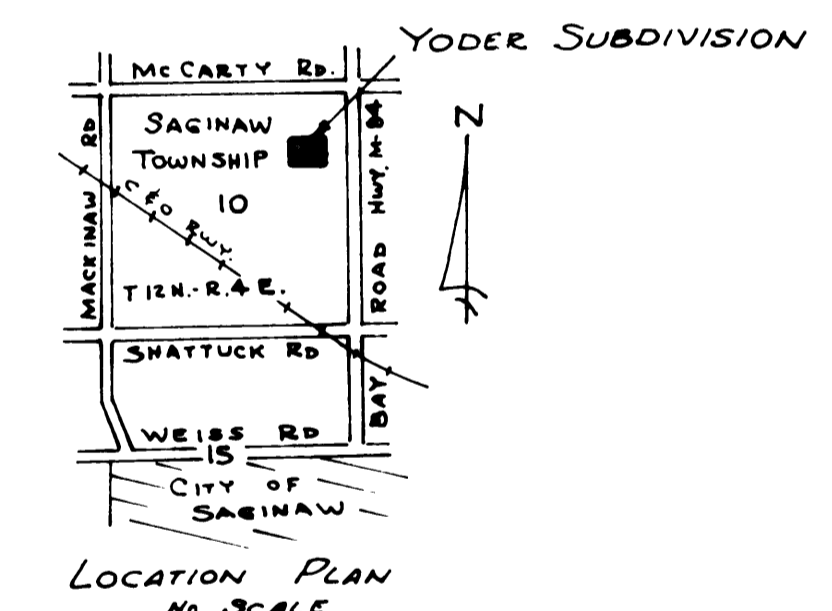
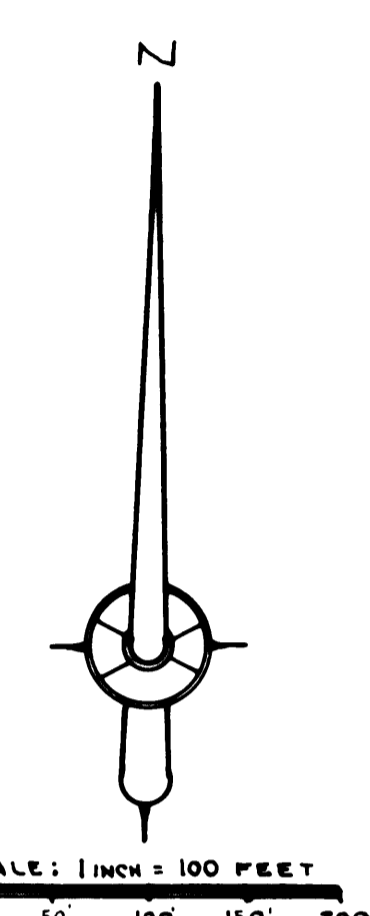
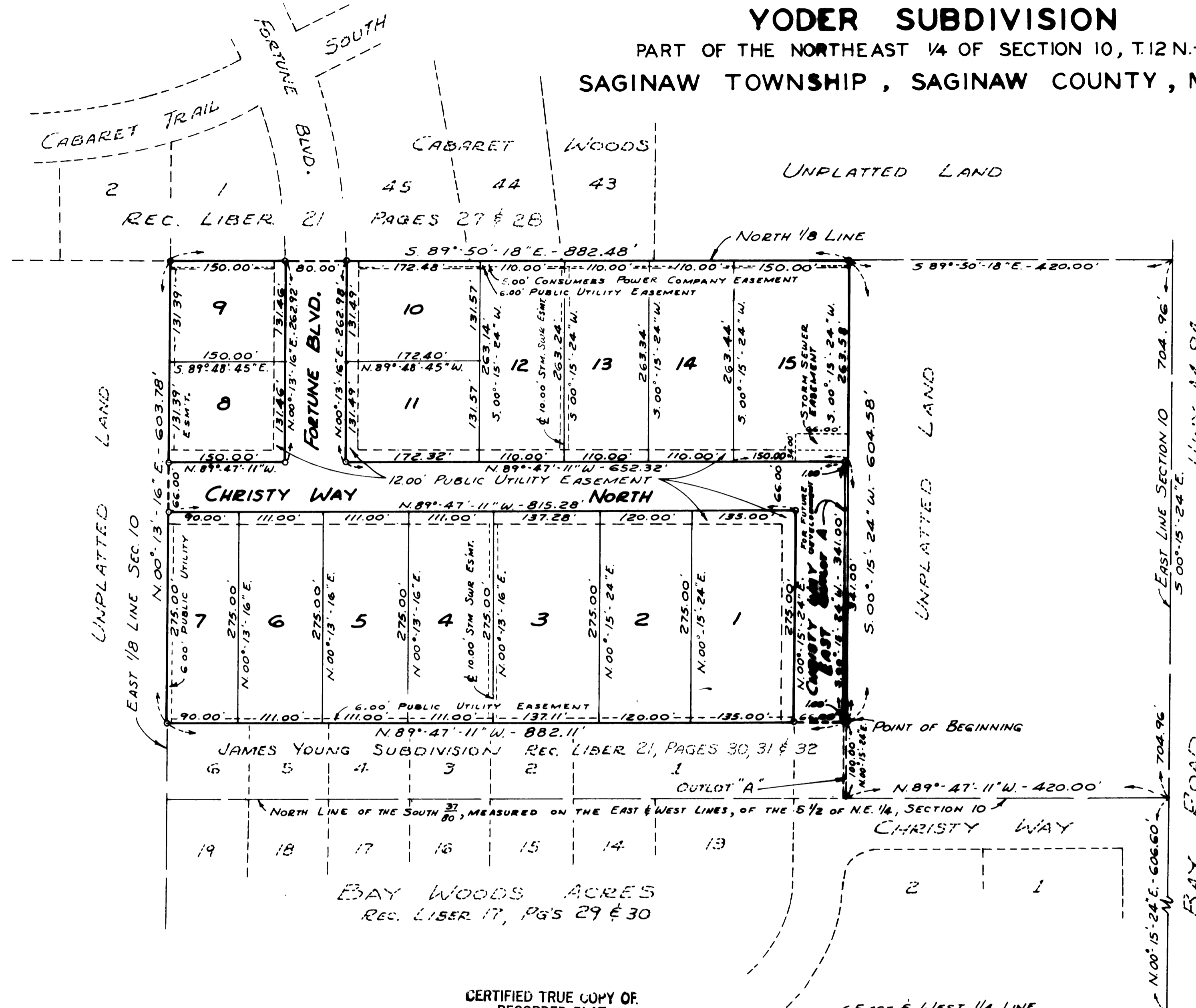


# YODER SUBDIVISION

PART OF THE NORTHEAST 1/4 OF SECTION 10, T.12 N.-R.4 E.  
SAGINAW TOWNSHIP, SAGINAW COUNTY, MICHIGAN



- NOTES:
- 1- ALL DIMENSIONS ARE GIVEN IN FEET
  - 2- CONCRETE MONUMENTS HAVE BEEN PLACED AT ALL POINTS MARKED "O"
  - 3- SET SOLID IRON BARS 1/2" IN DIA. BY 18" IN LENGTH AT ALL LOT CORNERS.
  - 4- BEARINGS WERE DERIVED FROM THE RECORDED PLAT OF BAY WOODS ACRES No. THREE, LIBER 20, PAGES 1 AND 2

CERTIFIED TRUE COPY OF RECORDED PLAT

*Loren E. Monroe*  
LOREN E. MONROE  
STATE TREASURER

By *Richard E. Lomax*  
Richard E. Lomax, Plat Examiner

Date September 29, 1978

EAST 1/4 CORNER  
SECTION 10, T.12 N.-R.4 E.  
SAGINAW TOWNSHIP  
SAGINAW CO., MICHIGAN

